

# Bob and Crystal Rilee Park Trails Inventory and Mapping Project

Quentin Comus  
CPRD GIS Intern  
OSU-Cascades Student

# Project Overview

- ▶ Volunteer Internship through OSU-Cascades
  - ▶ September 21 through December 14
  - ▶ 125 hours of data collection and analysis
- ▶ Deliverables
  - ▶ Internal trail inventory spreadsheet
  - ▶ Internal trail inventory map
  - ▶ External visitor maps
  - ▶ External visitor web application (interactive map)
  - ▶ Signage design and placement recommendations

# Trail Inventory Overview

## ▶ Variables

- ▶ Trail Number
- ▶ Trail Length
- ▶ Tread Width
- ▶ Tread Surface
- ▶ Map Distance
- ▶ Beginning Termini
- ▶ Ending Termini
- ▶ Clearing Height
- ▶ General Class

## ▶ Variables (cont.)

- ▶ Pedestrian Class
- ▶ Bicycle Class
- ▶ Horse Class
- ▶ Average Grade
- ▶ ADA Compliance
  - ▶ 200-foot, 5-8.33% grade
  - ▶ 30-foot, 8.33-10% grade
  - ▶ 10-foot, 10-12% grade
  - ▶ True Grade, <5% grade

# General Class Classification

## ▶ Classes

- ▶ 1: Minimally Developed
- ▶ 2: Moderately Developed
- ▶ 3: Developed
- ▶ 4: Highly Developed
- ▶ 5: Fully Developed

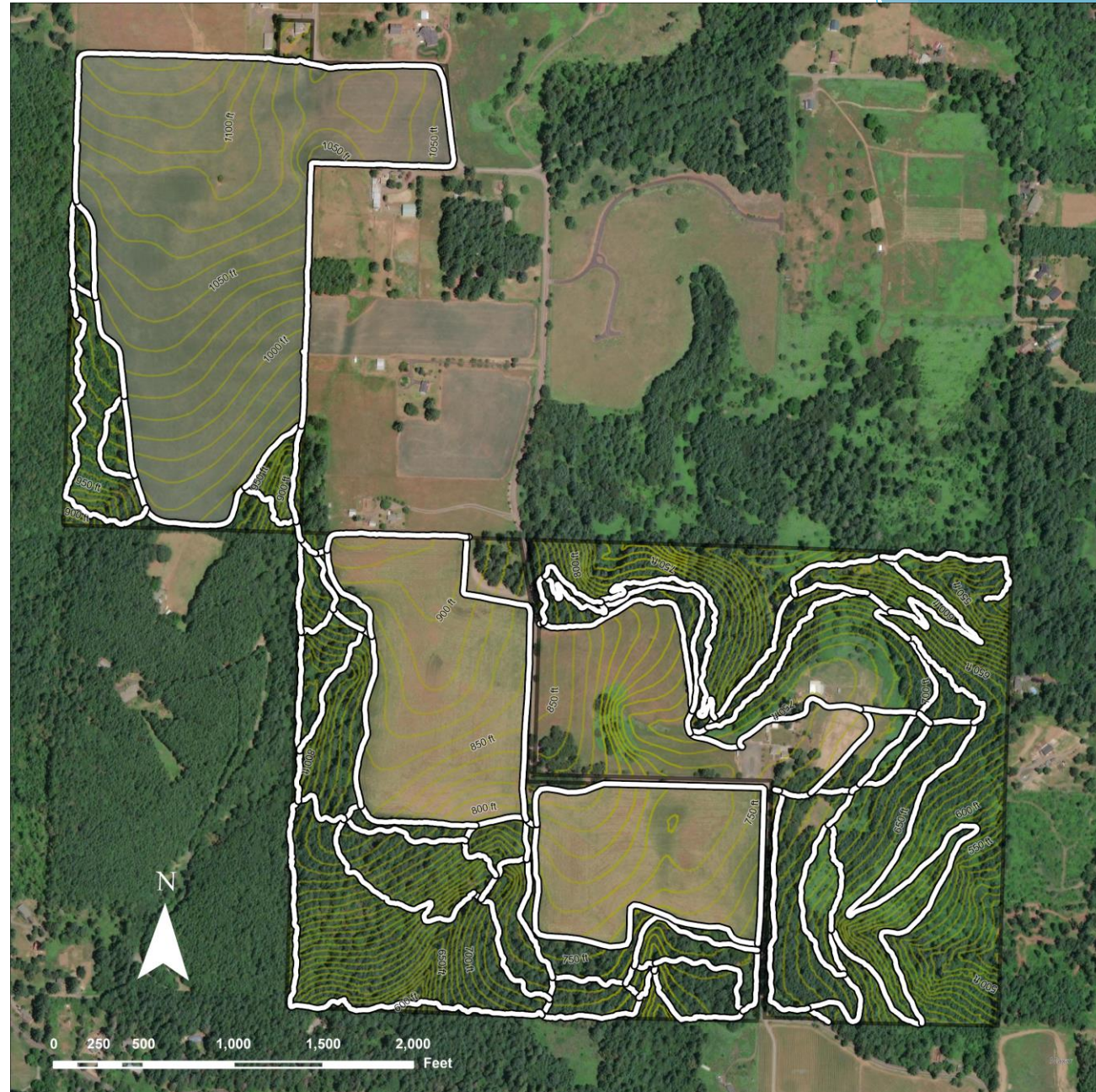
## ▶ Trail Attributes

- ▶ Tread and Traffic Flow
- ▶ Obstacles
- ▶ Constructed Features and Trail Elements
- ▶ Signs
- ▶ Typical Recreation Environments and Experiences

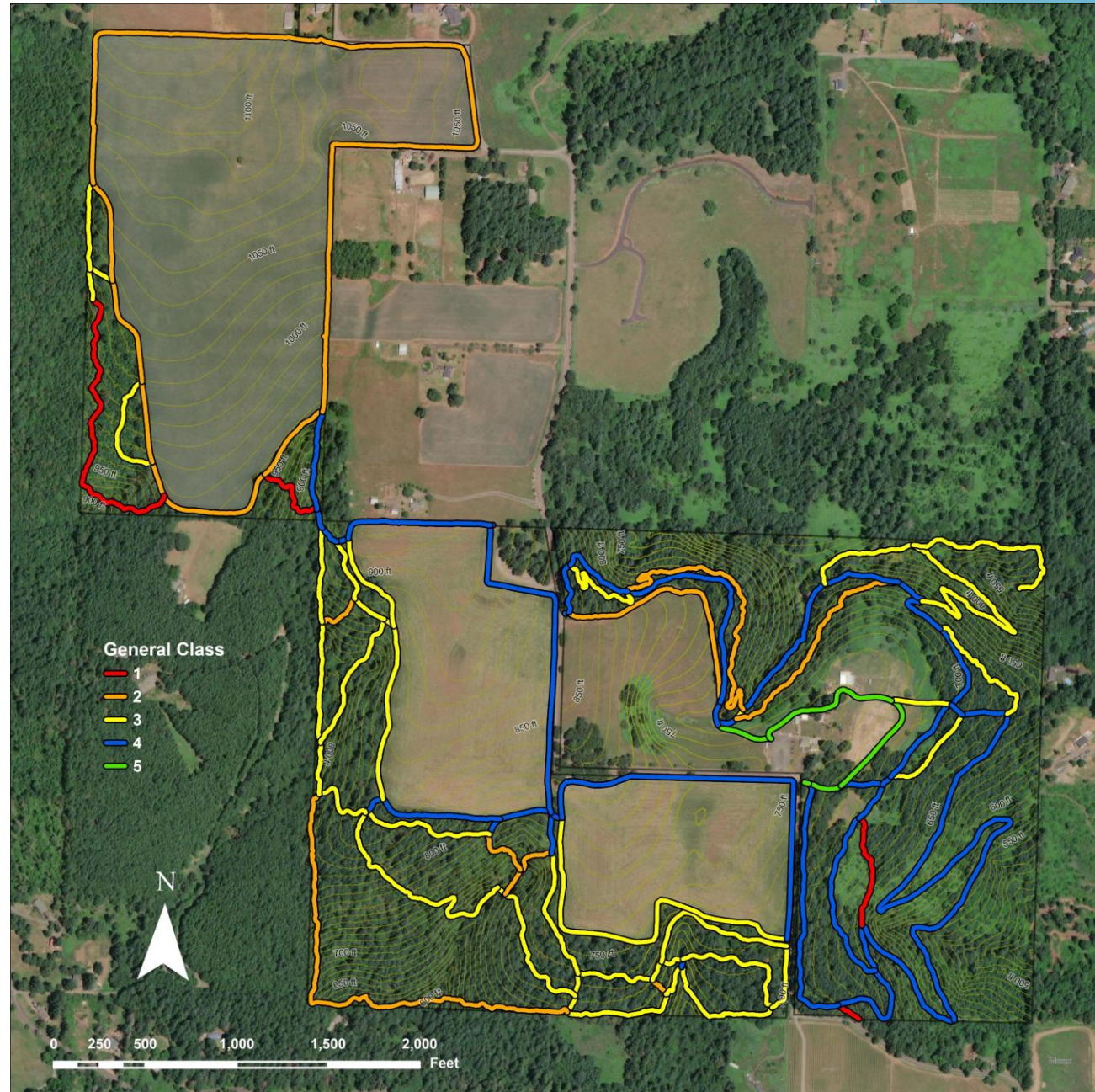
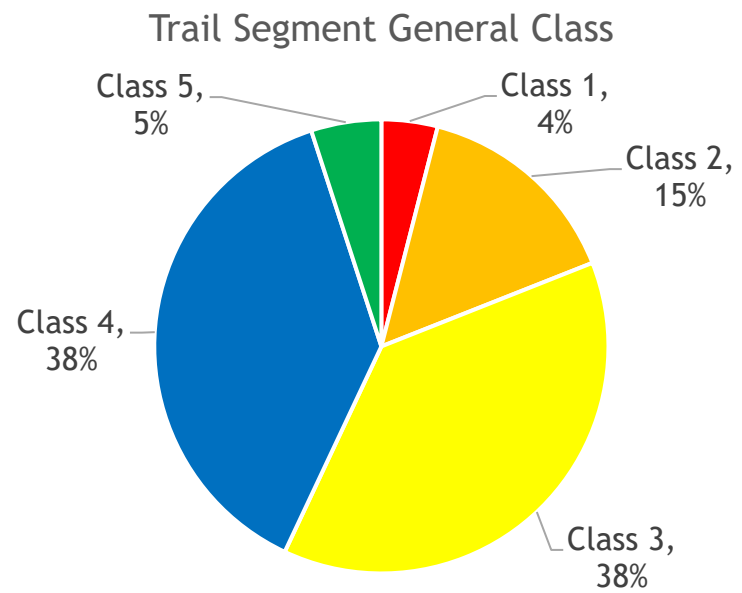
*Source: USFS Trail Fundamentals and Trail Management Objectives*

# Trails Overview

- 12.4 miles total
  - 5 miles east of Parrett Mountain Road
  - 7 miles west of Parrett Mountain Road
- 104 unique trail segments

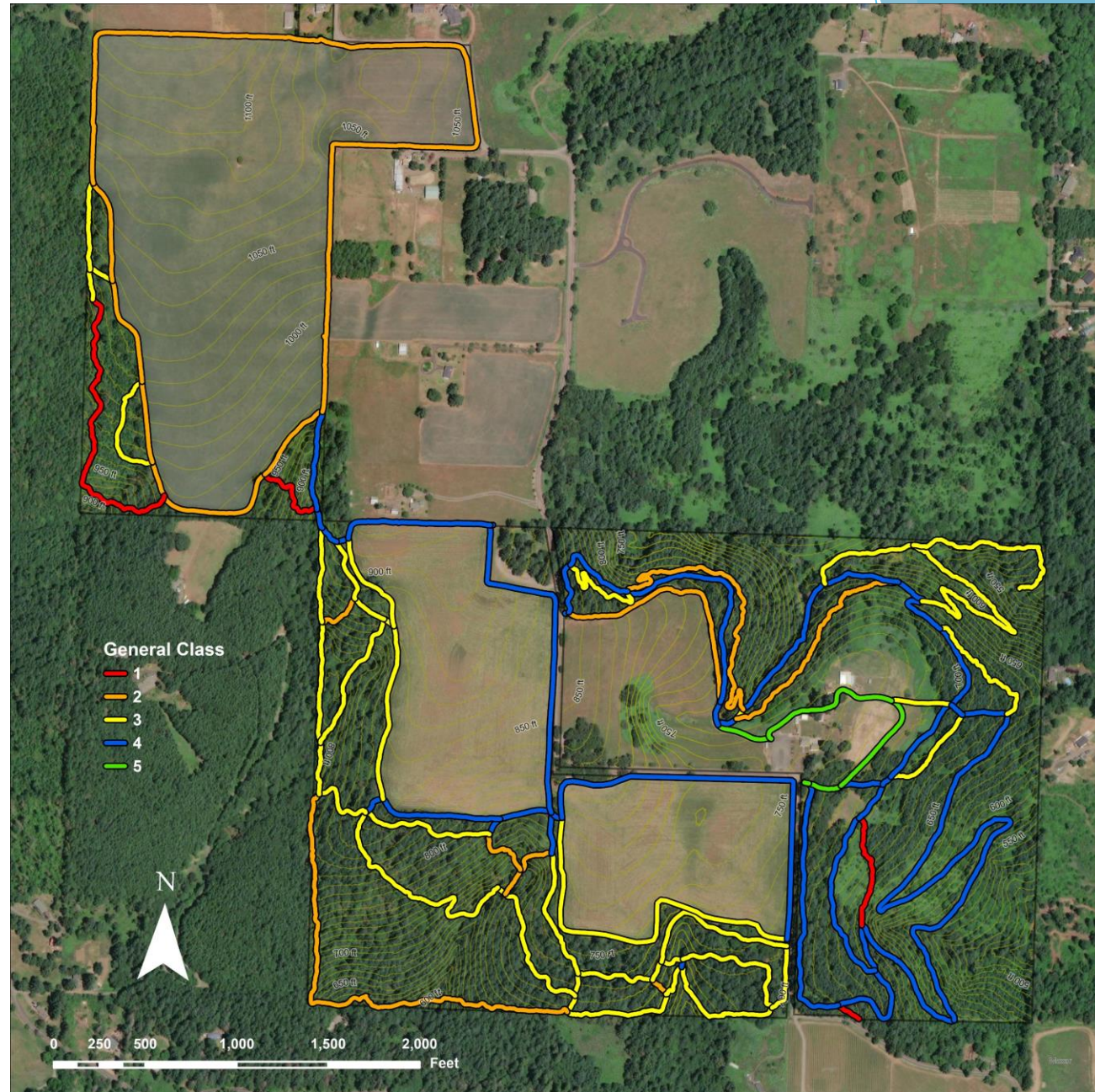
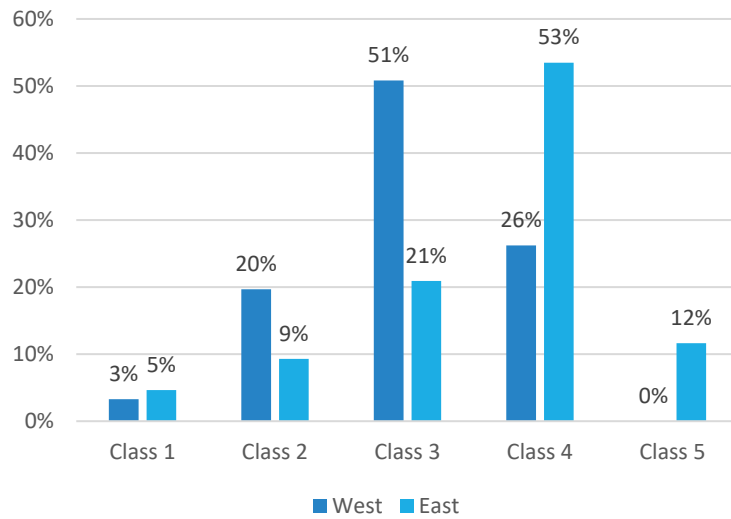


# Trail Class



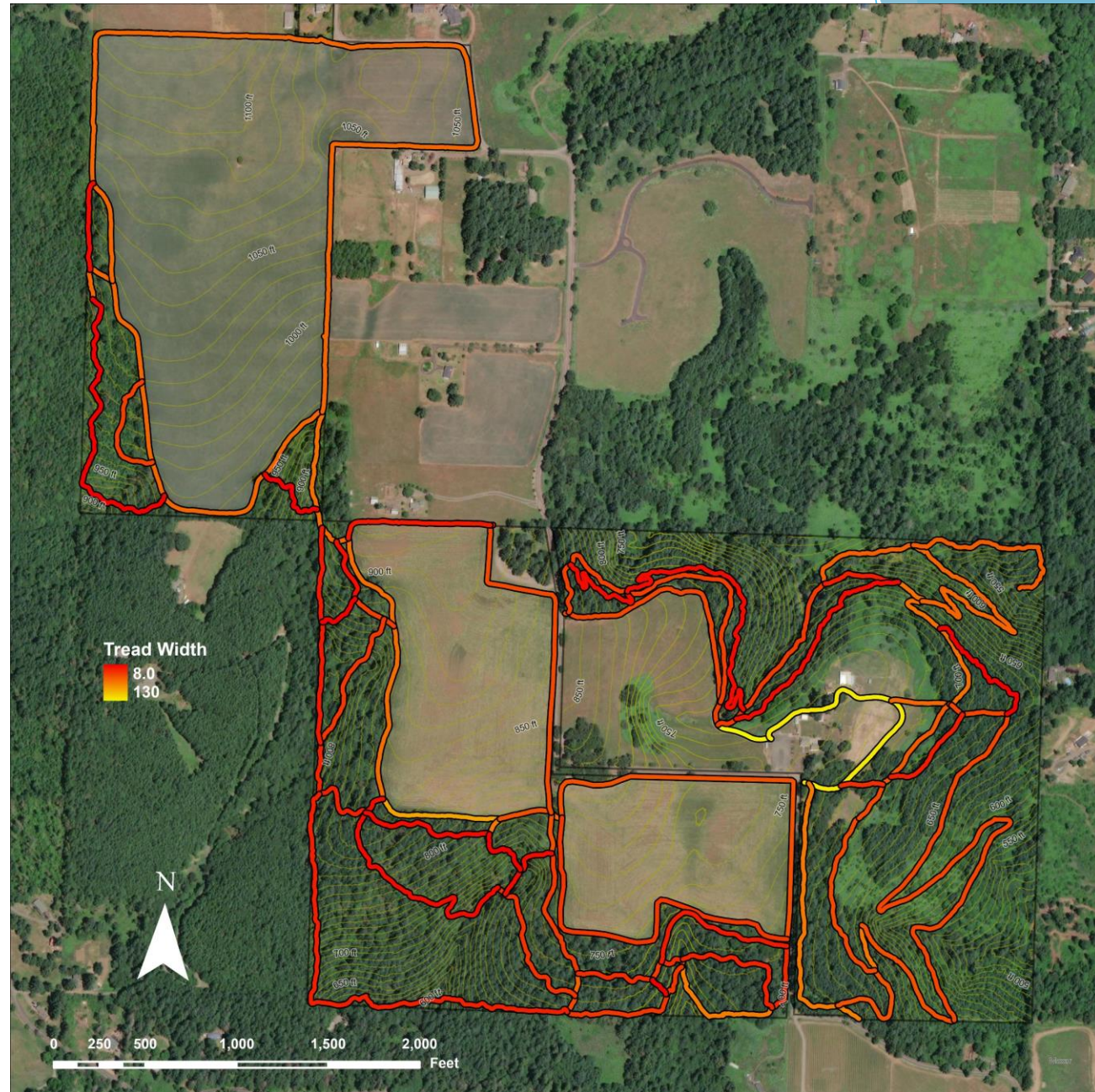
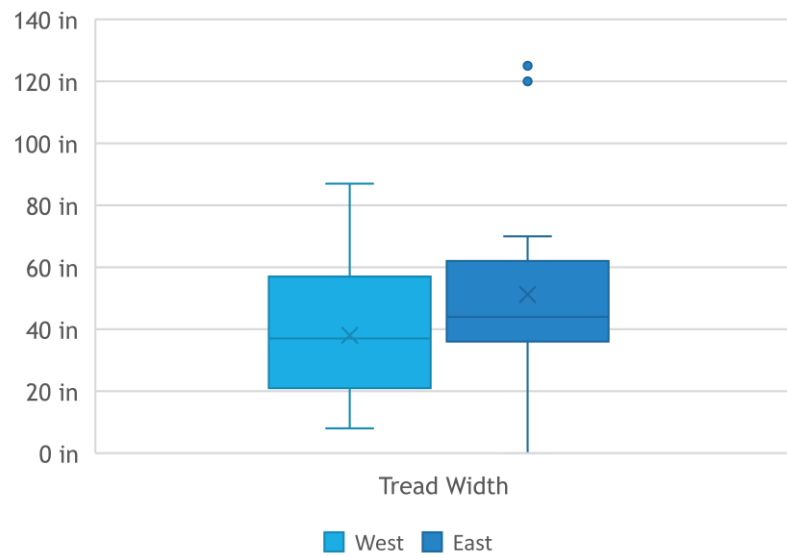
# Trail Class

Trail Segment General Class by Zone



# Tread Width

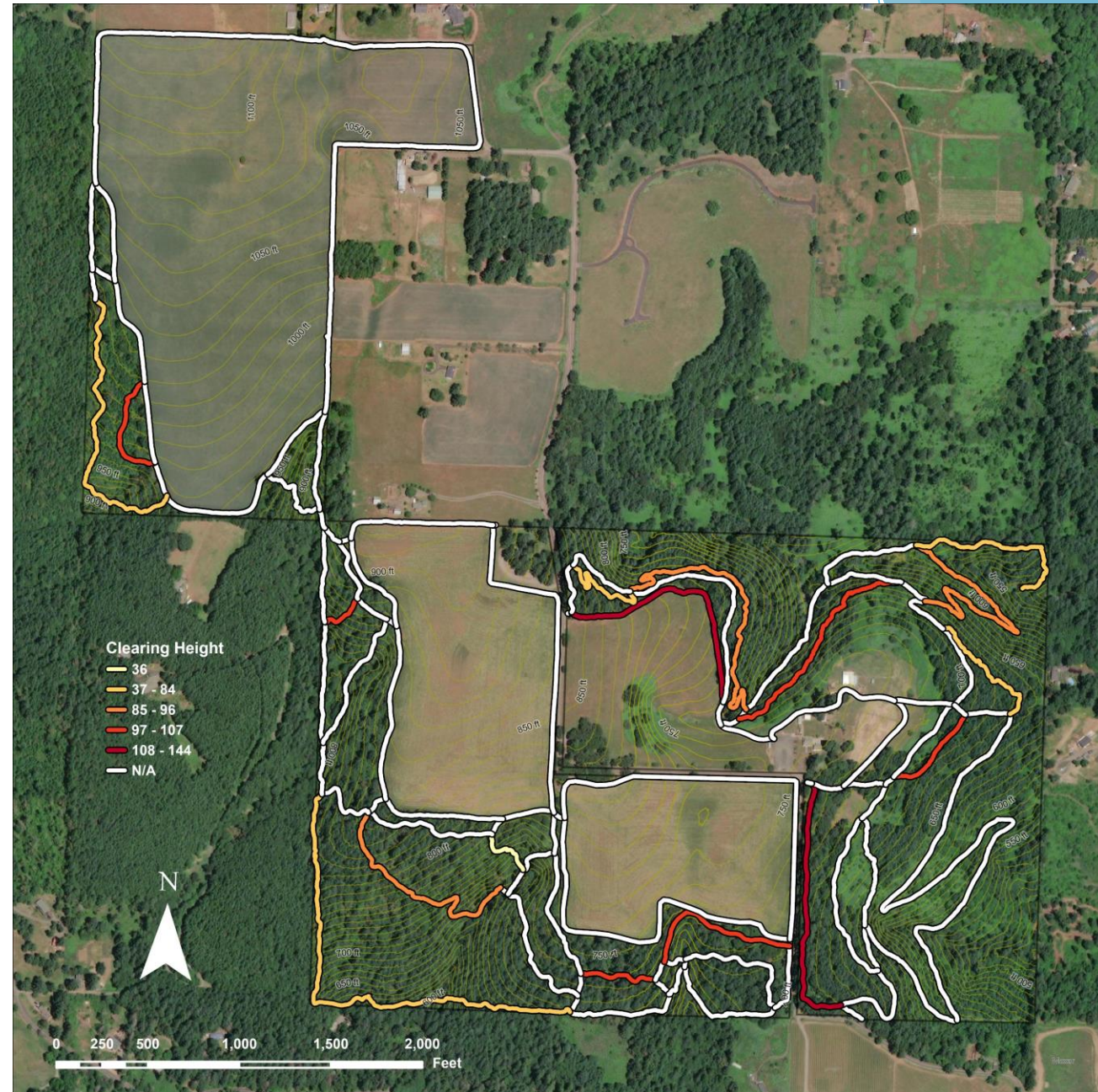
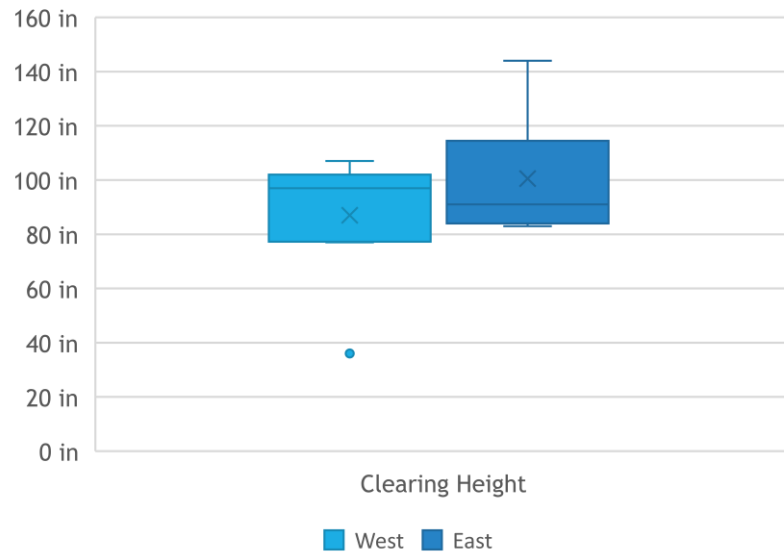
Trail Segment Tread Width by Zone





# Clearing Height

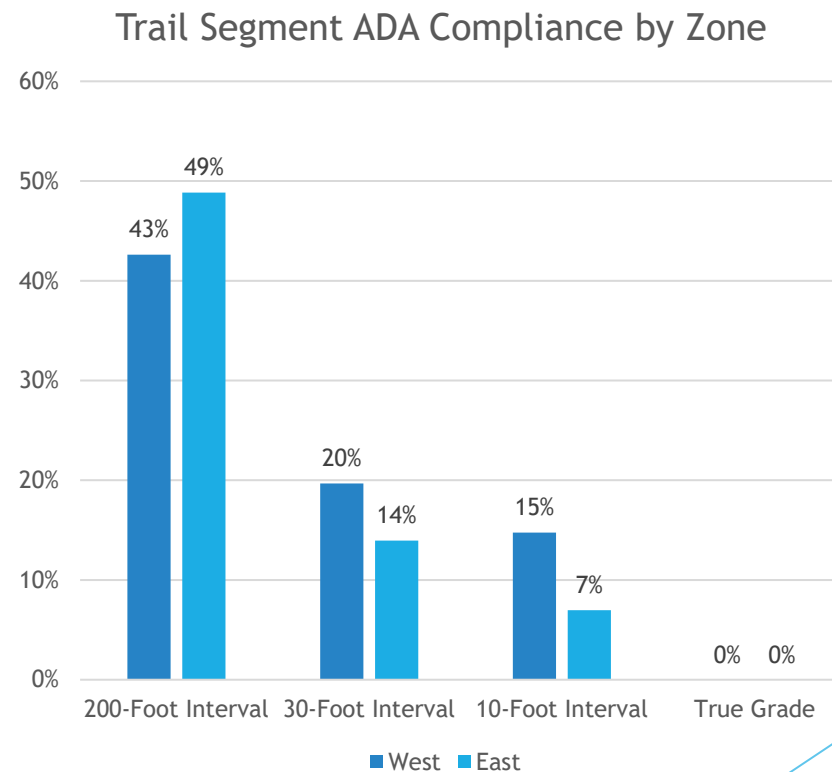
Trail Segment Clearing Height by Zone



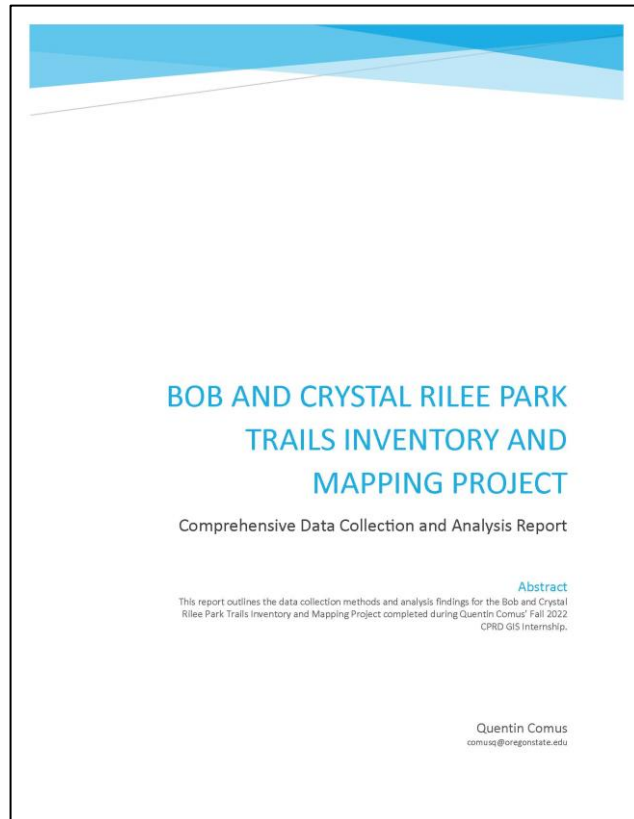
# ADA Compliance

- ▶ Running Grade and Maximum Length
  - ▶ 5-8.33% grade over 200 feet
  - ▶ 8.33-10% grade over 30 feet
  - ▶ 10-12% grade over 10 feet
  - ▶ <5% true grade

Source: USFS Trail Accessibility Guidelines



# Conclusion



- ▶ Comprehensive Report provides more information on the internship, data collection methods, and trail inventory analysis.
- ▶ External (visitor) maps will be produced in the coming weeks in coordination with CPRD staff.
- ▶ Trail signage design and placement recommendations will come out of the CHTAC Trail Signage Focus Group in the coming weeks.

# Questions?

Prepared by Quentin Comus ('23)  
comusq@oregonstate.edu