

# BOB AND CRYSTAL RILEE PARK

## Master Plan - Preferred Alternative



### Legend

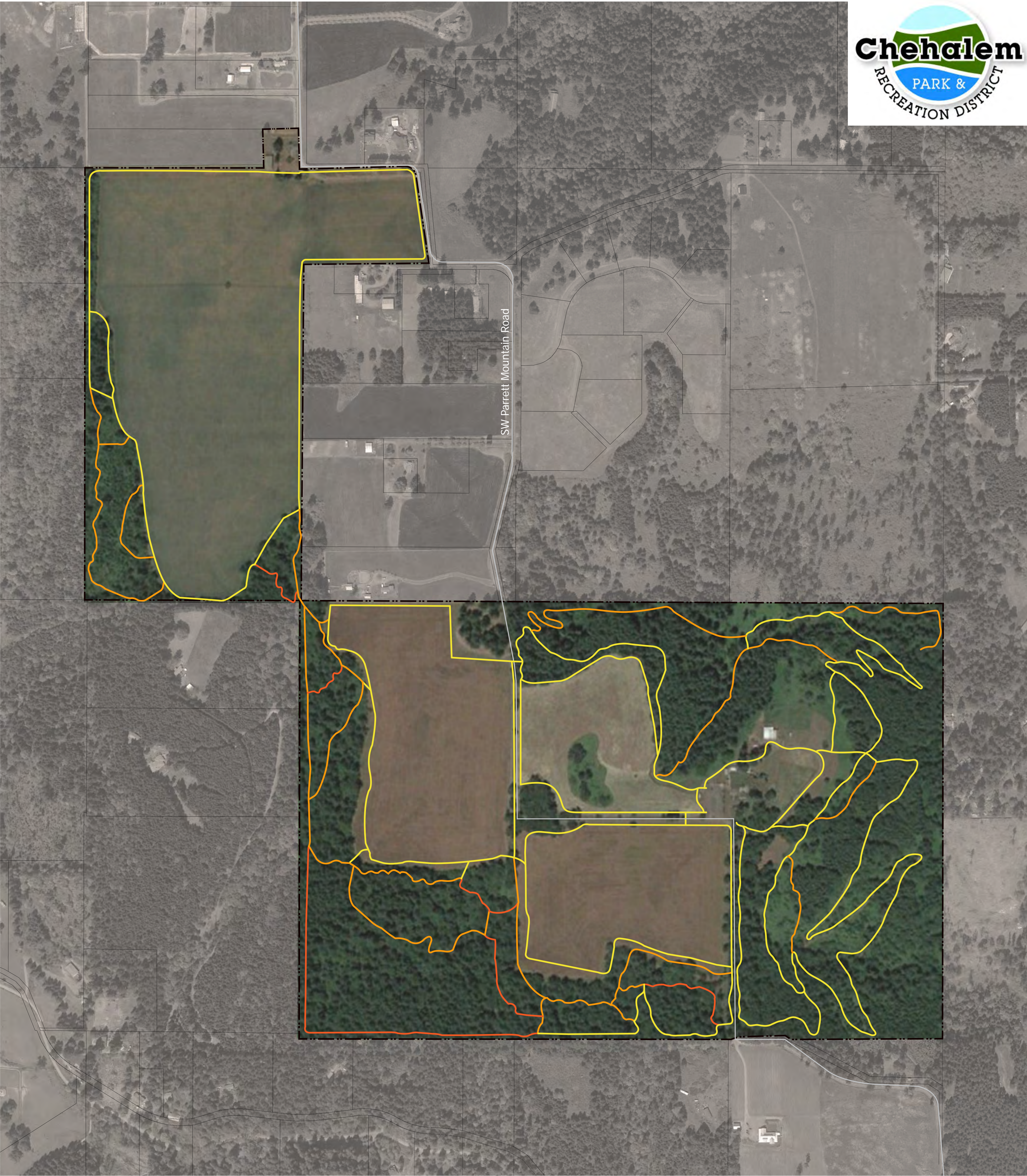
- Trail: Equestrian and Pedestrian Use
- Creek or Drainage Corridor
- Ⓐ Equestrian Trailhead Improvements:
  - Expand parking lot
  - Trailhead kiosk with trail map
  - Vault toilet
  - Picnic shelter
  - Mounting blocks and tie rails
  - Manure composting bin
- Ⓑ Farmhouse Trailhead Improvements:
  - Trailhead kiosk with trail map
  - Picnic shelter
  - Vault Toilet
- Ⓒ Bob's Corner Trailhead Improvements:
  - Trailhead kiosk with trail map
  - Vault toilet
  - Picnic shelter

- Ⓓ Convert Fields to Oak Savannah
- Ⓔ Automated Access Gates at Parking Lots
- Ⓕ Trail Crossing of Parrett Mountain Road With Signage
- Ⓖ New Parking Lot and Trailhead
- Ⓗ Viewpoint Shelter w/ Picnic Table. Views of Mt. St. Helens, Mt. Hood, and Mt. Jefferson
- Ⓘ Viewpoint Shelter w/ Picnic Table. View of Mt. Hood
- Ⓝ Nature-Play Playground
- Ⓚ Picnic shelter and Lawn Area with Restored Wetland and Restored Spring House
- Ⓛ Realign Trail w/ Switchback to Reduce Grade
- Ⓜ Fenced Off-Leash Dog Area
- Ⓝ Fields to Remain in Use for Agriculture Purposes

### General Site Improvements

- Park Signage
  - Parking lot entry signs
  - Park rules and hours posted at trailheads
  - Maps at each trailhead
  - Wayfinding signage throughout the park
- Interpretive signage (historical and environmental)
- Trail surfacing improvements
  - 1/4"-0 gravel
  - Wood chips
- Trash receptacles at trailheads
- Dog waste stations at trailheads
- Benches at trailheads and other specific locations
- Fire mitigation plan w/ TVFR (reservoir, tank, etc)





# BOB AND CRYSTAL RILEE PARK

Master Plan - Trail Difficulty Designation\*



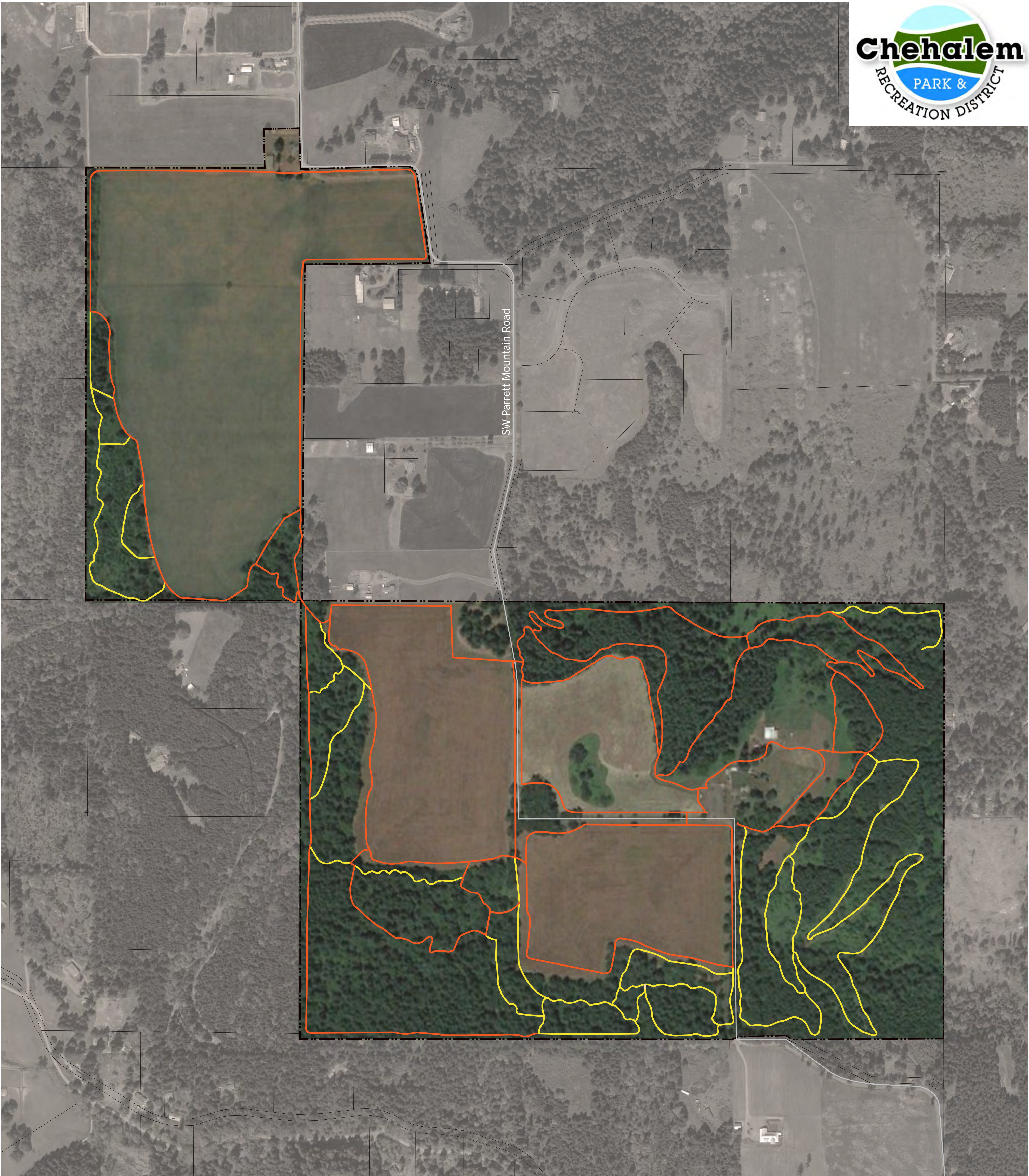
**Legend**

Equestrian Trail Difficulty Ratings

- Easy (Grades up to 15%)
- Moderate (Grades up to 30%)
- Difficult (Grades over 30%)

\* = Grades are interpolated using available GIS topography maps, and are for general recommendation purposes only.





# BOB AND CRYSTAL RILEE PARK

Master Plan - Trail Surfacing



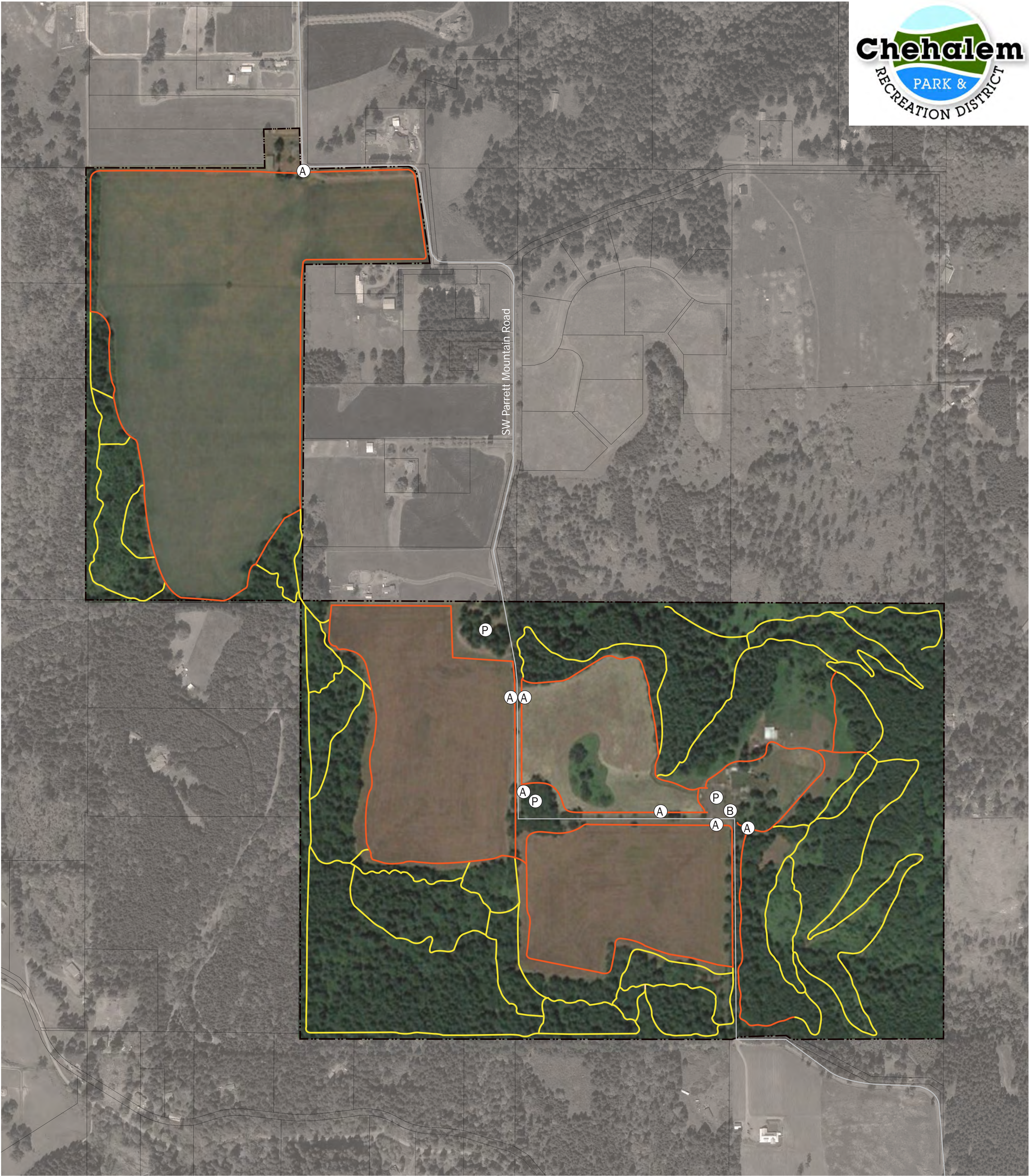
Legend

---

Trail Surface Types

- Wood Chips
- Gravel





FIRE AND EMERGENCY RESPONSE PLAN  
FOR BOB AND CRYSTAL RILEE PARK  
2024



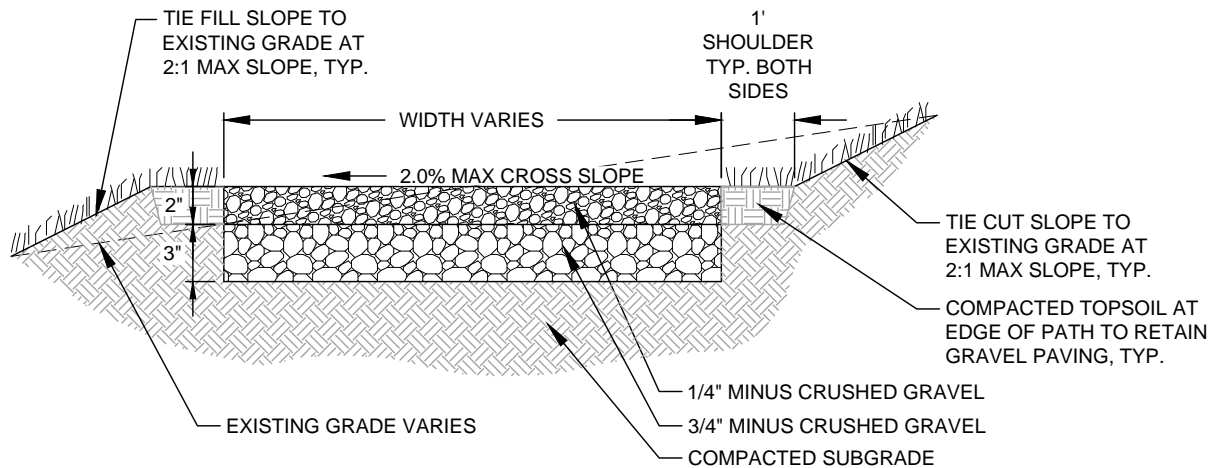
- Legend
- ATV Emergency Access
  - Fire and Emergency Vehicle Access
  - Gravel Parking Lot
  - Access Gates
  - Lock Box Location

Note:  
Some of the ATV emergency access routes may be accessible by larger emergency vehicles depending on specific capabilities of the emergency response vehicles to handle steep grades and narrow trail surfaces.

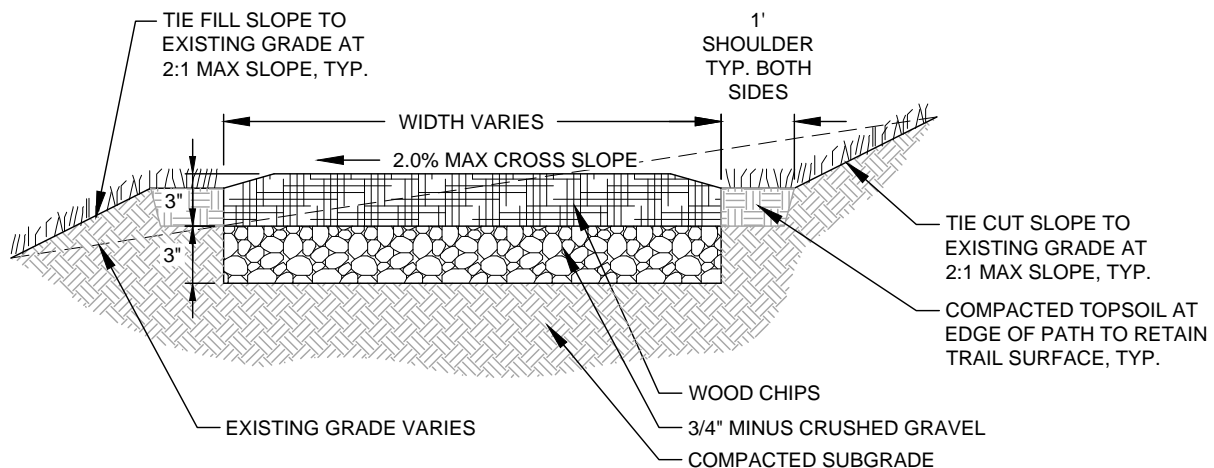


## Trail Surface Design Standards

Trail surface and clearing standards have been developed with the goal to improve user safety, reduce trail maintenance, and provide year-round trail access. Trail widths vary depending on specific site conditions, site constraints, and access needs. The attached Trail Surface Plan illustrates where trails should be improved per the details below.



**Gravel Trail Detail**



**Wood Chip Trail Detail**

## Trail Clearing Standards

---

Equestrian/Pedestrian Trails: Vegetation surrounding equestrian/pedestrian use trails should be cleared to a 10' head clearance and side clearance of 1' beyond the edge of trail.

