



OPEN HOUSE ON THE FUTURE DEVELOPMENT OF BOB & CRYSTAL RILEE PARK

How to stay up to date on this project:

- CPRD website, Bob & Crystal Rilee Park webpage:
<https://www.cprdnewberg.org/general/page/bob-and-crystal-rilee-park-farmhouse>
- Trails webpage for the park, including an interactive, responsive GIS:
<https://www.cprdnewberg.org/general/page/bob-crystal-rilee-park-trails-0>
- Subscribe to the CPRD eNewsletter for this park:
(Check the box for the Bob & Crystal Rilee Park eNewsletter.)
<https://www.cprdnewberg.org/general/page/subscribe-cprd-enewsletters>
- Email comments/questions to Kat Ricker at kricker@cprdnewberg.org

**OPEN HOUSE ON THE FUTURE
DEVELOPMENT OF BOB & CRYSTAL RILEE PARK**

Tonight's Agenda:

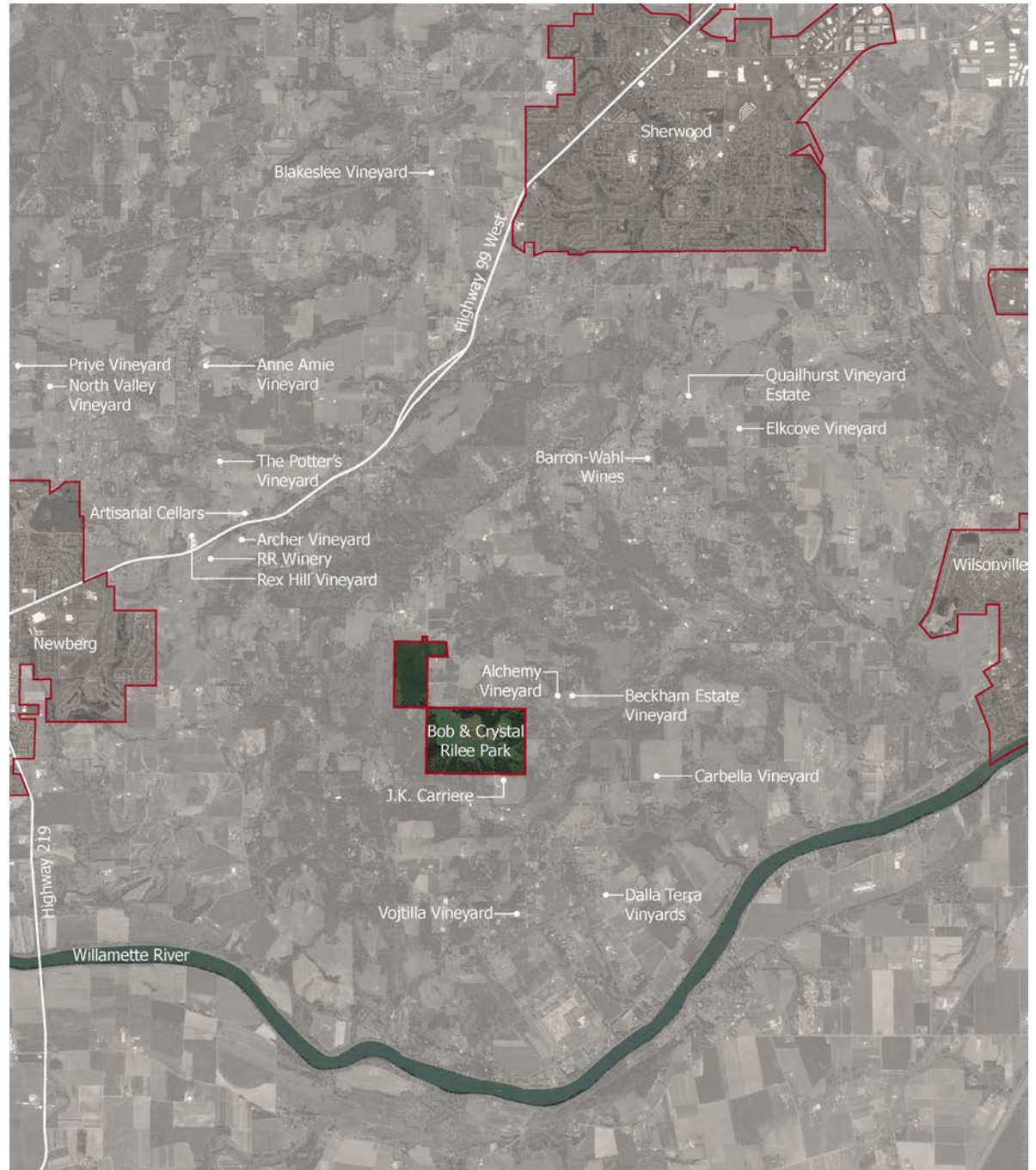
- Review the Park's history, analysis reports, and current conditions.
- Present potential improvements.
- Gather feedback.

Outcomes:

- Summarize themes and feedback to help inform the Park Master Plan.
- Prioritize future improvements.

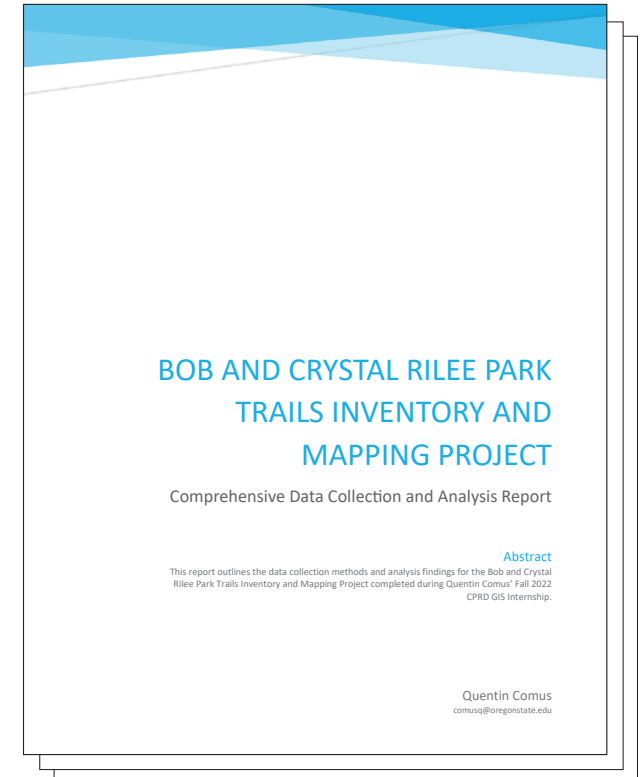
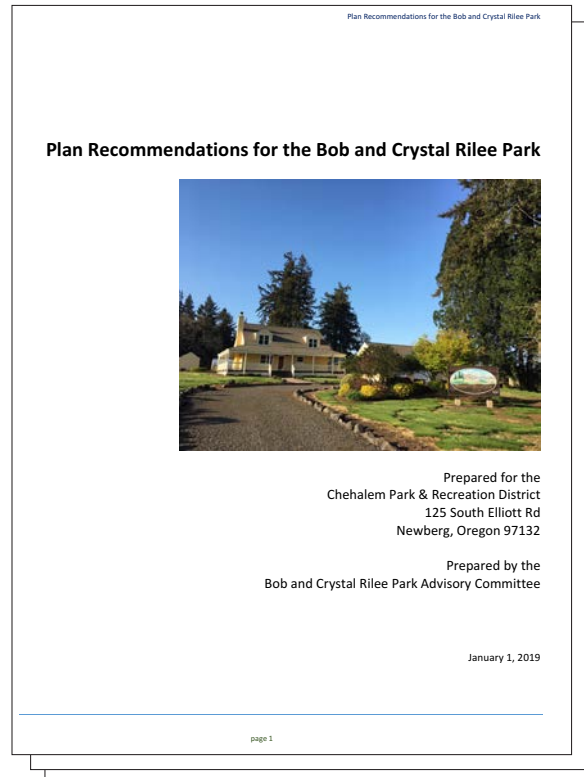
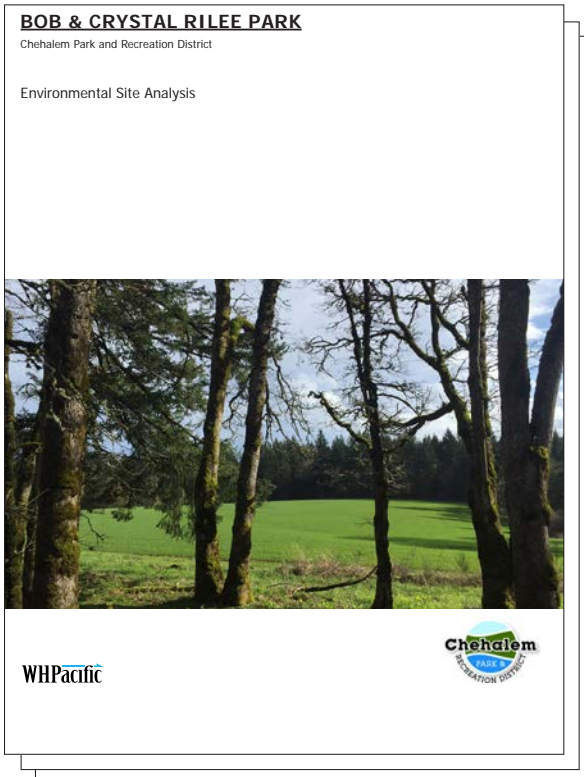
Regional Context:

- Located in rural Yamhill County on Parrett Mountain.
- Zoned EFU-40
- Surrounded by seasonal croplands, vineyards, livestock pastures, and homes.



Project Background:

- 2014: CPRD acquired the 327-acre property.
- 2016: Environmental Assessment and Site Analysis completed.
- 2019: Advisory Committee Report completed.
- 2022: Trails Inventory and Mapping completed.



History of the Property:

- Originally “Parrett Mountain Farm” named after Samuel and Maria Everest Parrett.



Crystal Dawn Smith Rilee's Wishes for the Property and CPRD's Acquisition:

Crystal Dawn Smith Rilee was the great granddaughter of Samuel Parrett. It was her wish that the land be held in one unit and not be developed and sold off. The Crystal Dawn Smith Rilee Foundation started managing the property in 2007 upon Crystal Rilee's death. CPRD acquired the property as a combination of legacy donation and outright purchase from the Foundation. The purchase of Parrett Mountain Farm from the Crystal Dawn Smith Rilee Foundation was completed on January 29, 2014.

"This decision to give the land to CPRD was made by the foundation as a positive answer to the best future interests of the community, following the wishes of Crystal Rilee to benefit people and allow them to enjoy the land she'd acquired," said Mary Dugan, vice president of the Foundation. "Crystal wanted people to enjoy the land and the beauty of nature there and was adamantly against any future residential or business development on the property, so she would be very pleased to have it become a park."

The mission of Chehalem Park and Recreation District is to connect and enrich our community through parks, recreation, open space, natural resources, and educational opportunities. It is the intention of CPRD to fulfill its mandate to the public in the development of this wonderful property into a robust, enjoyable park which serves the needs and desires of various park users, from hikers and picnickers to equestrians and mountain bicyclists. CPRD also currently leases part of the property to a farmer, continuing the heritage of farming practices on the land.

It is important to note that no limitations were placed on CPRD's use of the property as a public park in the terms of the purchase.

Current Facilities and Uses:

- Farm House
- Parking Lot
- Patio and Gardens
- Museum and Catering Kitchen
- Barns and Outbuildings
- Active Farmland
- Current Event Space (100 Guests)



Key Map



Legend

- Existing Trails
- Ephemeral Creek
- Intermittent Creek

CENTURY FARM AND GARDENS



Current Facilities and Uses:

- Former Parrett Mountain School
(now a residence for caretaker)



Key Map



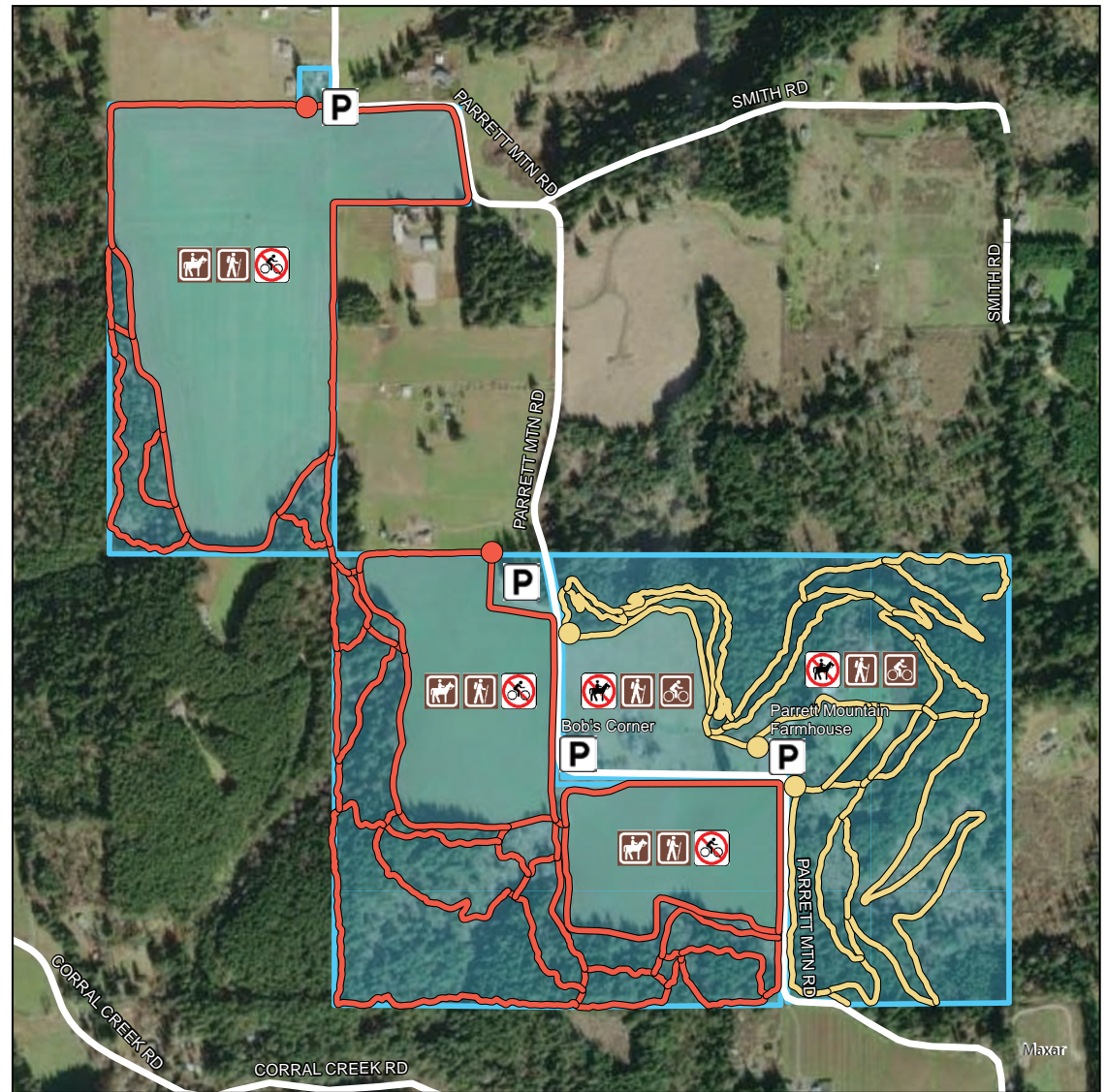
Current Facilities and Uses:

- Bob's Corner
- Equestrian Trailhead
- Leased farmland
- Forested areas



Current Facilities and Uses:

- Network of Trails

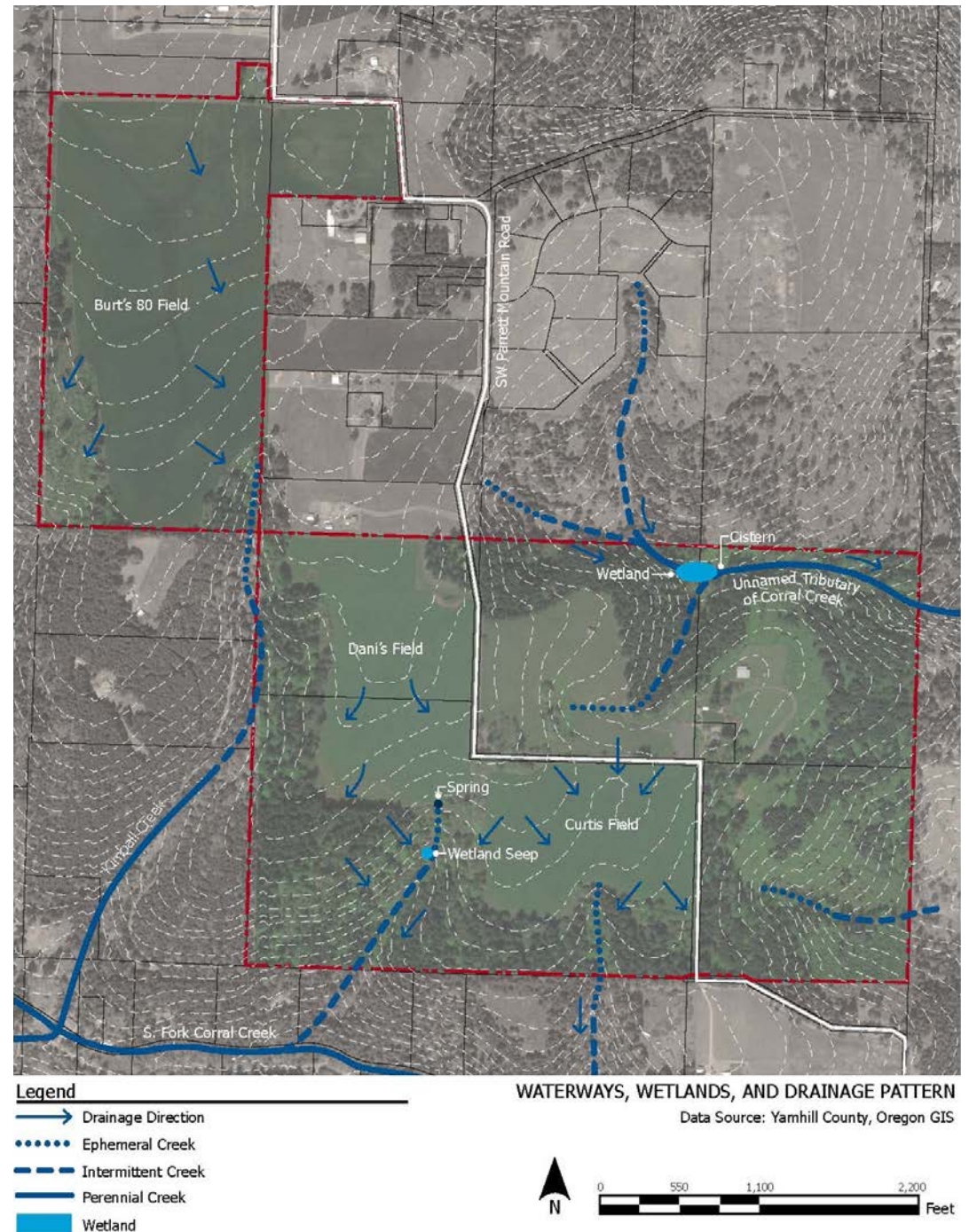


- | | |
|--------------------------------------|------------------------------------|
| Parking Lot | Hiking & Horse Trail (No Bicycles) |
| Trailhead (Hikers and Horses only) | Hiking & Bicycle Trail (No Horses) |
| Trailhead (Hikers and Bicycles only) | Park Boundaries |
| N | 0 500 1,000 2,000 Feet |



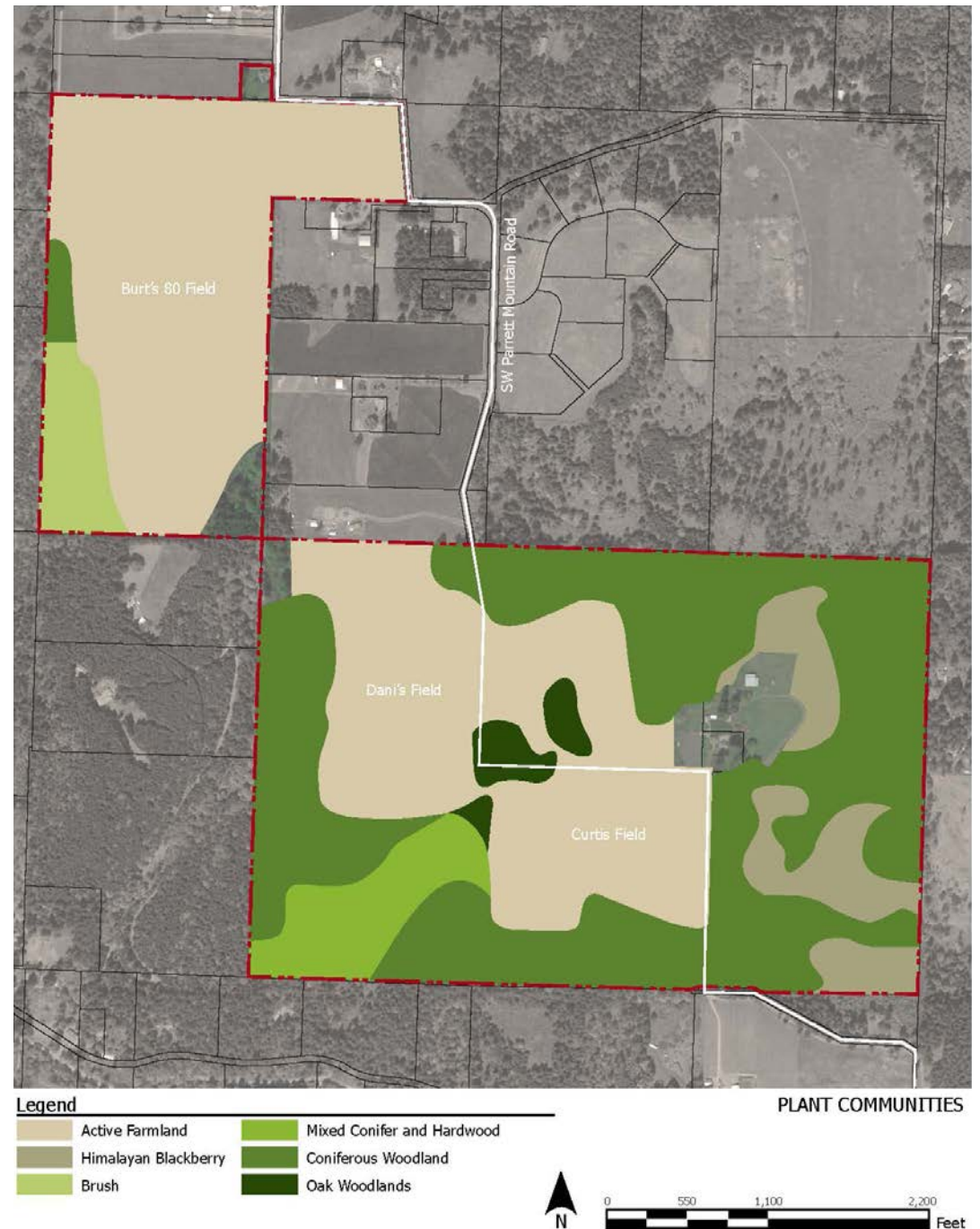
Site Hydrology:

- Two wetland seeps
- Creeks and drainages



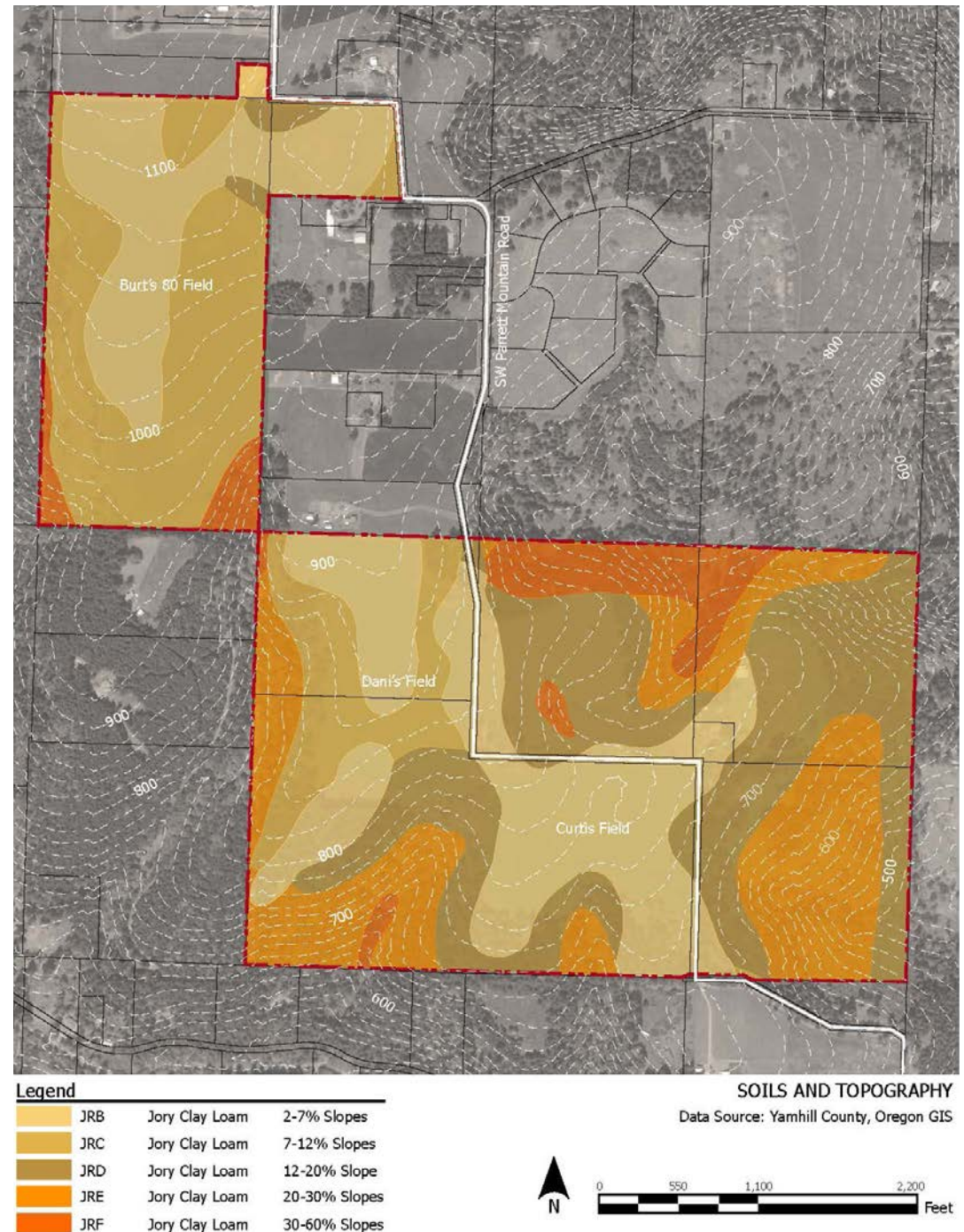
Site Vegetation:

- Forests and wooded areas
- Agriculture fields
- Invasive plant species



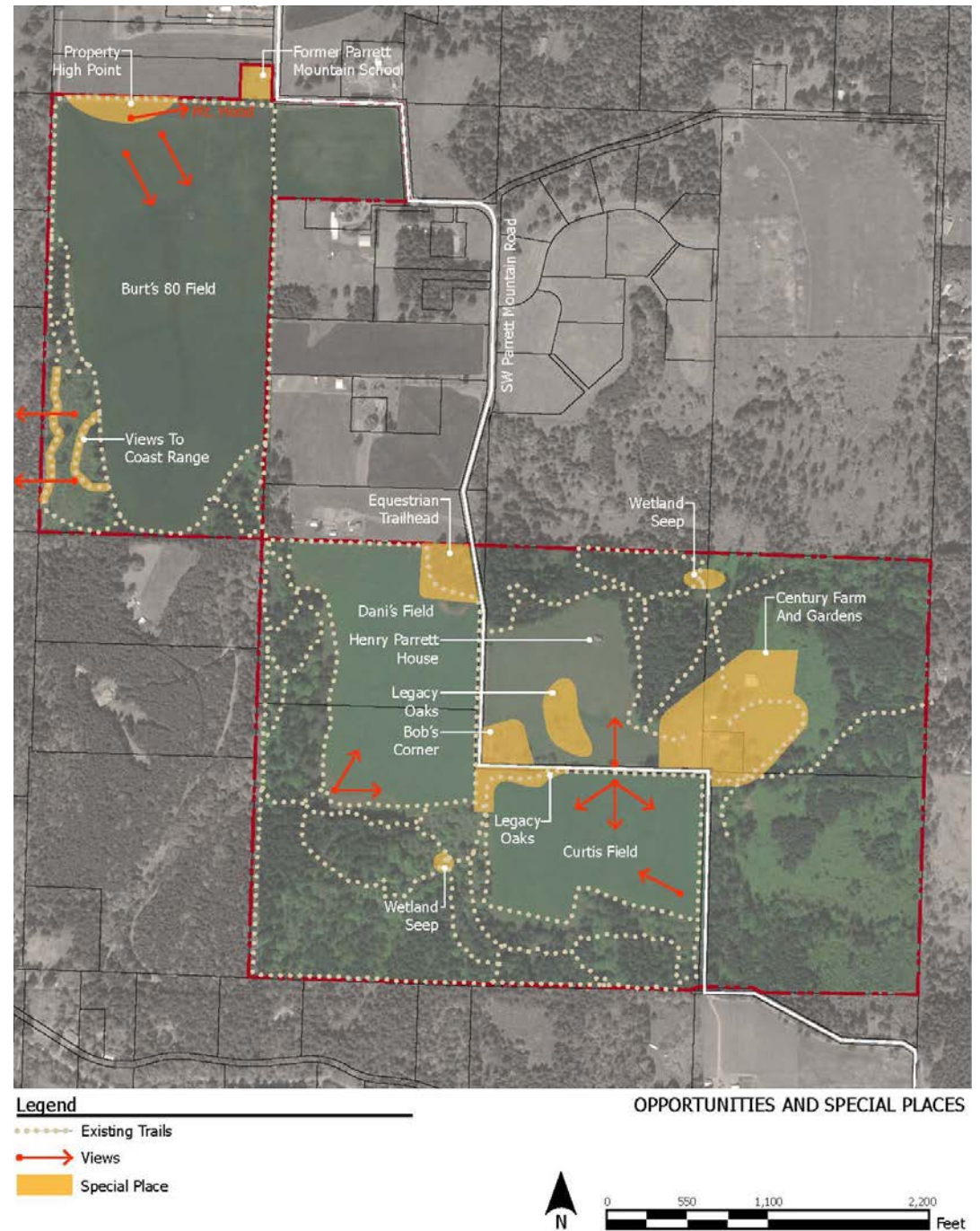
Site Soils and Topography:

- Jory Clay Loam soils
- Slopes of 0% to >30%
- Elevation range: 460' to 1130'



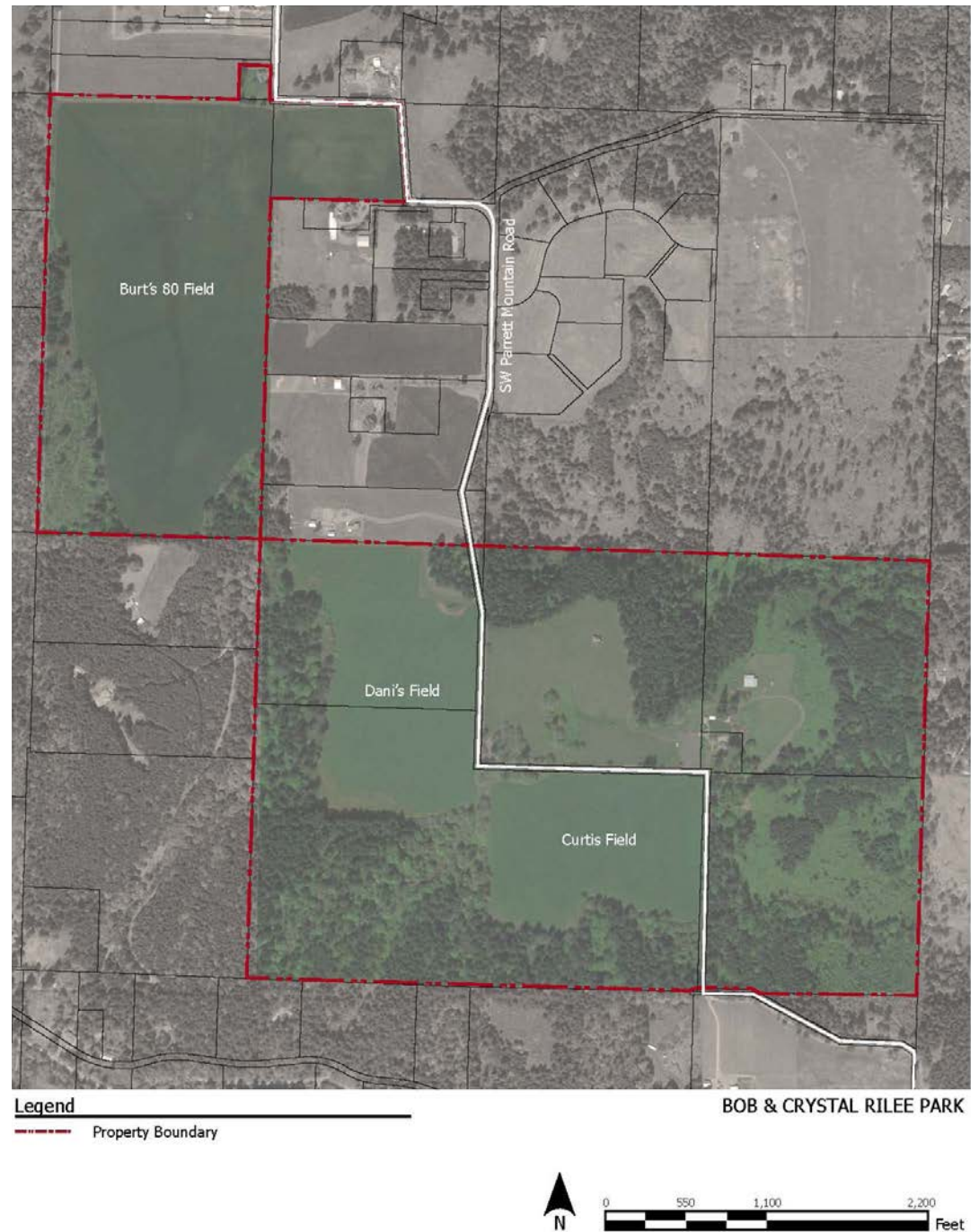
Opportunities and Special Places:

- Existing Trail Network
- Gated Entrances
- Views
- Farm House and Gardens



Park District's Goals for the Master Plan:

- Capture the community's desire for recreation.
- Capitalize on the scenic and nature park qualities of the property.
- Respect the constraints of the land.
- Organize the trail network and signage.
- Manage the farm house and gardens for limited events.
- Showcase the farming heritage of the property.
- Identify future park improvements.



Vote for Potential Future Improvements:

TRAILHEAD KIOSKS AND TRAIL SIGNAGE



HISTORICAL INTERPRETIVE SIGNAGE



Vote for Potential Future Improvements:

ADVENTURE/ NATURE PLAY



PICNIC AREAS & PICNIC SHELTERS



Vote for Potential Future Improvements:

MOUNTAIN BIKE TRAIL IMPROVEMENTS

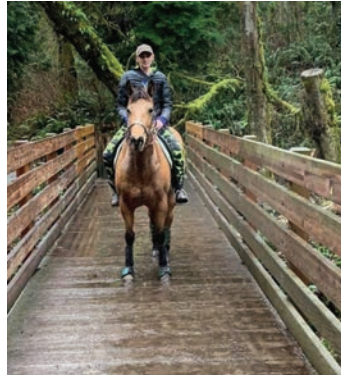


OBSTACLE COURSE RACING



Vote for Potential Future Improvements:

EQUESTRIAN TRAIL IMPROVEMENTS



RESTROOM FACILITIES



Vote for Potential Future Improvements:

EVENT SPACE IMPROVEMENTS



VIEWPOINTS & SEATING AREAS



Closing and Voting Activity:

- Use stickers to vote for potential park improvements.
- Q & A / Open discussion time.
- CPRD website, Bob & Crystal Rilee Park webpage:
<https://www.cprdnewberg.org/general/page/bob-and-crystal-rilee-park-farmhouse>
- Trails webpage for the park, including an interactive, responsive GIS:
<https://www.cprdnewberg.org/general/page/bob-crystal-rilee-park-trails-0>
- Subscribe to the CPRD eNewsletter for this park:
(Check the box for the Bob & Crystal Rilee Park eNewsletter.)
<https://www.cprdnewberg.org/general/page/subscribe-cprd-e newsletters>
- Email follow up comments/questions to Kat Ricker at kricker@cprdnewberg.org



OPEN HOUSE ON THE FUTURE DEVELOPMENT OF BOB & CRYSTAL RILEE PARK