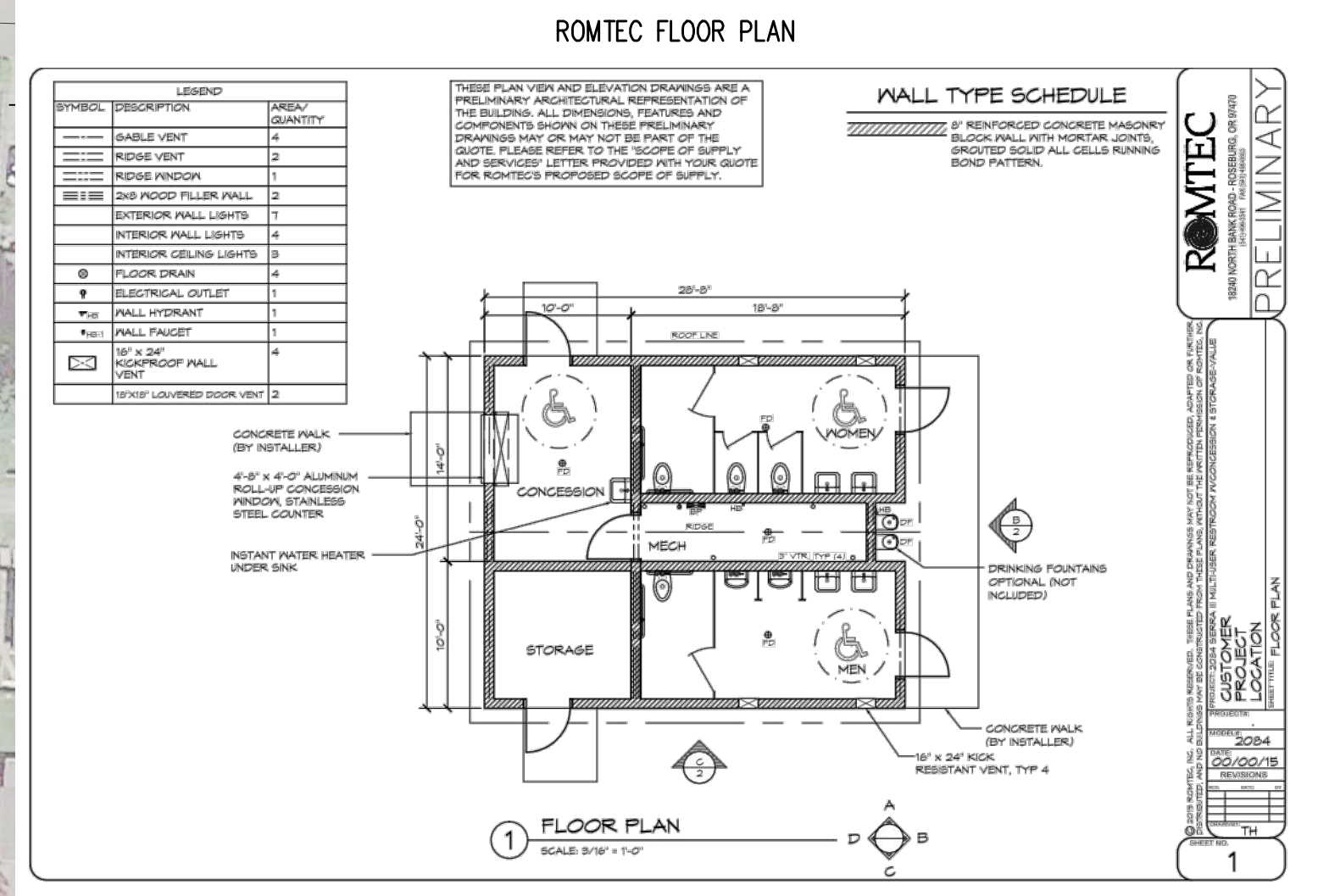


AMENITIES PROVIDED:

1. 7 LANE TRACK
2. FIELD EVENTS INCLUDED IN D-ZONE OR AROUND TRACK
 - LONG JUMP
 - TRIPLE JUMP
 - POLE VAULT
 - DISCUS
 - HIGH JUMP
 - JAVELIN
 - SHOT PUT
3. SOCCER FIELD: 215 X 345 FEET
 - MINIMUM H.S. SIZE: 165 X 300 FEET
 - MAXIMUM H.S. SIZE: 240 X 360 FEET
4. FOOTBALL FIELD: 160 X 360 FEET (10' RUNOUT PROVIDED)
5. LACROSSE FIELD: 180 X 330 FEET (BOYS AND GIRLS UNIFIED STANDARD)
 - STRIPED AS A COMBINED BOYS/GIRLS FIELD
6. 4 SPORT LIGHTS AROUND FIELDS

ADDITIONAL IMPROVEMENTS

1. PICKLE BALL COURTS
 - USA PICKLEBALL STANDARD COURT SIZE: 34 X 64 FEET WITH RUNOUT
5. CONCESSION BUILDING: 28.67 X 24 FEET
 - ROMTEC MODEL 2084 - CONCESSIONS, MECHANICAL ROOM, M/W BATHROOMS (SEE CUTSHEET BELOW)



RENNE FIELD - PRELIMINARY SITE LAYOUT

FULL TRACK AND FIELD WITH PICKLE BALL COURTS