

BOB AND CRYSTAL RILEE PARK TRAILS INVENTORY AND MAPPING PROJECT

Comprehensive Data Collection and Analysis Report

Abstract

This report outlines the data collection methods and analysis findings for the Bob and Crystal Rilee Park Trails Inventory and Mapping Project completed during Quentin Comus' Fall 2022 CPRD GIS Internship.

Quentin Comus
comusq@oregonstate.edu

Table of Contents

| | |
|--|---|
| Background Information | 2 |
| Data Collection and Analysis Methods | 3 |
| Trail System Summary | 4 |

Background Information

Chehalem Park and Recreation District (CPRD) is a local tax district in Yamhill County. Their mission is to connect and enrich our community through parks, recreation, open space, natural resources, and educational opportunities. Altogether, CPRD owns and manages approximately 848 acres of public neighborhood parks, community centers, recreation facilities, and a golf course. They also serve upwards of 30,000 people through fitness classes, senior citizen activities, and youth sports leagues.

This internship provides CPRD an opportunity to inventory, manage, expand, and improve its recreational trail system through field-based GIS data collection, refinement, classification, analysis, and presentation. The work focuses on the 327-acre Bob and Crystal Rilee Park on Parrett Mountain. This park is home to approximately 20 miles of hiking, cycling, and equestrian trails, in addition to a heritage farm listed on the National Register of Historic Places. Altogether, this internship produced a digital inventory of the trails at the Bob and Crystal Rilee Park classified using the *USFS Trail Fundamentals and Trail Management Objectives*. The data collected and analyzed during this internship will then be used to create trail signage and user maps, determine trail uses/restrictions, and inform management practices.

Data Collection and Analysis Methods

This project focuses on collecting spatially accurate trail routes and trail characteristics data. In doing so, a combination of professional geographic information system (GIS) software tools were used alongside analog measurement tools.

Specifically, all trail route data was collected using Esri's *Field Maps* mobile application on a Samsung S21 Ultra smartphone. The trail routes are generated by the mobile application's streaming function, which continuously records geographic positioning system (GPS) points, or vertices, every five (5) feet to produce three-dimensional polylines. This GPS data gathered in the field is accurate within 25 feet on a 95-percent confidence interval. Trail routes were generated for all visible and accessible trails within CPRD's tax lot boundaries at Bob and Crystal Rilee Park between September 30 and November 27, 2022. A new trail route, or segment, was generated between each trail intersection. In addition to generating geospatial trail routes, analog trail characteristics data was collected in the field.

This characteristics data is based on the *USFS Trail Fundamentals and Trail Management Objectives* report. In particular, it includes trail beginning and ending termini, length, managed use, classification, tread type, tread width, and clearing height. Trail length was generated by trail route data through Esri's *Field Maps* mobile application. Managed use was determined by evidence of specific-use tread wear and institutional knowledge. The trail class was determined by personal evaluation against parameters set forth in the *USFS Trail Fundamentals and Trail Management Objectives* report. The tread type was determined by personal evaluation. The tread width was determined by averaging tread width measurements taken at the beginning and ending termini, and then at 200-foot intervals, of each trail segment. The clearing height was determined by measuring the distance of the lowest tree trunk/branch overhanging the trail to the tread, if applicable. All measurements were taken using a standard 25-foot contractor's measuring tape. All data was recorded in waterproof notebooks in the field and transposed into a digital spreadsheet upon return to the office.

Further data calculation was conducted in Microsoft's *Excel* desktop application to determine each trail segment's compliance with the Americans with Disabilities Act (ADA) trail accessibility guidelines. This includes an acceptable trail grade of 5% to 8.33% over 200-foot intervals, 8.33% to 10% over 30-foot intervals, 10% to 12% over 10-foot intervals, and a maximum running grade of 5%. Compliance was determined by calculating the grade over each instance of each interval within each trail segment. For example, if a trail segment is 400 feet long, approximately 40 200-foot interval grade calculations were generated, 74 30-foot interval grade calculations were generated, and so on. Then, if any of these interval grade calculations exceed the maximum allowable grade for the compliance level, the trail segment failed that particular compliance level altogether.

The trail route data and trail characteristics data was then combined in Esri's *ArcGIS Pro* desktop application for further analysis and mapmaking. In particular, the trail route data was inspected and modified for inconsistencies in vertex placement and connection. Then, these polylines were simplified, and the trail characteristics data was imported into the layer. These variables were then used to symbolize the layer for various external and internal applications.

Trail System Summary

Overall, the trail system at Bob and Crystal Rilee Park consists of 104 trail segments totaling 12.4 miles of multi-use trails accessible to the public. Approximately 5 miles of trails are located on the tax lot east of Parrett Mountain Road where the heritage farm is located. The additional 7 miles of trails are located on the tax lots west of Parrett Mountain Road. These trails provide unique recreation experiences for pedestrians, cyclists, and equestrians. They are accessible from a trailhead parking lot in the northeast corner of the southwest tax lot and a trailhead originating from the heritage farm parking lot. This section of the report provides summary statistics of the entire trail system.

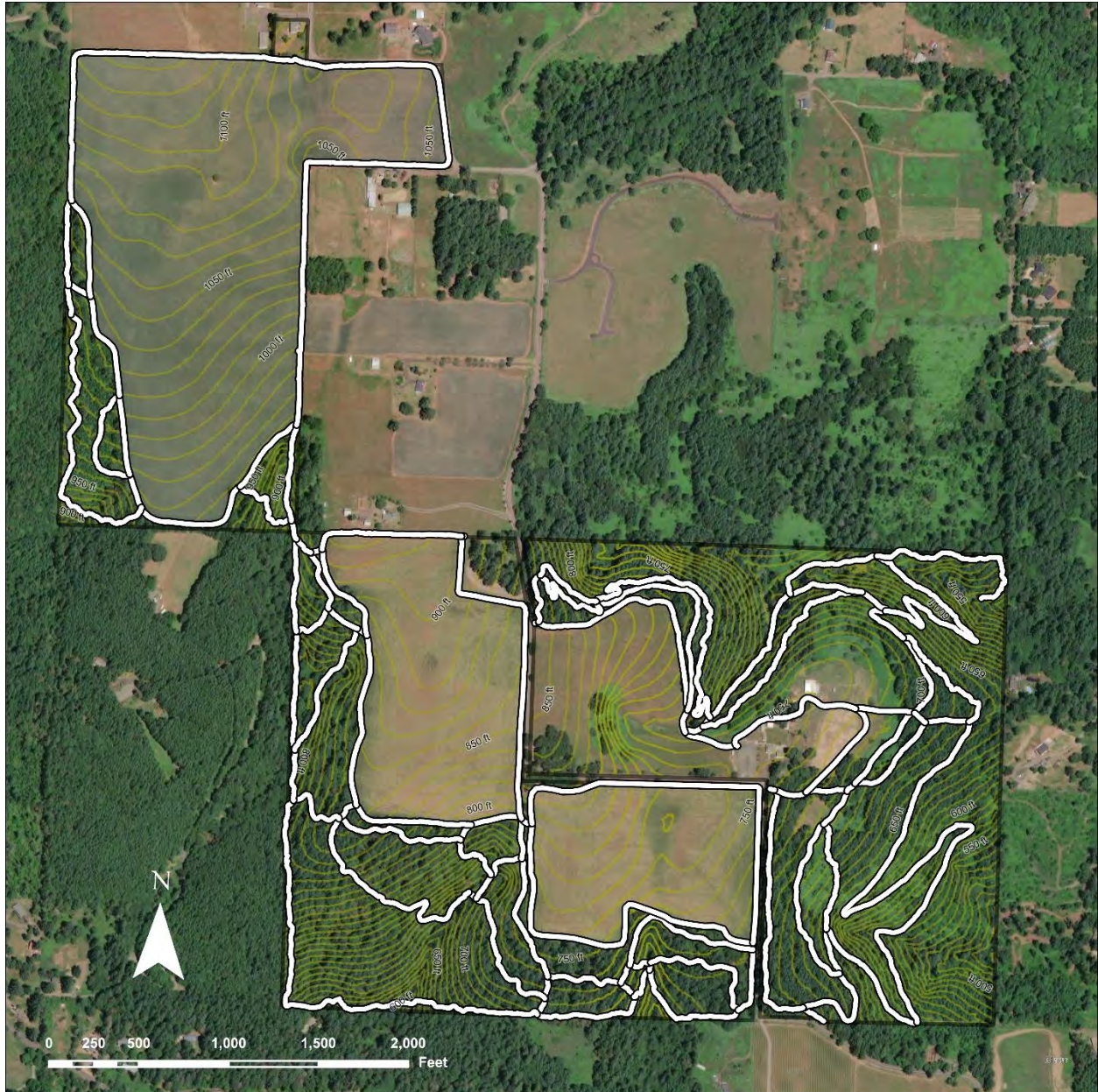


Figure 1 - Trails at Bob and Crystal Rilee Park

Comparing the trails located within the east and west tax lots, the trails east of Parrett Mountain Road are more developed. Specifically, the trails in the east tax lot have an average class of 3.62, while the trails in the west tax lot have an average class of 2.98.

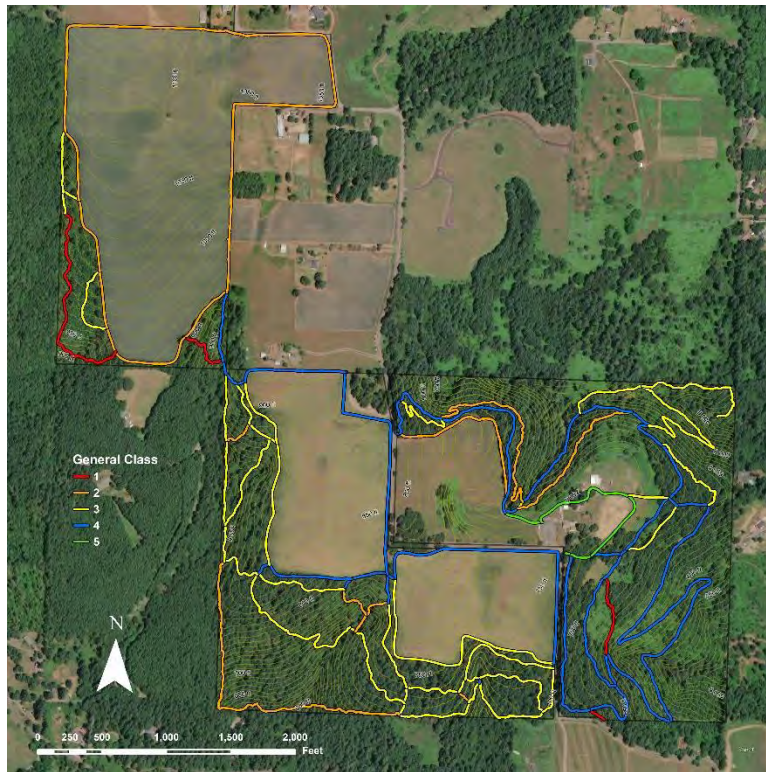


Figure 2 - Trails at Bob and Crystal Rilee Park by General Class

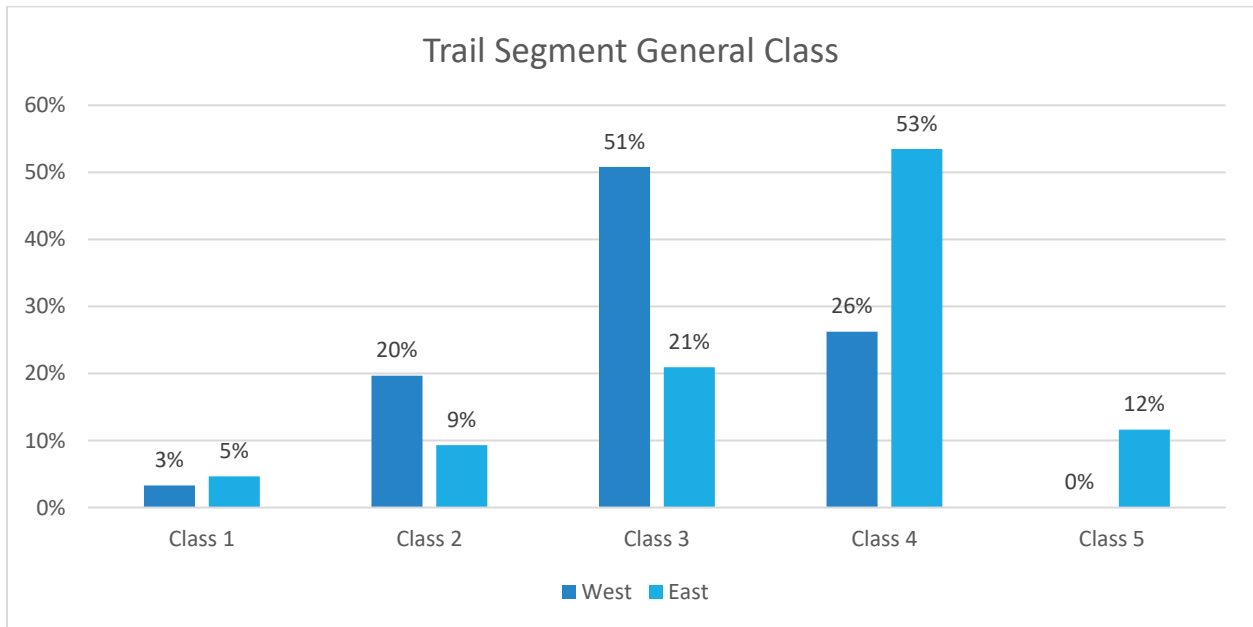


Figure 3 - Percentage of Trail Segments by General Class

These conclusions are supported by tread width and clearing height measurements gathered in the field. The average tread width of trails on the east side of Parrett Mountain Road is 52.32 inches compared to 38.35 inches on the west side. Likewise, the average clearing height of trails within the east tax lot is 100.56 inches, while the clearing height of trails within the west tax lots is 87.00 inches.

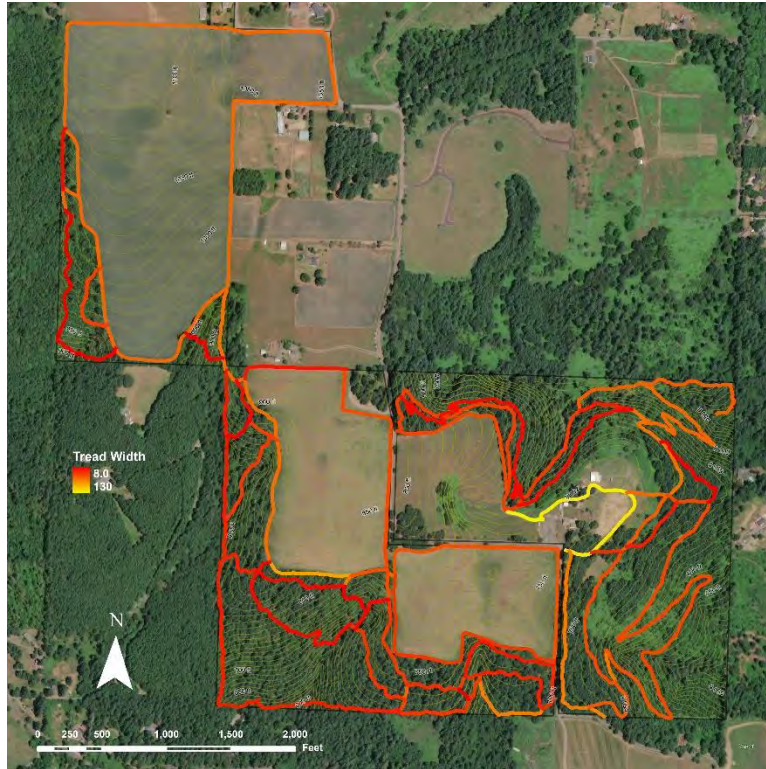


Figure 4 - Trails at Bob and Crystal Rilee Park by Tread Width

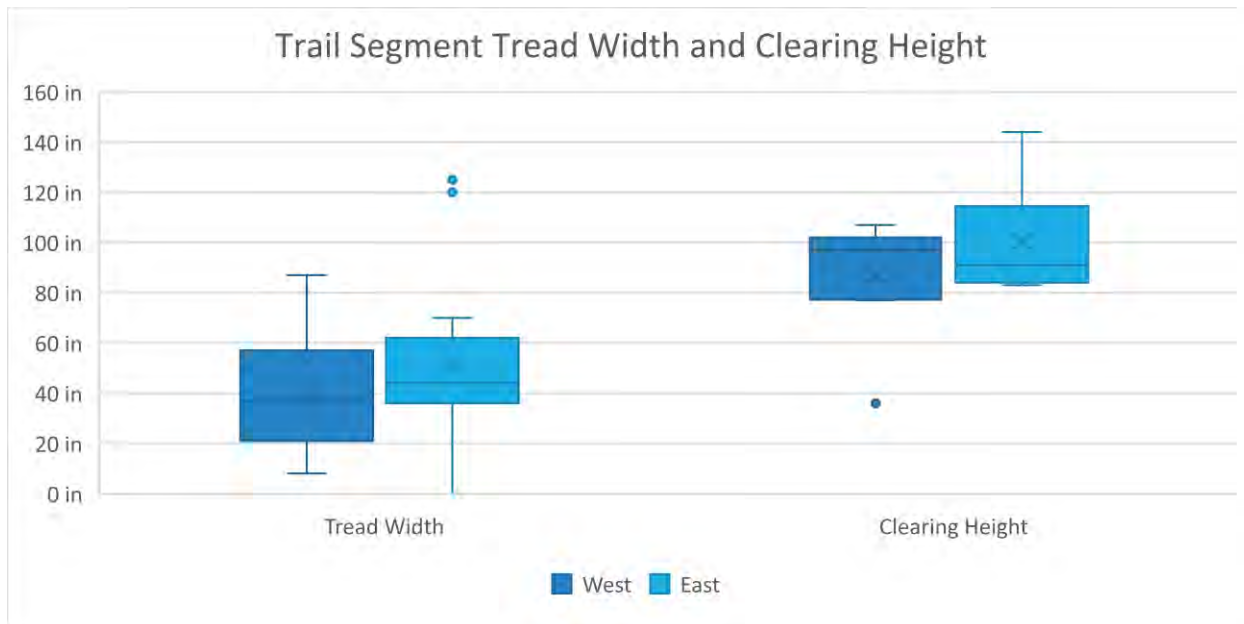


Figure 5 - Box-and-Wisker Plots of Trail Segment Tread Width and Clearing Height

The average running grade of trails within the east and west tax lots are 7.93% and 8.92%, respectively. Considering this data, the trails were evaluated for compliance with ADA trail grade guidelines. In particular, 49% of trails east of Parrett Mountain Road are in compliance with the maximum 8.33% grade over 200-foot intervals guideline. Only 20% of trails were in compliance with the maximum 10% grade over 30-foot intervals guideline, and 15% of trails were in compliance with the maximum 12% grade over 10-foot intervals guideline within the west tax lots. This suggests that trails on the east of Parrett Mountain Road have less elevation change compared to those west of Parrett Mountain Road. No trail segments passed the maximum 5% true grade guideline on either side of Parrett Mountain Road.

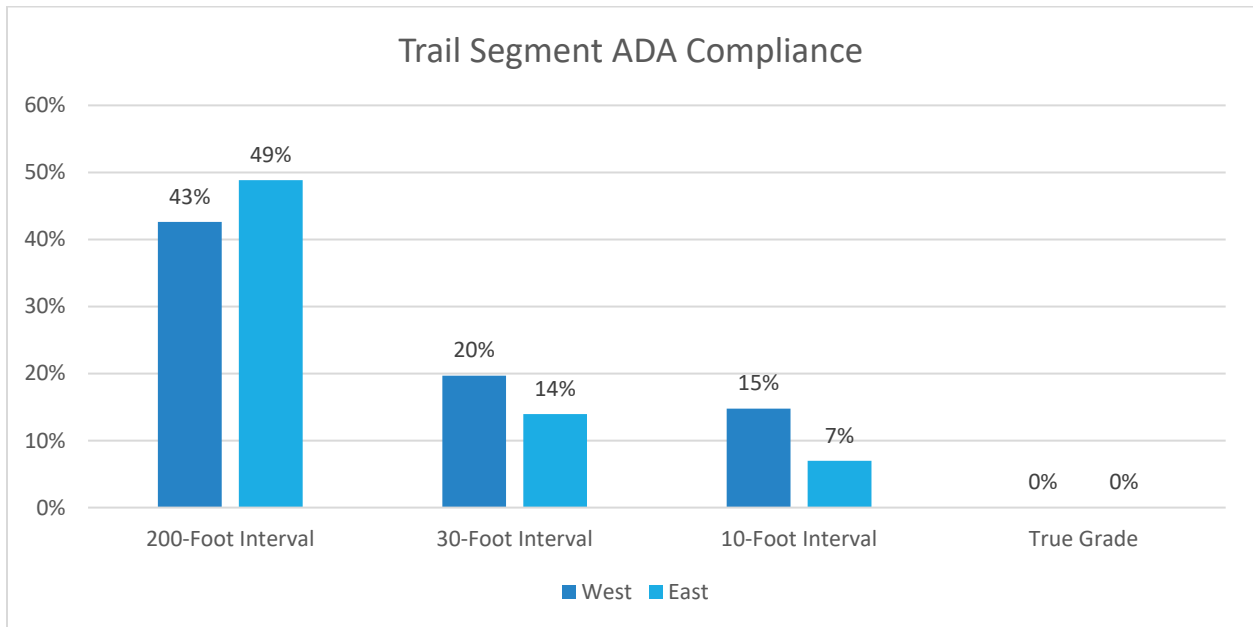


Figure 6 - Percentage of Trail Segments in Compliance with ADA Trail Grade Guidelines

The trail inventory and associated internal maps are attached to this report for reference.

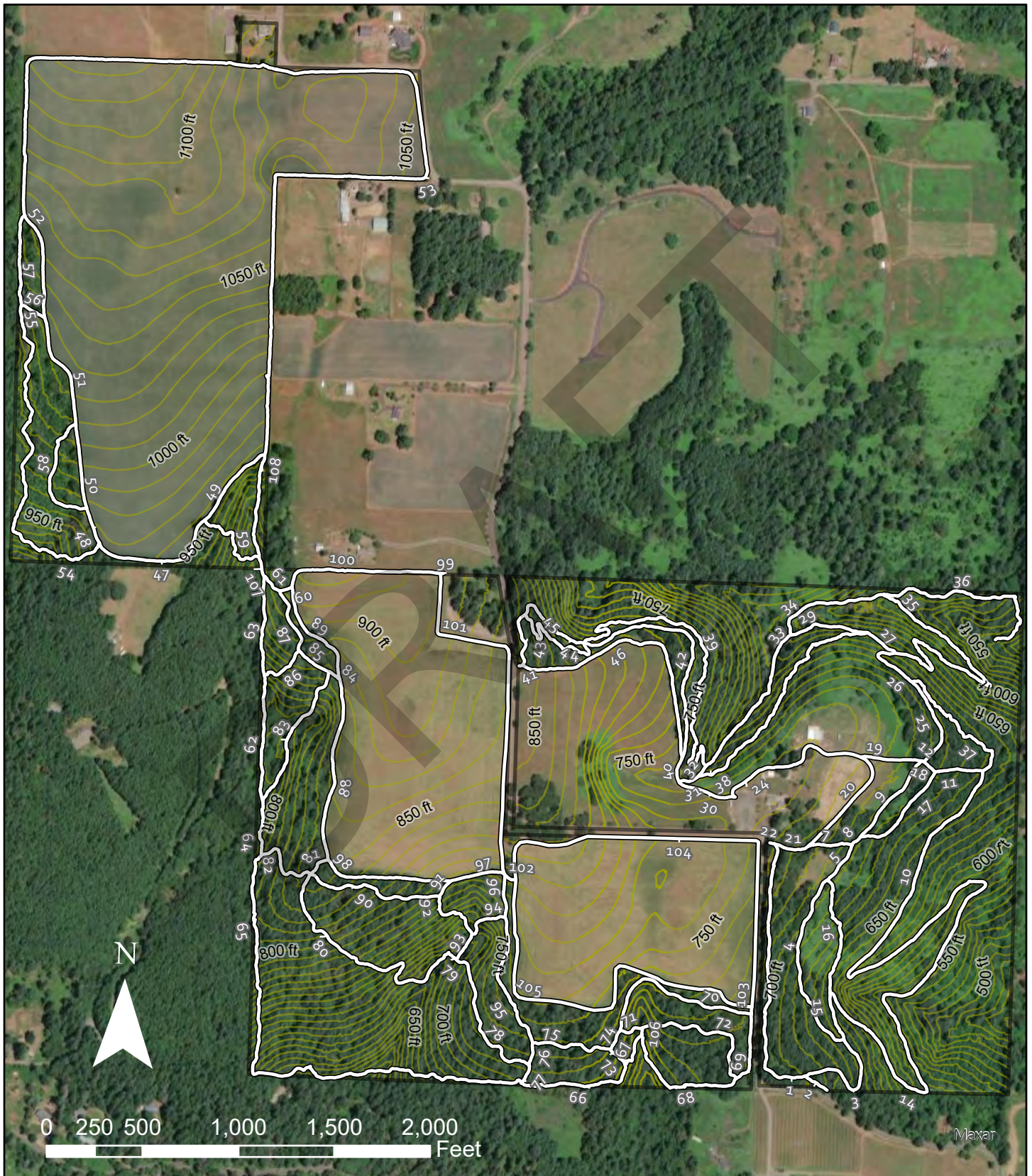
| Original Trail Number | Original Beg Termini | Original End Termini | New Trail Number | New Beg Termini | New End Termini | Trail Name | Managed Use | Length (ft) | 3D Length (ft) | Map Distance (mi) | Type | Tread Surface | Tread Width (in) | Clearing Height (in) | General (Visual) Class | Pedestrian Class | Horse Class | Bicycle Class | 2007 ADA Compliance | 30ft ADA Compliance | 10ft ADA Compliance | True ADA Compliance | Avg Grade |
|-----------------------|--------------------------------------|-------------------------|------------------|-------------------------|---------------------------------------|------------|-------------|-------------|----------------|-------------------|----------------------|-----------------|------------------|----------------------|------------------------|------------------|-------------|---------------|---------------------|---------------------|---------------------|---------------------|-----------|
| 1 | Trail #14 | Trail #2 JCT Trail #3 | 1 | Trail #21 JCT Trail #22 | Trail #2 JCT Trail #3 | N/A | Pedestrian | 1436.918136 | 1450.492625 | 0.27 | Standard Terra Trail | Dirt | 67 | 144 | 4 | 4 | 4 | 4 | PASS | FAIL | FAIL | FAIL | 3.69% |
| 2 | Trail #1 JCT Trail #3 | | 2 | Trail #1 JCT Trail #3 | | N/A | Pedestrian | 139.0798471 | 139.8250249 | 0.03 | Standard Terra Trail | Natural Surface | 70 | N/A | 1 | 2 | 2 | 1 | PASS | FAIL | FAIL | FAIL | 1.99% |
| 3 | Trail #1 JCT Trail #2 | Trail #4 JCT Trail #9 | 3 | Trail #1 JCT Trail #2 | Trail #4 JCT Trail #15 | N/A | Pedestrian | 628.0319815 | 638.8465983 | 0.12 | Standard Terra Trail | Dirt | 48 | N/A | 4 | 4 | 4 | 4 | FAIL | FAIL | FAIL | FAIL | 7.45% |
| 4 | Trail #3 JCT Trail #9 | Trail #5 JCT Trail #6 | 4 | Trail #3 JCT Trail #15 | Trail #5 JCT Trail #16 | N/A | Pedestrian | 997.6770406 | 1001.049201 | 0.19 | Standard Terra Trail | Dirt | 44 | N/A | 4 | 4 | 4 | 4 | FAIL | FAIL | FAIL | FAIL | 8.56% |
| 4 | Trail #3 JCT Trail #9 | Trail #5 JCT Trail #6 | 5 | Trail #4 JCT Trail #16 | Trail #7 JCT Trail #8 | N/A | Pedestrian | 230.9225426 | 231.2410873 | 0.04 | Standard Terra Trail | Dirt | 44 | N/A | 4 | 4 | 4 | 4 | PASS | PASS | FAIL | FAIL | 6.03% |
| 5 | Trail #4 JCT Trail #6 | Trail #13 JCT Trail #14 | 7 | Trail #5 JCT Trail #8 | Trail #20 JCT Trail #21 | N/A | Pedestrian | 235.120763 | 238.404282 | 0.04 | Standard Terra Trail | Dirt | 31 | N/A | 4 | 4 | 4 | 4 | FAIL | FAIL | FAIL | FAIL | 9.62% |
| 6 | Trail #4 JCT Trail #5 | Trail #7 JCT Trail #16 | 8 | Trail #5 JCT Trail #7 | Trail #9 JCT Trail #17 | N/A | Pedestrian | 62.28820247 | 64.57480021 | 0.01 | Standard Terra Trail | Dirt | 52 | N/A | 4 | 4 | 4 | 4 | PASS | FAIL | FAIL | FAIL | 3.61% |
| 6 | Trail #4 JCT Trail #5 | Trail #7 JCT Trail #16 | 9 | Trail #8 JCT Trail #17 | Trail #18 JCT Trail #19 | N/A | Pedestrian | 520.8188305 | 522.7267263 | 0.10 | Standard Terra Trail | Dirt | 52 | N/A | 4 | 4 | 4 | 4 | PASS | FAIL | FAIL | FAIL | 7.97% |
| 7 | Trail #6 JCT Trail #12 JCT Trail #16 | Trail #8 | 10 | Trail #11 JCT Trail #37 | Trail #14 | N/A | Pedestrian | 3667.87366 | 3683.486811 | 0.69 | Standard Terra Trail | Dirt | 42 | N/A | 4 | 4 | 4 | 4 | FAIL | FAIL | FAIL | FAIL | 5.96% |
| 7 | Trail #6 JCT Trail #12 JCT Trail #16 | Trail #8 | 11 | Trail #12 JCT Trail #17 | Trail #10 JCT Trail #37 | N/A | Pedestrian | 247.667605 | 249.4712162 | 0.05 | Standard Terra Trail | Dirt | 42 | N/A | 4 | 4 | 4 | 4 | FAIL | FAIL | FAIL | FAIL | 0.13% |
| 7 | Trail #6 JCT Trail #12 JCT Trail #16 | Trail #8 | 12 | Trail #18 JCT Trail #25 | Trail #11 JCT Trail #17 | N/A | Pedestrian | 79.41838928 | 86.62470039 | 0.02 | Standard Terra Trail | Dirt | 42 | N/A | 4 | 4 | 3 | 2 | PASS | FAIL | FAIL | FAIL | 11.83% |
| 8 | Trail #7 | Trail #9 JCT Trail #10 | 14 | Trail #10 | Trail #15 JCT Trail #16 | N/A | Pedestrian | 770.3059531 | 776.726613 | 0.15 | Standard Terra Trail | Dirt | 47 | N/A | 4 | 4 | 3 | 2 | FAIL | FAIL | FAIL | FAIL | 10.97% |
| 9 | Trail #8 JCT Trail #10 | Trail #3 JCT Trail #4 | 15 | Trail #14 JCT Trail #16 | Trail #3 JCT Trail #4 | N/A | Pedestrian | 265.8232065 | 269.1666436 | 0.05 | Standard Terra Trail | Dirt | 66 | N/A | 4 | 4 | 4 | 4 | PASS | FAIL | FAIL | FAIL | 7.23% |
| 10 | Trail #8 JCT Trail #9 | Trail #4 | 16 | Trail #14 JCT Trail #15 | Trail #4 JCT Trail #5 | N/A | Pedestrian | 655.9732573 | 665.9536128 | 0.12 | Standard Terra Trail | Natural Surface | N/A | N/A | 1 | 1 | 2 | 1 | FAIL | FAIL | FAIL | FAIL | 12.77% |
| 11 | Trail #6 | Trail #7 | 17 | Trail #8 JCT Trail #9 | Trail #11 JCT Trail #12 | N/A | Pedestrian | 559.8986685 | 564.0739183 | 0.11 | Standard Terra Trail | Dirt | 22 | 100 | 3 | 4 | 3 | 3 | FAIL | FAIL | FAIL | FAIL | 6.77% |
| 11 | Trail #6 | Trail #7 | 18 | Trail #12 JCT Trail #25 | Trail #9 JCT Trail #19 | N/A | Pedestrian | 12.80867274 | 12.99121008 | 0.00 | Standard Terra Trail | Dirt | 42 | N/A | 3 | 3 | 3 | 3 | PASS | PASS | PASS | FAIL | 11.24% |
| 12 | Trail #6 JCT Trail #7 JCT Trail #15 | Trail #13 JCT Trail #15 | 19 | Trail #18 JCT Trail #9 | Trail #20 JCT Trail #24 | N/A | Pedestrian | 320.8899018 | 321.8700318 | 0.06 | Standard Terra Trail | Natural Surface | 58 | N/A | 3 | 3 | 3 | 3 | FAIL | FAIL | FAIL | FAIL | 10.25% |
| 13 | Trail #12 JCT Trail #15 | Trail #5 JCT Trail #14 | 20 | Trail #19 JCT Trail #24 | Trail #7 JCT Trail #21 | N/A | Pedestrian | 617.4944753 | 619.0879678 | 0.12 | Standard Terra Trail | Gravel | 120 | N/A | 5 | 5 | 4 | 5 | PASS | FAIL | FAIL | FAIL | 3.68% |
| 14 | Trail #5 JCT Trail #13 | Parrett Mountain Road | 21 | Trail #7 JCT Trail #20 | Trail #1 JCT Trail #22 | N/A | Pedestrian | 186.5265533 | 187.365128 | 0.04 | Standard Terra Trail | Gravel | 120 | N/A | 5 | 4 | 4 | 4 | PASS | FAIL | FAIL | FAIL | 8.31% |
| 14 | Trail #5 JCT Trail #13 | Parrett Mountain Road | 22 | Trail #1 JCT Trail #21 | Old Parrett Mountain Road | N/A | Pedestrian | 24.9301887 | 25.04488187 | 0.00 | Standard Terra Trail | Gravel | 120 | N/A | 5 | 3 | 3 | 3 | PASS | PASS | FAIL | FAIL | 14.14% |
| 15 | Parking Lot | Trail #12 JCT Trail #13 | 24 | Parking Lot | Trail #19 JCT Trail #20 | N/A | Pedestrian | 827.9351076 | 1094.01844 | 0.16 | Standard Terra Trail | Gravel | 120 | N/A | 5 | 5 | 4 | 5 | PASS | FAIL | FAIL | FAIL | 3.54% |
| 16 | Trail #6 JCT Trail #7 JCT Trail #12 | Trail #17 JCT Trail #21 | 25 | Trail #12 JCT Trail #18 | Trail #26 JCT Trail #37 | N/A | Pedestrian | 502.0397773 | 504.0917586 | 0.10 | Standard Terra Trail | Dirt | 62 | N/A | 4 | 4 | 4 | 4 | PASS | PASS | FAIL | FAIL | 6.11% |
| 16 | Trail #6 JCT Trail #7 JCT Trail #12 | Trail #17 JCT Trail #21 | 26 | Trail #25 JCT Trail #37 | Trail #27 JCT Trail #35 | N/A | Pedestrian | 318.1535625 | 319.0493423 | 0.06 | Standard Terra Trail | Dirt | 62 | N/A | 4 | 4 | 3 | 2 | FAIL | FAIL | FAIL | FAIL | 11.00% |
| 16 | Trail #6 JCT Trail #7 JCT Trail #12 | Trail #17 JCT Trail #21 | 27 | Trail #26 JCT Trail #35 | Trail #29 JCT Trail #38 | N/A | Pedestrian | 182.60829 | 184.3596885 | 0.03 | Standard Terra Trail | Dirt | 62 | N/A | 4 | 4 | 3 | 2 | PASS | FAIL | FAIL | FAIL | 12.54% |
| 17 | Trail #16 JCT Trail #21 | Trail #19 JCT Trail #26 | 29 | Trail #27 JCT Trail #38 | Trail #33 JCT Trail #34 | N/A | Pedestrian | 422.3220416 | 425.5018678 | 0.08 | Standard Terra Trail | Dirt | 23 | N/A | 4 | 4 | 3 | 3 | FAIL | FAIL | FAIL | FAIL | 8.12% |
| 18 | Parking Lot | Trail #19 JCT Trail #26 | 30 | Parking Lot | Trail #31 JCT Trail #40 | N/A | Pedestrian | 307.8304113 | 308.3062928 | 0.06 | Standard Terra Trail | Dirt | 125 | N/A | 5 | 5 | 4 | 5 | FAIL | FAIL | PASS | FAIL | 1.31% |
| 19 | Trail #18 JCT Trail #26 | Trail #17 JCT Trail #20 | 31 | Trail #30 JCT Trail #40 | Trail #32 JCT Trail #38 | N/A | Pedestrian | 112.510212 | 112.6306776 | 0.02 | Standard Terra Trail | Dirt | 36 | N/A | 4 | 4 | 3 | 3 | PASS | FAIL | FAIL | FAIL | 6.23% |
| 19 | Trail #18 JCT Trail #26 | Trail #17 JCT Trail #20 | 32 | Trail #31 JCT Trail #38 | Trail #33 JCT Trail #39 | N/A | Pedestrian | 63.43294712 | 63.66256423 | 0.01 | Standard Terra Trail | Dirt | 36 | N/A | 3 | 3 | 2 | 2 | PASS | FAIL | FAIL | FAIL | 19.68% |
| 19 | Trail #18 JCT Trail #26 | Trail #17 JCT Trail #20 | 33 | Trail #32 JCT Trail #39 | Trail #29 JCT Trail #34 | N/A | Pedestrian | 861.3630566 | 865.7243282 | 0.16 | Standard Terra Trail | Dirt | 36 | N/A | 4 | 4 | 3 | 3 | FAIL | FAIL | FAIL | FAIL | 9.66% |
| 20 | Trail #17 JCT Trail #19 | Trail #21 JCT Trail #22 | 34 | Trail #29 JCT Trail #33 | Trail #35 JCT Trail #36 | N/A | Pedestrian | 618.1727938 | 624.7936208 | 0.12 | Standard Terra Trail | Dirt | 54 | N/A | 3 | 3 | 3 | 3 | FAIL | FAIL | FAIL | FAIL | 11.27% |
| 21 | Trail #20 JCT Trail #22 | Trail #16 JCT Trail #17 | 35 | Trail #34 JCT Trail #36 | Trail #26 JCT Trail #27 | N/A | Pedestrian | 1670.775713 | 1684.927721 | 0.32 | Standard Terra Trail | Dirt | 57 | 91 | 3 | 3 | 3 | 3 | FAIL | FAIL | FAIL | FAIL | 9.07% |
| 22 | Trail #20 JCT Trail #21 | | 36 | Trail #34 JCT Trail #35 | | N/A | Pedestrian | 1071.162375 | 1082.499853 | 0.20 | Standard Terra Trail | Dirt | 53 | 84 | 3 | 3 | 3 | 2 | FAIL | FAIL | FAIL | FAIL | 13.80% |
| 23 | Trail #16 | Trail #7 | 37 | Trail #25 JCT Trail #26 | Trail #10 JCT Trail #11 | N/A | Bicycle | 763.2844758 | 775.1043883 | 0.14 | Standard Terra Trail | Dirt | 12 | 83 | 3 | 2 | 2 | 2 | PASS | FAIL | FAIL | FAIL | 9.05% |
| 24 | Trail #17 | Trail #19 | 38 | Trail #27 JCT Trail #29 | Trail #31 JCT Trail #32 | N/A | Bicycle | 1320.671565 | 1345.370152 | 0.25 | Standard Terra Trail | Dirt | 14 | 99 | 2 | 2 | 2 | 3 | FAIL | FAIL | FAIL | FAIL | 7.75% |
| 25 | Trail #19 | Trail #26 JCT Trail #27 | 39 | Trail #32 JCT Trail #33 | Trail #42 JCT Trail #44 JCT Trail #45 | N/A | Bicycle | 1826.635736 | 1840.928721 | 0.35 | Standard Terra Trail | Dirt | 13 | 91 | 2 | 2 | 2 | 3 | FAIL | FAIL | FAIL | FAIL | 5.92% |
| 26 | Trail #18 JCT Trail #19 | Parrett Mountain Road | 40 | Trail #30 JCT Trail #31 | Trail #42 JCT Trail #46 | N/A | Pedestrian | 133.22213 | 136.2884395 | 0.03 | Standard Terra Trail | Dirt | 39 | N/A | 4 | 4 | 4 | 4 | PASS | FAIL | FAIL | FAIL | 6.44% |

| Original Trail Number | Original Beg Termini | Original End Termini | New Trail Number | New Beg Termini | New End Termini | Trail Name | Managed Use | Length (ft) | 3D Length (ft) | Map Distance (mi) | Type | Tread Surface | Tread Width (in) | Clearing Height (in) | General (Visual) Class | Pedestrian Class | Horse Class | Bicycle Class | 200ft ADA Compliance | 30ft ADA Compliance | 10ft ADA Compliance | True ADA Compliance | Avg Grade |
|-----------------------|-------------------------|-------------------------|------------------|---------------------------|---------------------------------------|--|-------------|-------------|----------------|-------------------|----------------------|-----------------|------------------|----------------------|------------------------|------------------|-------------|---------------|----------------------|---------------------|---------------------|---------------------|-----------|
| 26 | Trail #13 JCT Trail #19 | Parrett Mountain Road | 41 | Old Parrett Mountain Road | Trail #43 JCT Trail #46 | N/A | Pedestrian | 23.20933183 | 23.32263818 | 0.00 | Standard Terra Trail | Dirt | 39 | N/A | 4 | 4 | 4 | 4 | PASS | PASS | PASS | FAIL | 6.06% |
| 26 | Trail #18 JCT Trail #19 | Parrett Mountain Road | 42 | Trail #40 JCT Trail #46 | Trail #39 JCT Trail #44 JCT Trail #45 | N/A | Pedestrian | 1259.797968 | 1267.011622 | 0.24 | Standard Terra Trail | Dirt | 39 | N/A | 4 | 4 | 4 | 4 | FAIL | FAIL | FAIL | FAIL | 4.99% |
| 26 | Trail #18 JCT Trail #19 | Parrett Mountain Road | 43 | Trail #41 JCT Trail #46 | Trail #44 JCT Trail #45 | N/A | Pedestrian | 294.3469556 | 295.9903736 | 0.06 | Standard Terra Trail | Dirt | 39 | N/A | 4 | 4 | 4 | 4 | PASS | FAIL | FAIL | FAIL | 5.64% |
| 26 | Trail #18 JCT Trail #19 | Parrett Mountain Road | 44 | Trail #43 JCT Trail #45 | Trail #39 JCT Trail #42 JCT Trail #45 | N/A | Pedestrian | 433.8588559 | 437.7465463 | 0.08 | Standard Terra Trail | Dirt | 39 | N/A | 4 | 4 | 4 | 4 | FAIL | FAIL | FAIL | FAIL | 3.32% |
| 27 | Trail #26 | Trail #25 JCT Trail #26 | 45 | Trail #43 JCT Trail #44 | Trail #39 JCT Trail #42 JCT Trail #44 | N/A | Bicycle | 669.8873592 | 676.2679255 | 0.13 | Standard Terra Trail | Dirt | 14 | 84 | 3 | 2 | 2 | 2 | FAIL | FAIL | FAIL | FAIL | 10.32% |
| 28 | Trail #26 | Trail #26 | 46 | Trail #41 JCT Trail #43 | Trail #40 JCT Trail #45 | N/A | Pedestrian | 1396.002627 | 1402.37137 | 0.26 | Standard Terra Trail | Grass | 42 | 129 | 2 | 3 | 3 | 2 | FAIL | FAIL | FAIL | FAIL | 8.96% |
| 29 | Trail #74 | Trail #74 | 47 | Trail #49 JCT Trail #59 | Trail #48 JCT Trail #54 | Burt's 80 Field Loop | Pedestrian | 712.8696341 | 713.3784402 | 0.14 | Standard Terra Trail | Grass | 57 | N/A | 2 | 3 | 3 | 2 | PASS | PASS | FAIL | FAIL | 4.94% |
| 29 | Trail #74 | Trail #74 | 48 | Trail #47 JCT Trail #54 | Trail #50 JCT Trail #58 | Burt's 80 Field Loop | Pedestrian | 195.8078724 | 195.9714129 | 0.04 | Standard Terra Trail | Grass | 57 | N/A | 2 | 3 | 3 | 2 | PASS | PASS | PASS | FAIL | 5.37% |
| 29 | Trail #74 | Trail #74 | 49 | Trail #53 JCT Trail #108 | Trail #47 JCT Trail #59 | Burt's 80 Field Loop | Pedestrian | 477.4931324 | 478.1636679 | 0.09 | Standard Terra Trail | Grass | 57 | N/A | 2 | 3 | 3 | 2 | PASS | PASS | FAIL | FAIL | 6.00% |
| 29 | Trail #74 | Trail #74 | 50 | Trail #48 JCT Trail #58 | Trail #51 JCT Trail #58 | Burt's 80 Field Loop | Pedestrian | 444.3520024 | 444.6868061 | 0.08 | Standard Terra Trail | Grass | 57 | N/A | 2 | 3 | 3 | 2 | FAIL | FAIL | FAIL | FAIL | 9.96% |
| 29 | Trail #74 | Trail #74 | 51 | Trail #50 JCT Trail #58 | Trail #52 JCT Trail #56 | Burt's 80 Field Loop | Pedestrian | 598.8210297 | 599.1365194 | 0.11 | Standard Terra Trail | Grass | 57 | N/A | 2 | 3 | 3 | 2 | PASS | FAIL | FAIL | FAIL | 6.30% |
| 29 | Trail #74 | Trail #74 | 52 | Trail #51 JCT Trail #56 | Trail #53 JCT Trail #57 | Burt's 80 Field Loop | Pedestrian | 562.9391773 | 563.3092693 | 0.11 | Standard Terra Trail | Grass | 57 | N/A | 2 | 3 | 3 | 2 | FAIL | FAIL | FAIL | FAIL | 8.16% |
| 29 | Trail #74 | Trail #74 | 53 | Trail #52 JCT Trail #57 | Trail #49 JCT Trail #108 | Burt's 80 Field Loop | Pedestrian | 5664.887119 | 5674.734022 | 1.07 | Standard Terra Trail | Grass | 57 | N/A | 2 | 3 | 3 | 2 | FAIL | FAIL | FAIL | FAIL | 6.04% |
| 30 | Trail #29 | Trail #31 | 54 | Trail #47 JCT Trail #58 | Trail #55 | Donald T. Everest Family Heritage Trail | Horse | 1715.922599 | 1729.207818 | 0.32 | Standard Terra Trail | Natural Surface | 12 | 78 | 1 | 2 | 2 | 1 | FAIL | FAIL | FAIL | FAIL | 12.97% |
| 31 | Trail #30 | Trail #29 | 55 | Trail #54 | Trail #56 JCT Trail #57 | Doddlid T. Everest Family Heritage Trail | Horse | 167.6021245 | 168.6668555 | 0.03 | Standard Terra Trail | Dirt | 57 | N/A | 3 | 3 | 3 | 3 | FAIL | FAIL | FAIL | FAIL | 3.09% |
| 31 | Trail #30 | Trail #29 | 56 | Trail #55 JCT Trail #57 | Trail #51 JCT Trail #52 | N/A | Horse | 141.847108 | 142.7367991 | 0.03 | Standard Terra Trail | Dirt | 57 | N/A | 3 | 3 | 3 | 3 | PASS | FAIL | FAIL | FAIL | 3.62% |
| 32 | Trail #31 | Trail #29 | 57 | Trail #55 JCT Trail #56 | Trail #52 JCT Trail #53 | Donald T. Everest Family Heritage Trail | Horse | 487.3842831 | 490.0095735 | 0.09 | Standard Terra Trail | Dirt | 13 | N/A | 3 | 3 | 3 | 3 | FAIL | FAIL | FAIL | FAIL | 3.60% |
| 33 | Trail #29 | Trail #29 | 58 | Trail #50 JCT Trail #51 | Trail #48 JCT Trail #50 | Linda Vista | Pedestrian | 654.0381952 | 657.4660644 | 0.12 | Standard Terra Trail | Natural Surface | 39 | 107 | 3 | 3 | 2 | 2 | FAIL | FAIL | FAIL | FAIL | 10.33% |
| 34 | Trail #29 | Trail #74 | 59 | Trail #47 JCT Trail #49 | Trail #107 JCT Trail #108 | N/A | Horse | 464.5162985 | 475.5237808 | 0.09 | Standard Terra Trail | Dirt | 10 | N/A | 1 | 1 | 2 | 1 | FAIL | FAIL | FAIL | FAIL | 21.63% |
| 35 | Trail #36 JCT Trail #74 | Trail #59 JCT Trail #68 | 60 | Trail #89 JCT Trail #100 | Trail #61 JCT Trail #87 | N/A | Pedestrian | 67.55707111 | 67.82643082 | 0.01 | Standard Terra Trail | Dirt | 59 | N/A | 4 | 4 | 4 | 4 | PASS | FAIL | FAIL | FAIL | 4.60% |
| 35 | Trail #36 JCT Trail #74 | Trail #59 JCT Trail #68 | 61 | Trail #60 JCT Trail #87 | Trail #63 JCT Trail #107 | N/A | Pedestrian | 115.0230418 | 119.5225736 | 0.02 | Standard Terra Trail | Dirt | 59 | N/A | 4 | 4 | 3 | 2 | FAIL | FAIL | FAIL | FAIL | 15.63% |
| 36 | Trail #35 JCT Trail #74 | Trail #37 JCT Trail #55 | 62 | Trail #65 JCT Trail #82 | Trail #63 JCT Trail #86 | Forest Lower Loop | Pedestrian | 670.9519936 | 674.8922621 | 0.13 | Standard Terra Trail | Dirt | 21 | N/A | 3 | 3 | 3 | 3 | FAIL | FAIL | FAIL | FAIL | 5.95% |
| 36 | Trail #35 JCT Trail #74 | Trail #37 JCT Trail #55 | 63 | Trail #62 JCT Trail #86 | Trail #61 JCT Trail #107 | Forest Lower Loop | Pedestrian | 525.9660245 | 528.4458864 | 0.10 | Standard Terra Trail | Dirt | 21 | N/A | 3 | 3 | 3 | 3 | FAIL | FAIL | FAIL | FAIL | 5.73% |
| 37 | Trail #36 JCT Trail #55 | Trail #39 JCT Trail #54 | 64 | Trail #62 JCT Trail #83 | Trail #65 JCT Trail #82 | Forest Lower Loop | Pedestrian | 293.4350095 | 297.8586091 | 0.06 | Standard Terra Trail | Dirt | 26 | N/A | 3 | 3 | 3 | 3 | FAIL | FAIL | FAIL | FAIL | 12.11% |
| 39 | Trail #37 JCT Trail #54 | Trail #40 JCT Trail #50 | 65 | Trail #64 JCT Trail #82 | Trail #66 JCT Trail #77 | Curtis' Lower Loop | Pedestrian | 2741.62646 | 3112.710614 | 0.52 | Standard Terra Trail | Dirt | 23 | 77 | 2 | 2 | 2 | 2 | FAIL | FAIL | FAIL | FAIL | 13.58% |
| 40 | Trail #39 JCT Trail #50 | Trail #41 JCT Trail #73 | 66 | Trail #65 JCT Trail #77 | Trail #67 JCT Trail #73 | N/A | Pedestrian | 633.1563512 | 636.8885678 | 0.12 | Standard Terra Trail | Dirt | 34 | N/A | 3 | 3 | 3 | 3 | PASS | FAIL | FAIL | FAIL | 5.69% |
| 40 | Trail #39 JCT Trail #50 | Trail #41 JCT Trail #73 | 67 | Trail #66 JCT Trail #73 | Trail #68 JCT Trail #106 | N/A | Pedestrian | 197.360114 | 199.5058411 | 0.04 | Standard Terra Trail | Dirt | 34 | N/A | 3 | 3 | 3 | 3 | PASS | FAIL | FAIL | FAIL | 8.57% |
| 41 | Trail #40 JCT Trail #73 | Trail #42 JCT Trail #45 | 68 | Trail #67 JCT Trail #106 | Trail #69 JCT Trail #72 | N/A | Pedestrian | 712.6430381 | 718.5165234 | 0.13 | Standard Terra Trail | Dirt | 45 | N/A | 3 | 3 | 3 | 3 | FAIL | FAIL | FAIL | FAIL | 8.24% |
| 42 | Trail #41 JCT Trail #45 | Trail #43 JCT Trail #71 | 69 | Trail #68 JCT Trail #72 | Trail #70 JCT Trail #103 | N/A | Pedestrian | 377.9016741 | 387.2287461 | 0.07 | Standard Terra Trail | Dirt | 28 | N/A | 3 | 3 | 3 | 3 | PASS | PASS | PASS | FAIL | 4.59% |
| 43 | Trail #42 JCT Trail #47 | Trail #44 JCT Trail #47 | 70 | Trail #69 JCT Trail #103 | Trail #71 JCT Trail #74 | N/A | Pedestrian | 925.021828 | 927.1581812 | 0.18 | Standard Terra Trail | Dirt | 21 | 102 | 3 | 3 | 3 | 3 | PASS | FAIL | FAIL | FAIL | 6.48% |
| 44 | Trail #43 JCT Trail #47 | Trail #45 JCT Trail #73 | 71 | Trail #70 JCT Trail #74 | Trail #72 JCT Trail #106 | N/A | Pedestrian | 133.3878685 | 523.0746702 | 0.03 | Standard Terra Trail | Dirt | 29 | N/A | 3 | 3 | 3 | 3 | FAIL | FAIL | FAIL | FAIL | 4.65% |
| 45 | Trail #44 JCT Trail #73 | Trail #41 JCT Trail #42 | 72 | Trail #71 JCT Trail #106 | Trail #68 JCT Trail #69 | Confession Trail | Pedestrian | 752.9342892 | 756.4874605 | 0.14 | Standard Terra Trail | Dirt | 25 | N/A | 3 | 3 | 3 | 3 | FAIL | FAIL | FAIL | FAIL | 10.52% |
| 46 | Trail #40 | Trail #47 JCT Trail #48 | 73 | Trail #66 JCT Trail #67 | Trail #74 JCT Trail #75 | N/A | Pedestrian | 113.4756297 | 114.5378468 | 0.02 | Standard Terra Trail | Dirt | 12 | N/A | 2 | 2 | 2 | 1 | FAIL | FAIL | FAIL | FAIL | 18.99% |
| 47 | Trail #46 JCT Trail #48 | Trail #43 JCT Trail #44 | 74 | Trail #73 JCT Trail #75 | Trail #70 JCT Trail #71 | N/A | Pedestrian | 112.8869086 | 297.3110331 | 0.02 | Standard Terra Trail | Dirt | 38 | N/A | 3 | 3 | 3 | 3 | PASS | PASS | FAIL | FAIL | 6.26% |
| 48 | Trail #46 JCT Trail #47 | Trail #49 JCT Trail #65 | 75 | Trail #73 JCT Trail #74 | Trail #76 JCT Trail #95 | N/A | Pedestrian | 441.7553252 | 453.6172547 | 0.08 | Standard Terra Trail | Dirt | 30 | 98 | 3 | 3 | 2 | 3 | FAIL | FAIL | FAIL | FAIL | 8.40% |
| 49 | Trail #48 JCT Trail #65 | Trail #50 JCT Trail #51 | 76 | Trail #75 JCT Trail #95 | Trail #77 JCT Trail #78 | N/A | Pedestrian | 126.3890893 | 127.7509928 | 0.02 | Standard Terra Trail | Dirt | 56 | N/A | 3 | 3 | 2 | 2 | PASS | FAIL | FAIL | FAIL | 12.52% |
| 50 | Trail #49 JCT Trail #50 | Trail #39 JCT Trail #40 | 77 | Trail #76 JCT Trail #78 | Trail #65 JCT Trail #66 | N/A | Pedestrian | 100.6421805 | 104.8394964 | 0.02 | Standard Terra Trail | Dirt | 44 | N/A | 3 | 3 | 2 | 2 | PASS | FAIL | FAIL | FAIL | 12.24% |
| 51 | Trail #49 JCT Trail #50 | Trail #52 | 78 | Trail #76 JCT Trail #77 | Trail #79 JCT Trail #93 | Bobcat Trail | Pedestrian | 799.6346005 | 805.9134891 | 0.15 | Standard Terra Trail | Dirt | 33 | N/A | 3 | 3 | 2 | 2 | FAIL | FAIL | FAIL | FAIL | 12.51% |

| Original Trail Number | Original Beg Termini | Original End Termini | New Trail Number | New Beg Termini | New End Termini | Trail Name | Managed Use | Length (ft) | 3D Length (ft) | Map Distance (mi) | Type | Tread Surface | Tread Width (in) | Clearing Height (in) | General (Visual) Class | Pedestrian Class | Horse Class | Bicycle Class | 200ft ADA Compliance | 30ft ADA Compliance | 10ft ADA Compliance | True ADA Compliance | Avg Grade |
|-----------------------|---------------------------------------|---------------------------------------|------------------|---|---|---------------------|-------------|-------------|----------------|-------------------|----------------------|-----------------|------------------|----------------------|------------------------|------------------|-------------|---------------|----------------------|---------------------|---------------------|---------------------|-----------|
| 51 | Trail #49 JCT Trail #50 | | 79 | Trail #78 JCT Trail #93 | Trail #80 | Bobcat Trail | Pedestrian | 55.77994134 | 63.93145778 | 0.01 | Standard Terra Trail | Dirt | 33 | N/A | 3 | 2 | 2 | 1 | PASS | FAIL | FAIL | FAIL | 16.19% |
| 52 | Trail #51 | Trail #53 JCT Trail #54 JCT Trail #60 | 80 | Trail #79 | Trail #81 JCT Trail #82 JCT Trail #90 | The Bottom Loop | Pedestrian | 1349.581155 | 1363.053879 | 0.26 | Standard Terra Trail | Dirt | 14 | 96 | 3 | 2 | 2 | 1 | FAIL | FAIL | FAIL | FAIL | 10.48% |
| 53 | Trail #52 JCT Trail #54 JCT Trail #60 | Trail #59 JCT Trail #67 | 81 | Trail #80 JCT Trail #82 JCT Trail #90 | Trail #88 JCT Trail #98 | BA Way | Pedestrian | 132.1670172 | 133.3692034 | 0.03 | Standard Terra Trail | Dirt | 15 | N/A | 4 | 3 | 3 | 3 | PASS | PASS | PASS | FAIL | 2.69% |
| 54 | Trail #52 JCT Trail #53 JCT Trail #60 | Trail #37 JCT Trail #39 | 82 | Trail #80 JCT Trail #81 JCT Trail #90 | Trail #64 JCT Trail #65 | Parret's Upper Loop | Pedestrian | 388.8556434 | 403.9857128 | 0.07 | Standard Terra Trail | Dirt | 24 | N/A | 3 | 3 | 2 | 2 | FAIL | FAIL | FAIL | FAIL | 13.71% |
| 55 | Trail #36 JCT Trail #37 | Trail #56 | 83 | Trail #62 JCT Trail #64 | Trail #84 JCT Trail #85 | Kimball Creek Trail | Pedestrian | 808.5671794 | 816.9494198 | 0.15 | Standard Terra Trail | Dirt | 35 | N/A | 3 | 3 | 3 | 3 | FAIL | FAIL | FAIL | FAIL | 4.06% |
| 56 | Trail #57 JCT Trail #58 | Trail #57 JCT Trail #58 | 84 | Trail #88 JCT Trail #89 | Trail #83 JCT Trail #85 | N/A | Pedestrian | 66.15449339 | 72.4542417 | 0.01 | Standard Terra Trail | Dirt | 39 | N/A | 3 | 3 | 3 | 3 | PASS | PASS | FAIL | FAIL | 8.05% |
| 56 | Trail #59 | Trail #57 JCT Trail #58 | 85 | Trail #83 JCT Trail #84 | Trail #86 JCT Trail #87 | N/A | Pedestrian | 196.9304456 | 198.4166415 | 0.04 | Standard Terra Trail | Dirt | 39 | N/A | 3 | 3 | 3 | 3 | PASS | FAIL | FAIL | FAIL | 4.86% |
| 57 | Trail #56 JCT Trail #58 | Trail #36 | 86 | Trail #85 JCT Trail #87 | Trail #62 JCT Trail #63 | Forest Upper Loop | Pedestrian | 259.7326597 | 262.8412654 | 0.05 | Standard Terra Trail | Dirt | 12 | 102 | 2 | 1 | 2 | 1 | FAIL | FAIL | FAIL | FAIL | 22.60% |
| 58 | Trail #56 JCT Trail #57 | Trail #35 | 87 | Trail #85 JCT Trail #86 | Trail #60 JCT Trail #61 | Ed Casey's Way | Pedestrian | 357.8660639 | 358.5880346 | 0.07 | Standard Terra Trail | Dirt | 16 | N/A | 3 | 2 | 2 | 2 | FAIL | FAIL | FAIL | FAIL | 3.65% |
| 59 | Trail #35 JCT Trail #68 | Trail #53 JCT Trail #67 | 88 | Trail #81 JCT Trail #90 | Trail #84 JCT Trail #89 | Dani's Field Loop | Pedestrian | 969.4434071 | 970.0043242 | 0.18 | Standard Terra Trail | Dirt | 61 | N/A | 3 | 4 | 3 | 3 | PASS | FAIL | FAIL | FAIL | 4.76% |
| 59 | Trail #35 JCT Trail #68 | Trail #53 JCT Trail #67 | 89 | Trail #84 JCT Trail #88 | Trail #60 JCT Trail #100 | Dani's Field Loop | Pedestrian | 585.805749 | 586.9364104 | 0.11 | Standard Terra Trail | Dirt | 61 | N/A | 3 | 4 | 3 | 3 | FAIL | FAIL | FAIL | FAIL | 7.95% |
| 60 | Trail #52 JCT Trail #53 JCT Trail #54 | Trail #61 JCT Trail #62 | 90 | Trail #80 JCT Trail #81 JCT Trail #82 | Trail #91 JCT Trail #92 | Willard's Way | Pedestrian | 750.4582317 | 976.780153 | 0.14 | Standard Terra Trail | Dirt | 13 | N/A | 3 | 3 | 3 | 2 | FAIL | FAIL | FAIL | FAIL | 11.14% |
| 61 | Trail #60 JCT Trail #67 | Trail #66 JCT Trail #67 | 91 | Trail #90 JCT Trail #92 | Trail #97 JCT Trail #98 | N/A | Pedestrian | 104.2541519 | 104.5662354 | 0.02 | Standard Terra Trail | Dirt | 67 | N/A | 4 | 4 | 4 | 4 | PASS | FAIL | FAIL | FAIL | 3.76% |
| 62 | Trail #60 JCT Trail #61 | Trail #63 JCT Trail #64 | 92 | Trail #90 JCT Trail #91 | Trail #93 JCT Trail #94 | Tomcat Trail | Pedestrian | 332.8593452 | 334.0533198 | 0.06 | Standard Terra Trail | Dirt | 8 | 36 | 2 | 1 | 2 | 1 | FAIL | FAIL | FAIL | FAIL | 21.44% |
| 63 | Trail #62 JCT Trail #64 | Trail #51 | 93 | Trail #92 JCT Trail #94 | Trail #78 JCT Trail #79 | N/A | Pedestrian | 159.2751392 | 161.7576766 | 0.03 | Standard Terra Trail | Dirt | 13 | N/A | 2 | 1 | 2 | 1 | FAIL | FAIL | FAIL | FAIL | 14.41% |
| 64 | Trail #62 JCT Trail #63 | Trail #66 JCT Trail #65 | 94 | Trail #92 JCT Trail #93 | Trail #95 JCT Trail #96 | N/A | Pedestrian | 232.5970703 | 434.632619 | 0.04 | Standard Terra Trail | Dirt | 13 | N/A | 2 | 1 | 2 | 1 | FAIL | FAIL | FAIL | FAIL | 22.75% |
| 65 | Trail #64 JCT Trail #66 | Trail #48 JCT Trail #49 | 95 | Trail #94 JCT Trail #96 | Trail #75 JCT Trail #76 | Curtis' Upper Loop | Pedestrian | 744.7227327 | 1541.902794 | 0.14 | Standard Terra Trail | Dirt | 37 | N/A | 3 | 3 | 3 | 3 | PASS | FAIL | FAIL | FAIL | 5.62% |
| 66 | Trail #64 JCT Trail #65 | Trail #61 JCT Trail #67 | 96 | Trail #94 JCT Trail #95 | Trail #97 JCT Trail #101 JCT Trail #102 | N/A | Pedestrian | 227.1017693 | 415.9037859 | 0.04 | Standard Terra Trail | Dirt | 47 | N/A | 4 | 4 | 3 | 2 | FAIL | FAIL | FAIL | FAIL | 15.10% |
| 66 | Trail #64 JCT Trail #65 | Trail #61 JCT Trail #67 | 97 | Trail #96 JCT Trail #101 JCT Trail #102 | Trail #91 JCT Trail #98 | Dani's Field Loop | Pedestrian | 289.3743844 | 289.6441154 | 0.05 | Standard Terra Trail | Natural Surface | 47 | N/A | 4 | 4 | 3 | 3 | PASS | PASS | PASS | FAIL | 4.10% |
| 67 | Trail #61 JCT Trail #66 | Trail #53 JCT Trail #59 | 98 | Trail #91 JCT Trail #98 | Trail #81 JCT Trail #88 | Dani's Field Loop | Pedestrian | 685.640143 | 688.364222 | 0.13 | Standard Terra Trail | Natural Surface | 87 | N/A | 4 | 4 | 3 | 3 | FAIL | FAIL | FAIL | FAIL | 10.12% |
| 68 | Trail #35 JCT Trail #59 | Trailhead Parking Lot | 99 | Trailhead Parking Lot | Trail #100 JCT Trail #101 | Dani's Field Loop | Pedestrian | 14.67646957 | 14.67646957 | 0.00 | Standard Terra Trail | Natural Surface | 20 | N/A | 4 | 4 | 3 | 3 | PASS | PASS | PASS | FAIL | 9.55% |
| 68 | Trail #35 JCT Trail #59 | Trailhead Parking Lot | 100 | Trail #99 JCT Trail #101 | Trail #60 JCT Trail #89 | Dani's Field Loop | Pedestrian | 841.9704159 | 844.4374758 | 0.16 | Standard Terra Trail | Natural Surface | 20 | N/A | 4 | 4 | 3 | 3 | PASS | PASS | PASS | FAIL | 4.58% |
| 69 | Trailhead Parking Lot | Trail #66 JCT Trail #70 | 101 | Trail #99 JCT Trail #100 | Trail #96 JCT Trail #97 JCT Trail #102 | Dani's Field Loop | Pedestrian | 1872.742744 | 2267.987871 | 0.35 | Standard Terra Trail | Grass | 43 | N/A | 4 | 4 | 3 | 3 | FAIL | FAIL | PASS | FAIL | 6.42% |
| 70 | Trail #66 JCT Trail #69 | Trail #71 JCT Trail #72 | 102 | Trail #96 JCT Trail #97 JCT Trail #101 | Trail #104 JCT Trail #105 | N/A | Pedestrian | 69.58844609 | 260.3123767 | 0.01 | Standard Terra Trail | Natural Surface | 60 | N/A | 4 | 4 | 3 | 3 | PASS | PASS | PASS | FAIL | 3.89% |
| 71 | Trail #70 JCT Trail #72 | Trail #42 JCT Trail #43 | 103 | Trail #69 JCT Trail #70 | Trail #104 JCT Trail #105 | N/A | Pedestrian | 36.84771587 | 218.1113119 | 0.01 | Standard Terra Trail | Dirt | 47 | N/A | 4 | 4 | 4 | 4 | PASS | PASS | PASS | FAIL | 4.53% |
| 71 | Trail #70 JCT Trail #72 | Trail #42 JCT Trail #43 | 104 | Trail #103 JCT Trail #105 | Trail #102 JCT Trail #105 | Curtis Field Loop | Pedestrian | 2320.928769 | 2320.928769 | 0.44 | Standard Terra Trail | Grass | 47 | N/A | 4 | 4 | 3 | 3 | FAIL | FAIL | FAIL | FAIL | 5.79% |
| 72 | Trail #71 | Trail #70 JCT Trail #71 | 105 | Trail #102 JCT Trail #104 | Trail #103 JCT Trail #104 | Curtis Field Loop | Pedestrian | 2096.23087 | 2096.23087 | 0.40 | Standard Terra Trail | Grass | 34 | N/A | 3 | 3 | 3 | 2 | FAIL | FAIL | FAIL | FAIL | 6.92% |
| 73 | Trail #44 JCT Trail #45 | Trail #40 JCT Trail #41 | 106 | Trail #67 JCT Trail #68 | Trail #71 JCT Trail #72 | N/A | Pedestrian | 43.29549345 | 390.6539859 | 0.01 | Standard Terra Trail | Dirt | 54 | N/A | 4 | 4 | 4 | 4 | PASS | PASS | FAIL | FAIL | 1.39% |
| 74 | Trail #35 JCT Trail #36 | Trail #29 | 107 | Trail #61 JCT Trail #63 | Trail #59 JCT Trail #108 | N/A | Pedestrian | 107.936054 | 109.8362376 | 0.02 | Standard Terra Trail | Dirt | 62 | N/A | 4 | 4 | 3 | 3 | PASS | FAIL | FAIL | FAIL | 9.82% |
| 74 | Trail #35 JCT Trail #36 | Trail #29 | 108 | Trail #59 JCT Trail #107 | Trail #49 JCT Trail #53 | N/A | Pedestrian | 550.9381773 | 553.816541 | 0.10 | Standard Terra Trail | Dirt | 62 | N/A | 4 | 4 | 3 | 2 | FAIL | FAIL | FAIL | FAIL | 13.64% |

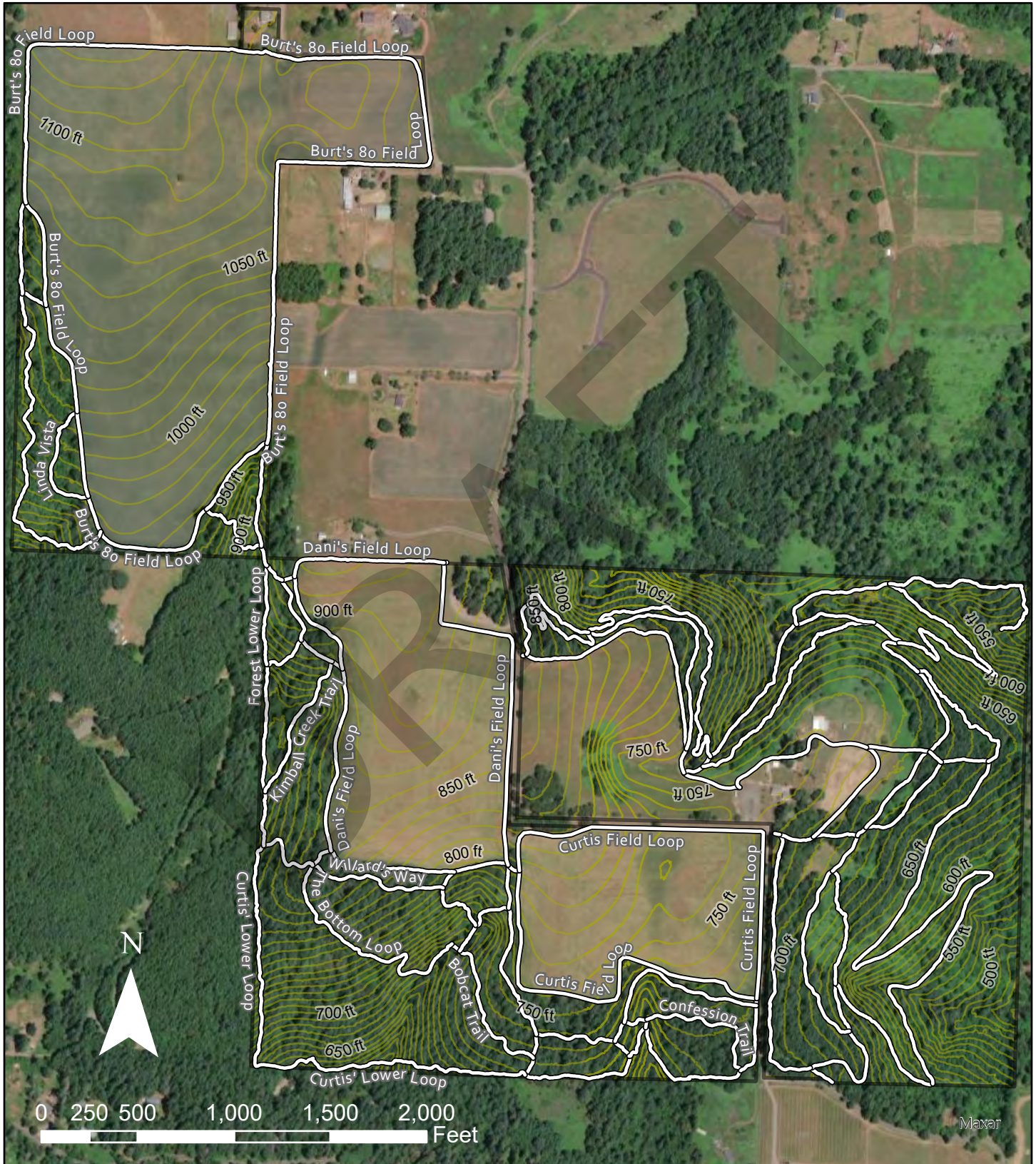
Bob and Crystal Rilee Park Trails

Trail Numbers



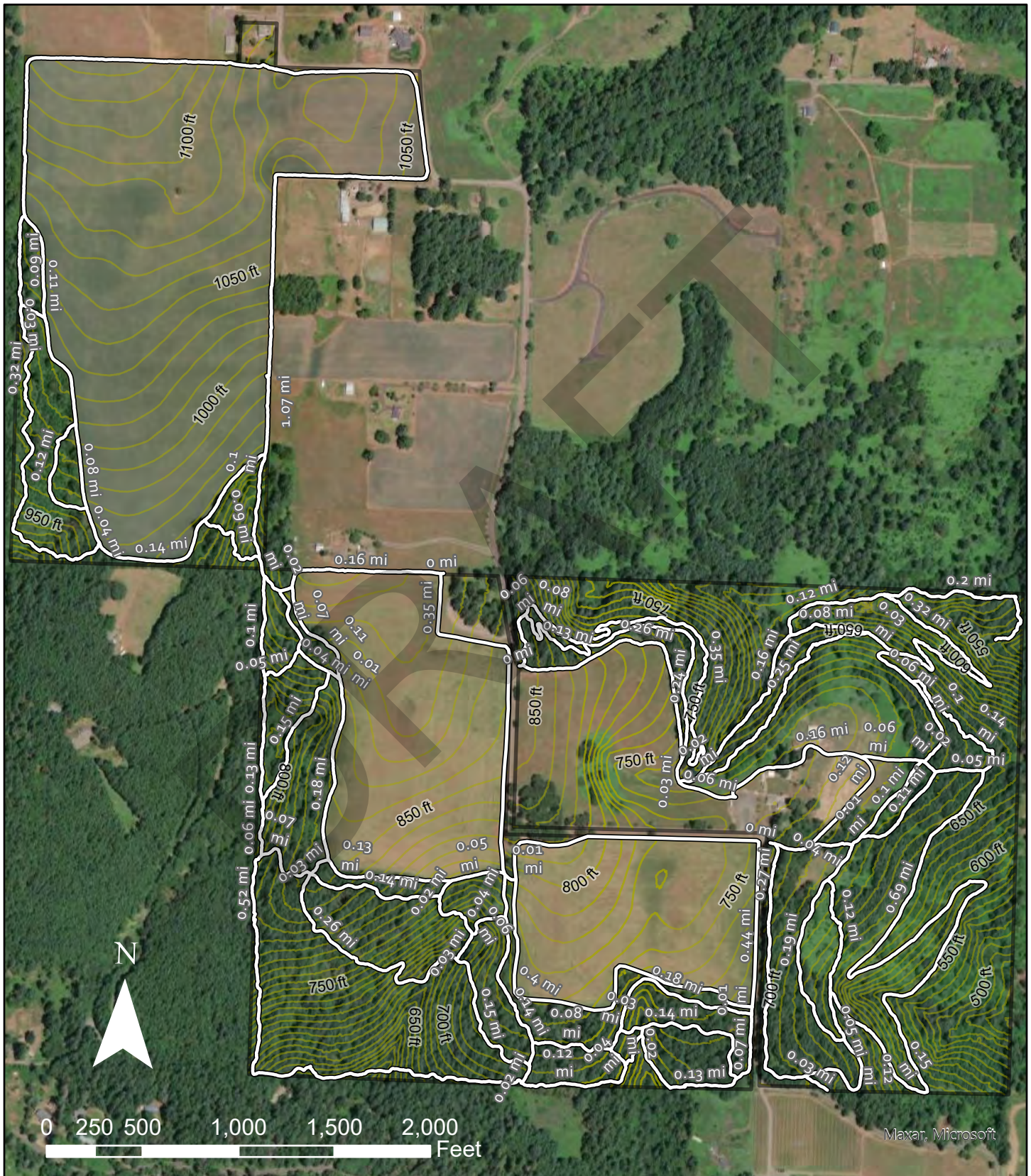
Bob and Crystal Rilee Park Trails

Trail Names



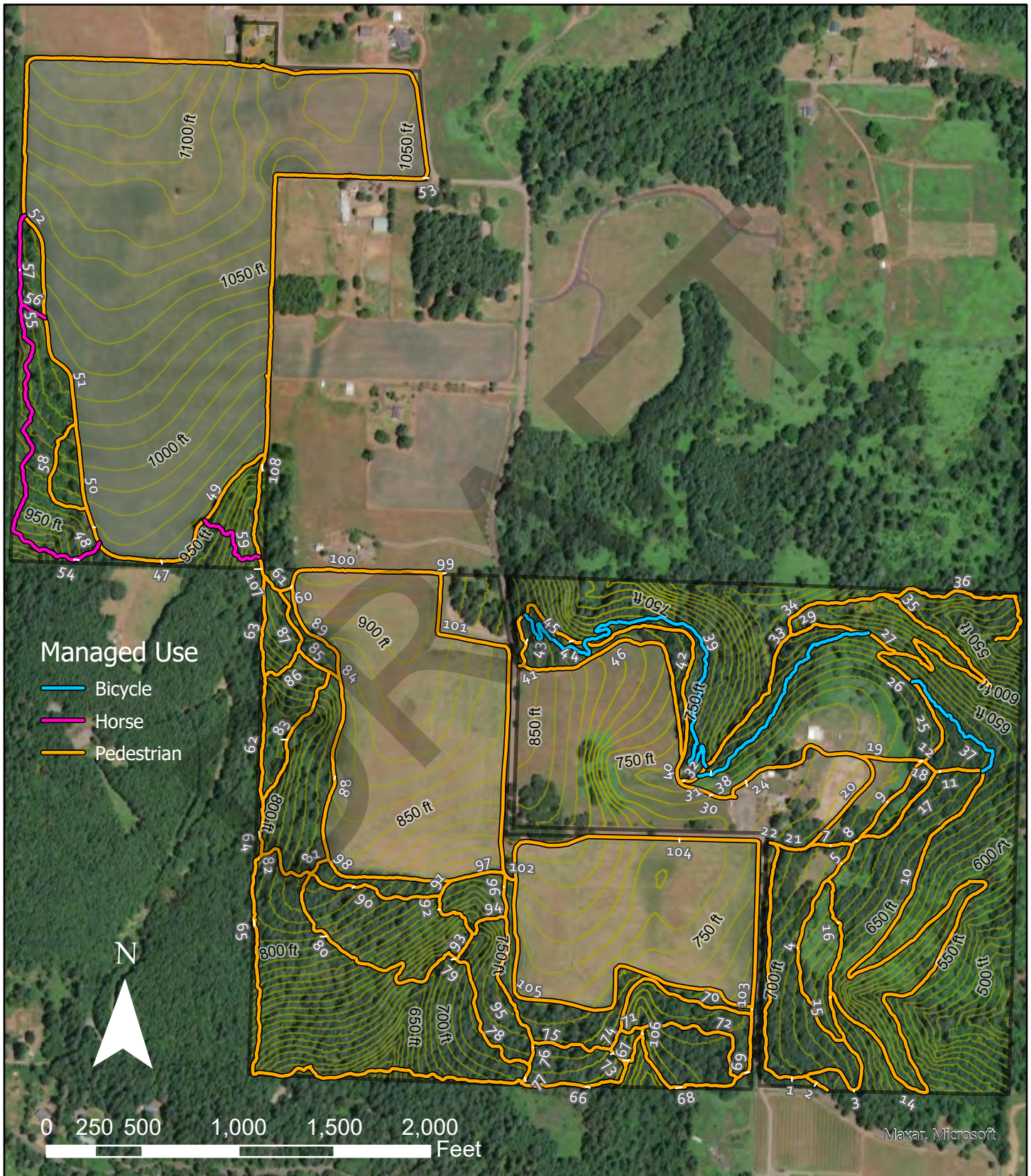
Bob and Crystal Rilee Park Trails

Trail Distances



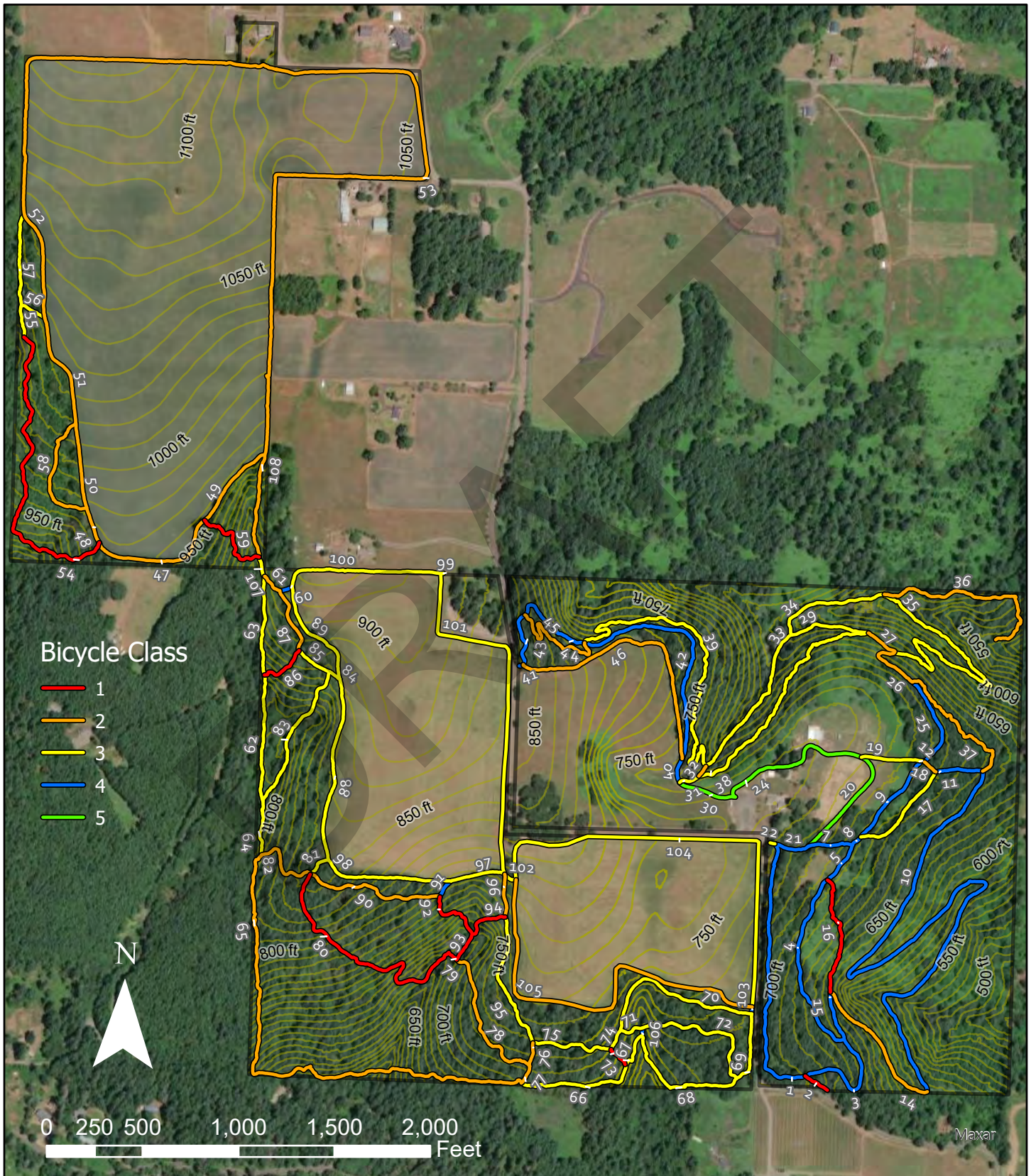
Bob and Crystal Rilee Park Trails

Managed Use (with Trail Numbers)



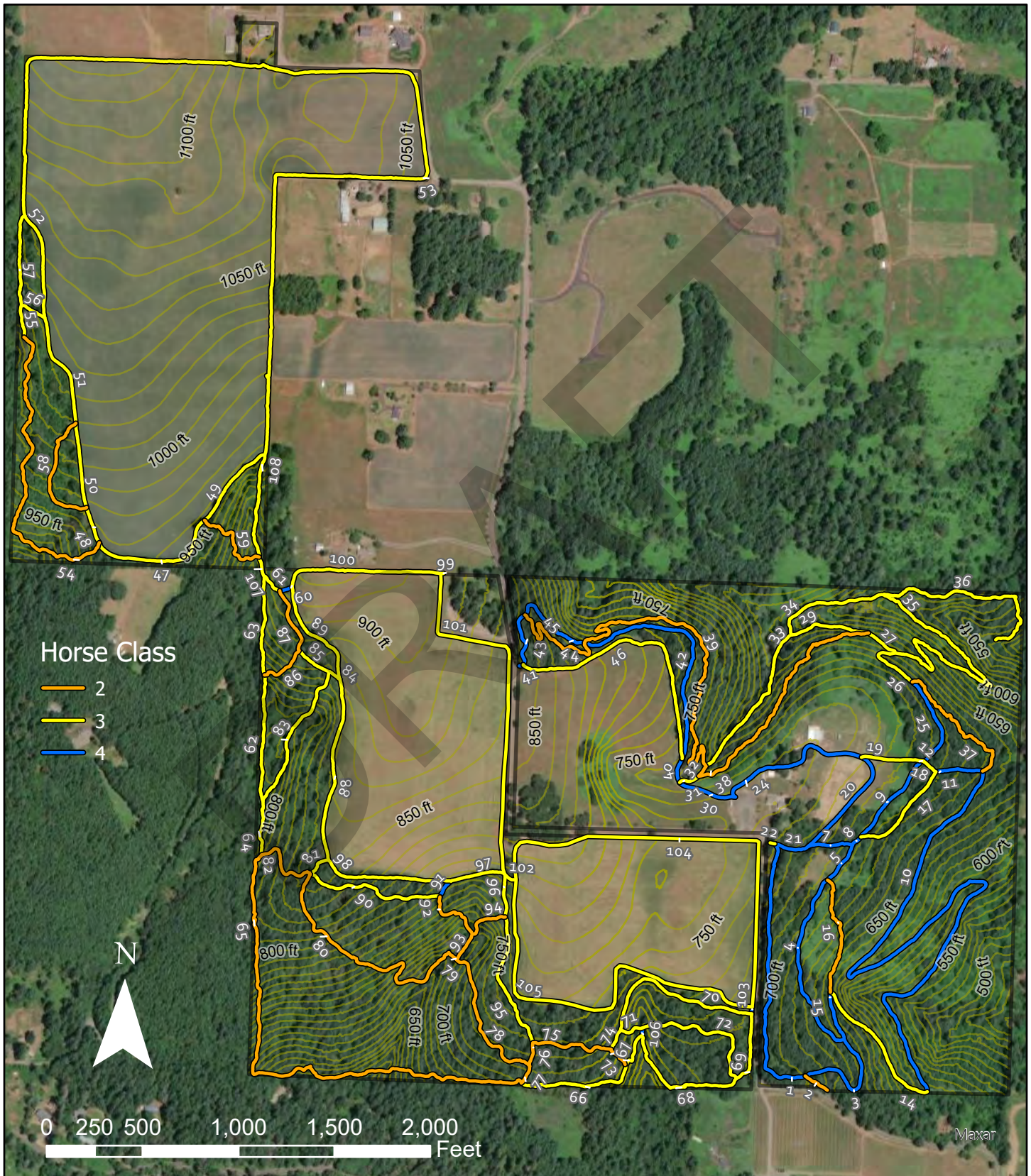
Bob and Crystal Rilee Park Trails

Bicycle Class (with Trail Numbers)



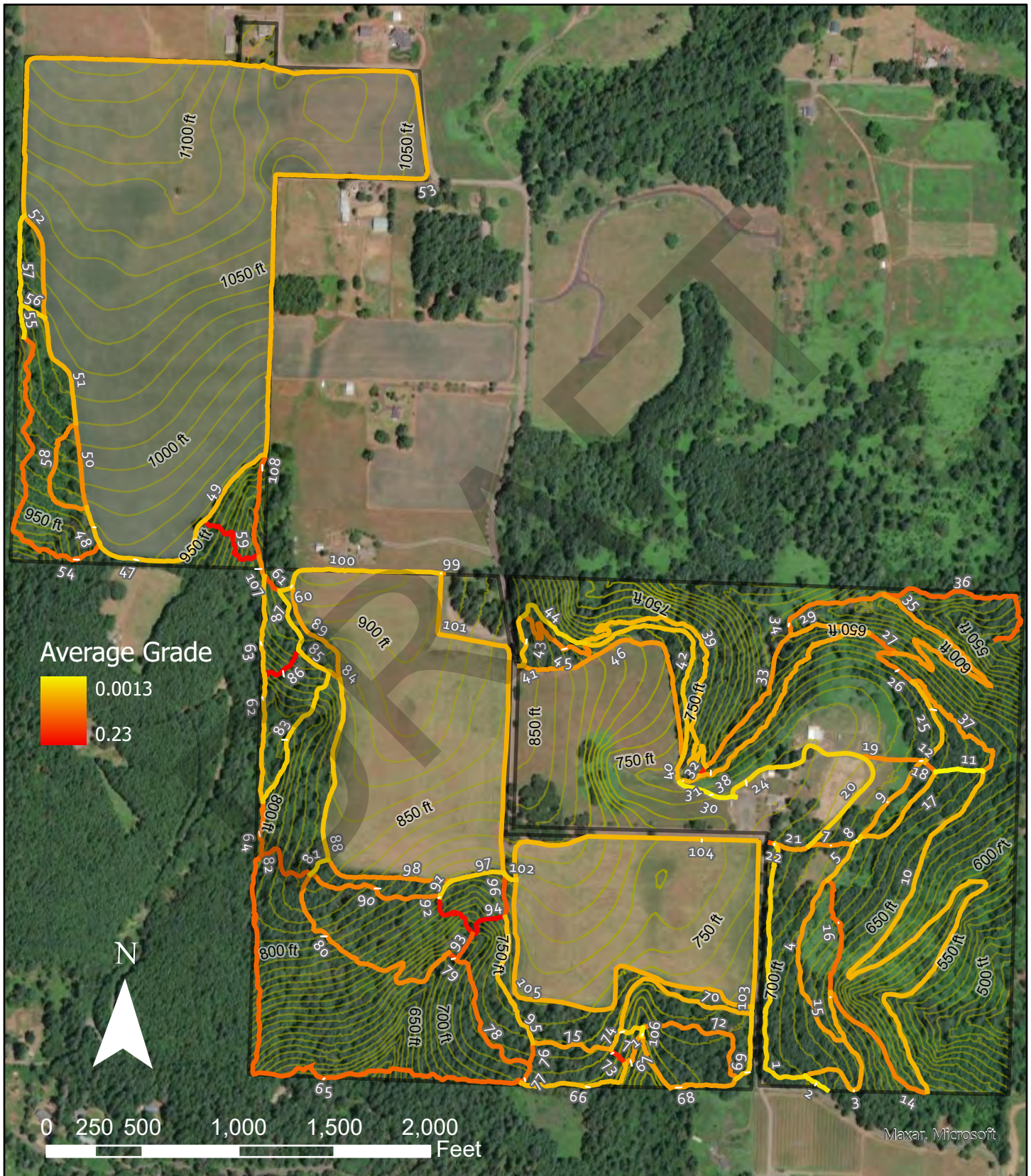
Bob and Crystal Rilee Park Trails

Horse Class (with Trail Numbers)



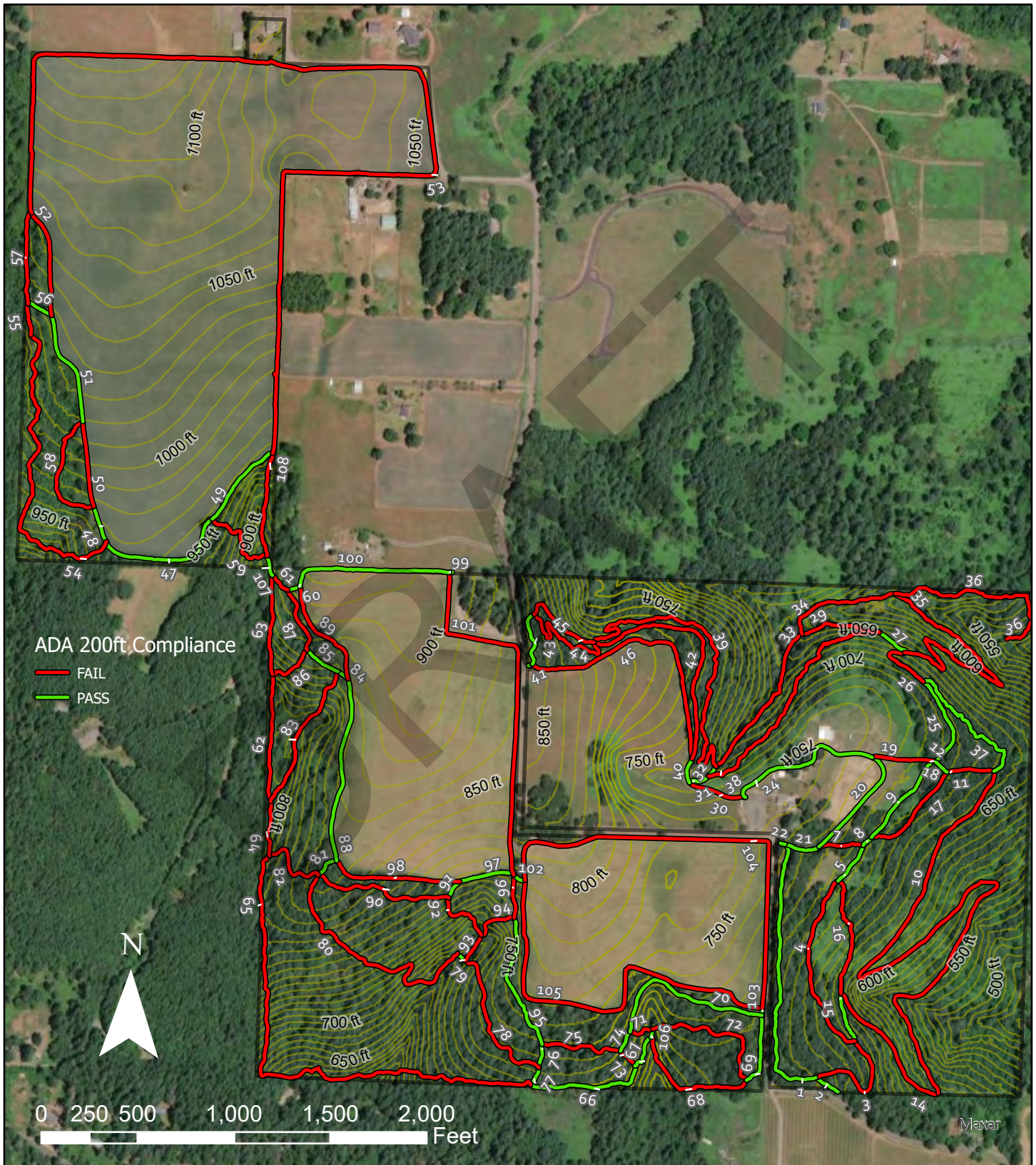
Bob and Crystal Rilee Park Trails

Average Grade (with Trail Numbers)



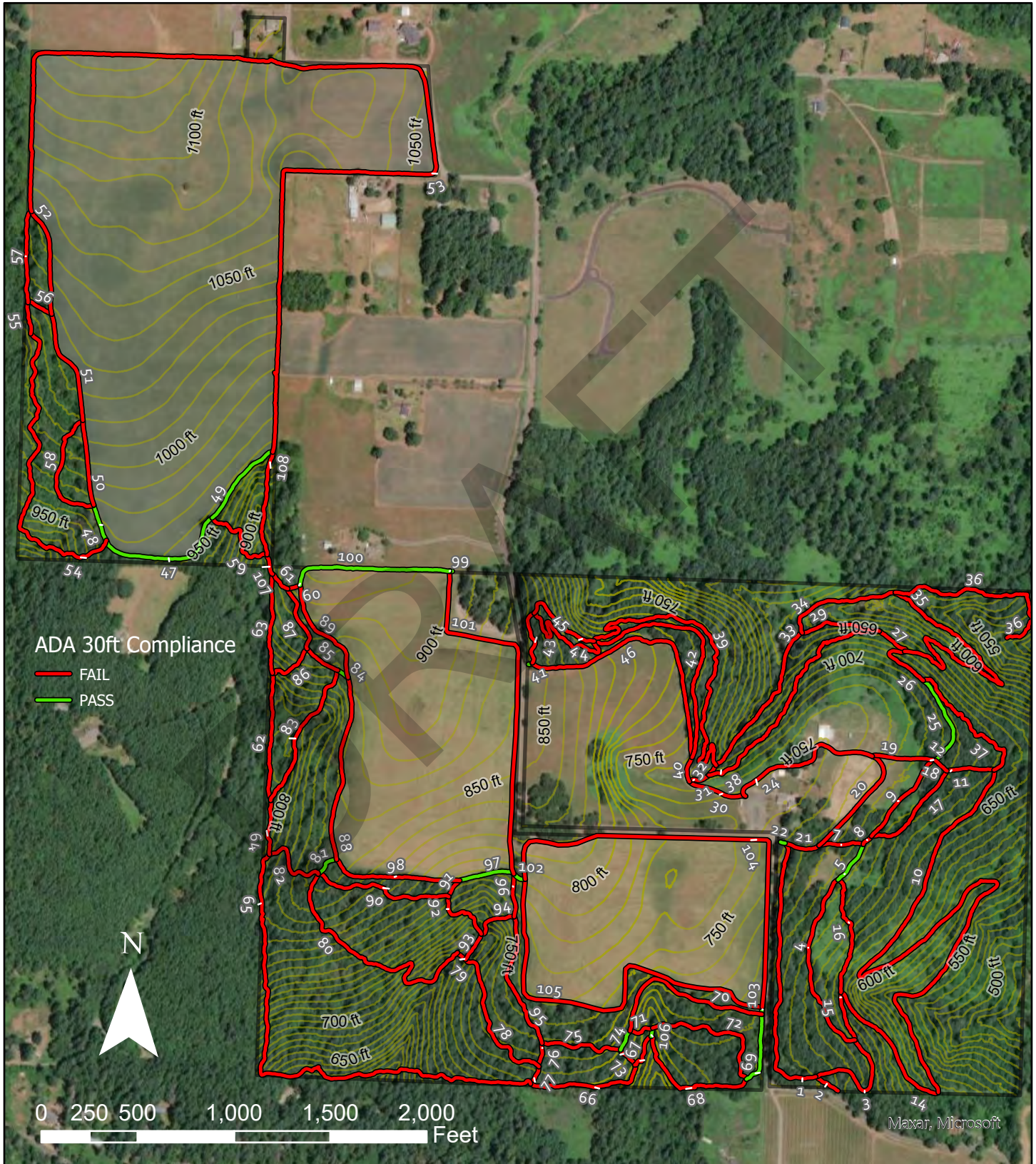
Bob and Crystal Rilee Park Trails

Americans with Disabilities Act (ADA) Compliance - 200ft Grade Recreation Trail Rule



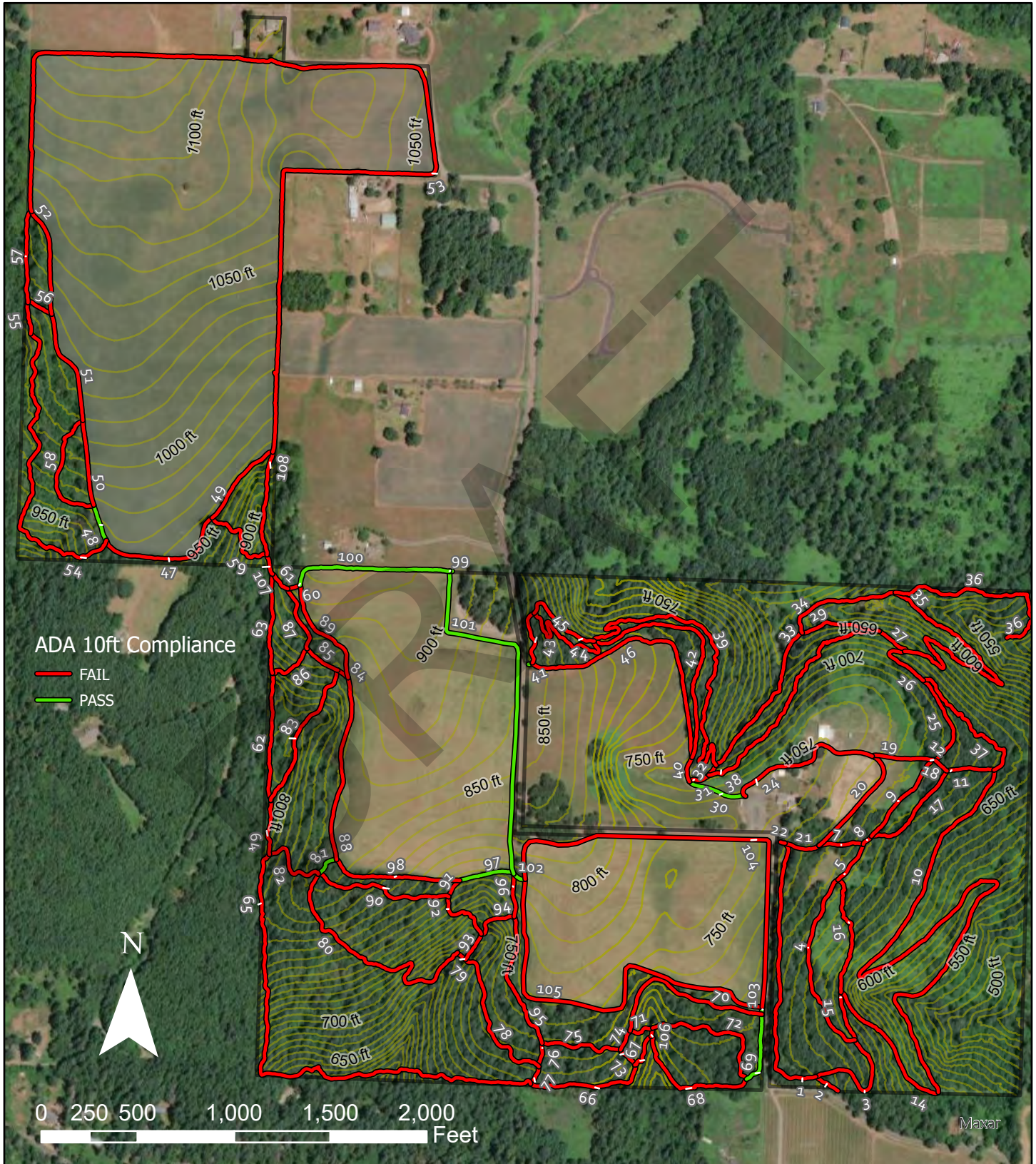
Bob and Crystal Rilee Park Trails

Americans with Disabilities Act (ADA) Compliance - 30ft Grade Recreation Trail Rule



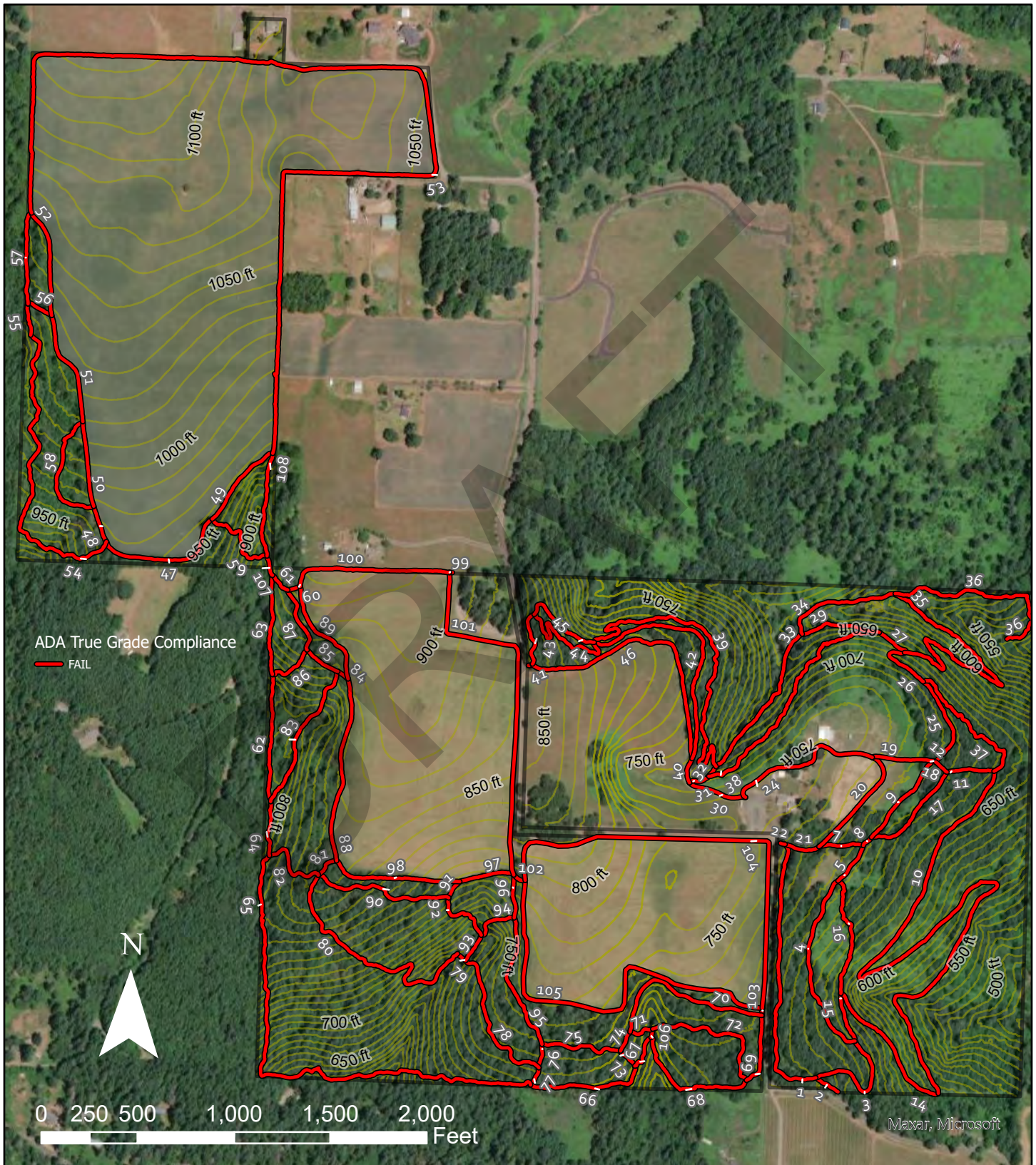
Bob and Crystal Rilee Park Trails

Americans with Disabilities Act (ADA) Compliance - 10ft Grade Recreation Trail Rule



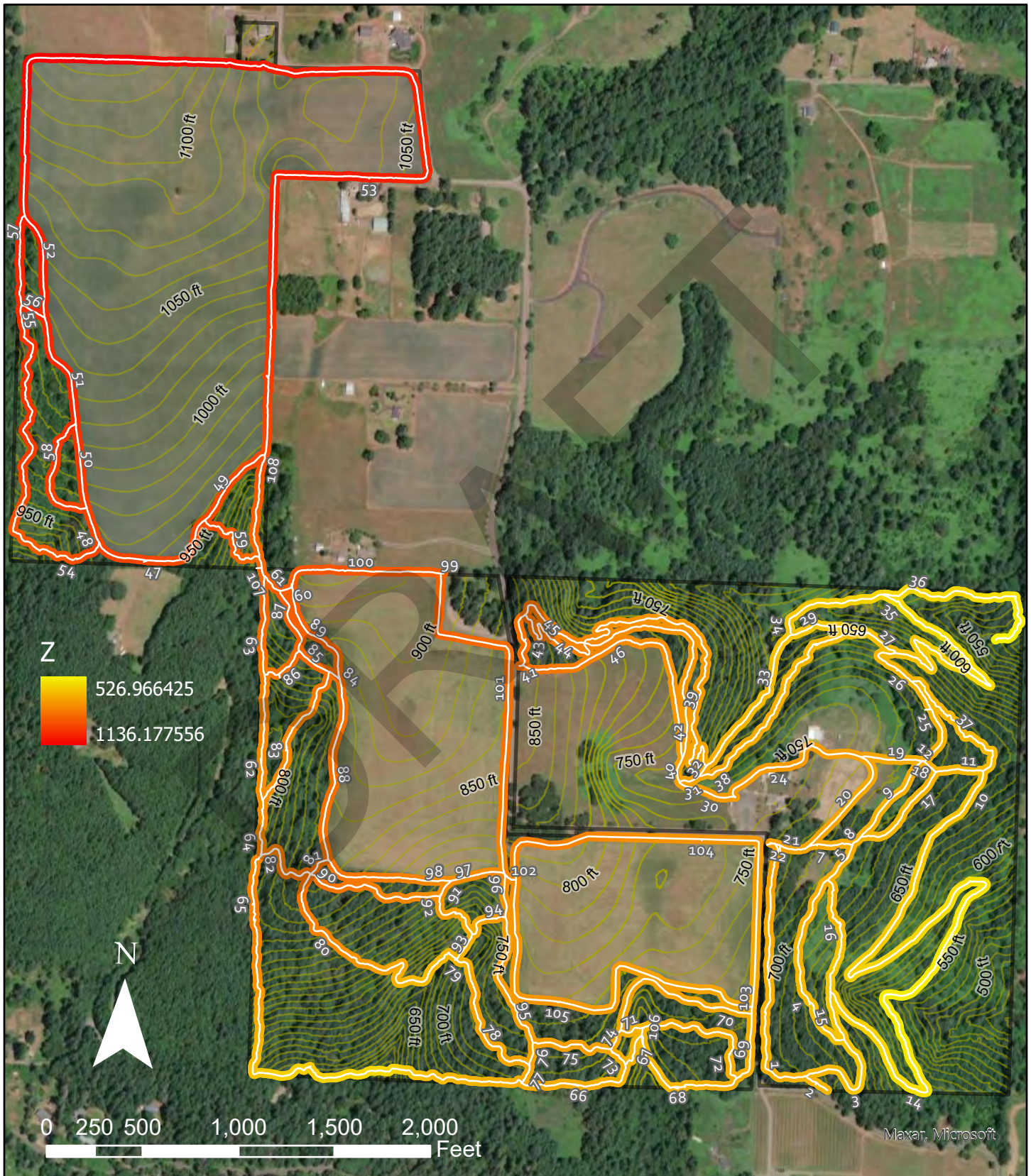
Bob and Crystal Rilee Park Trails

Americans with Disabilities Act (ADA) Compliance - True Grade Recreation Trail Rule



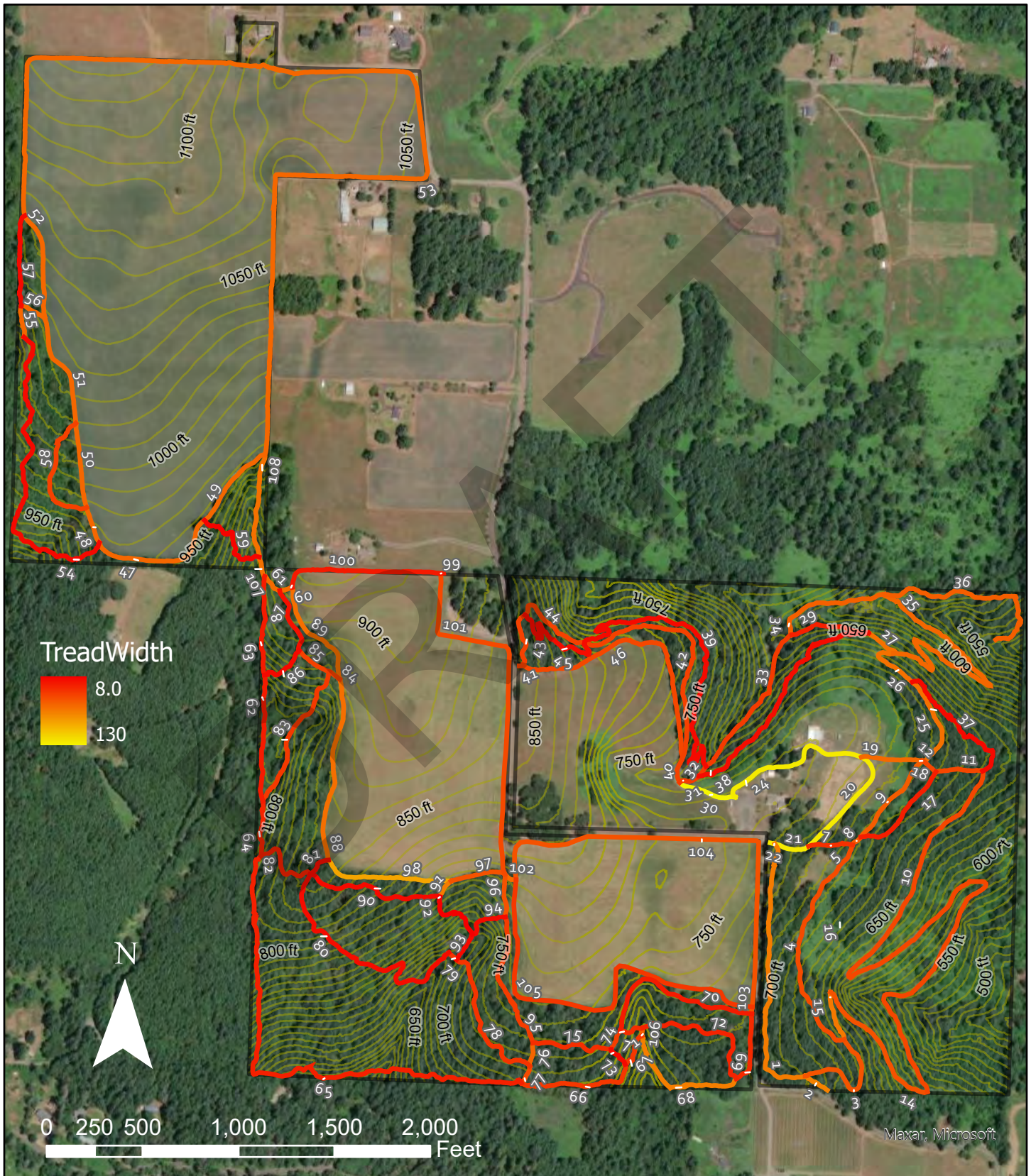
Bob and Crystal Rilee Park Trails

5-foot Interval Trail Elevation (with Trail Numbers)



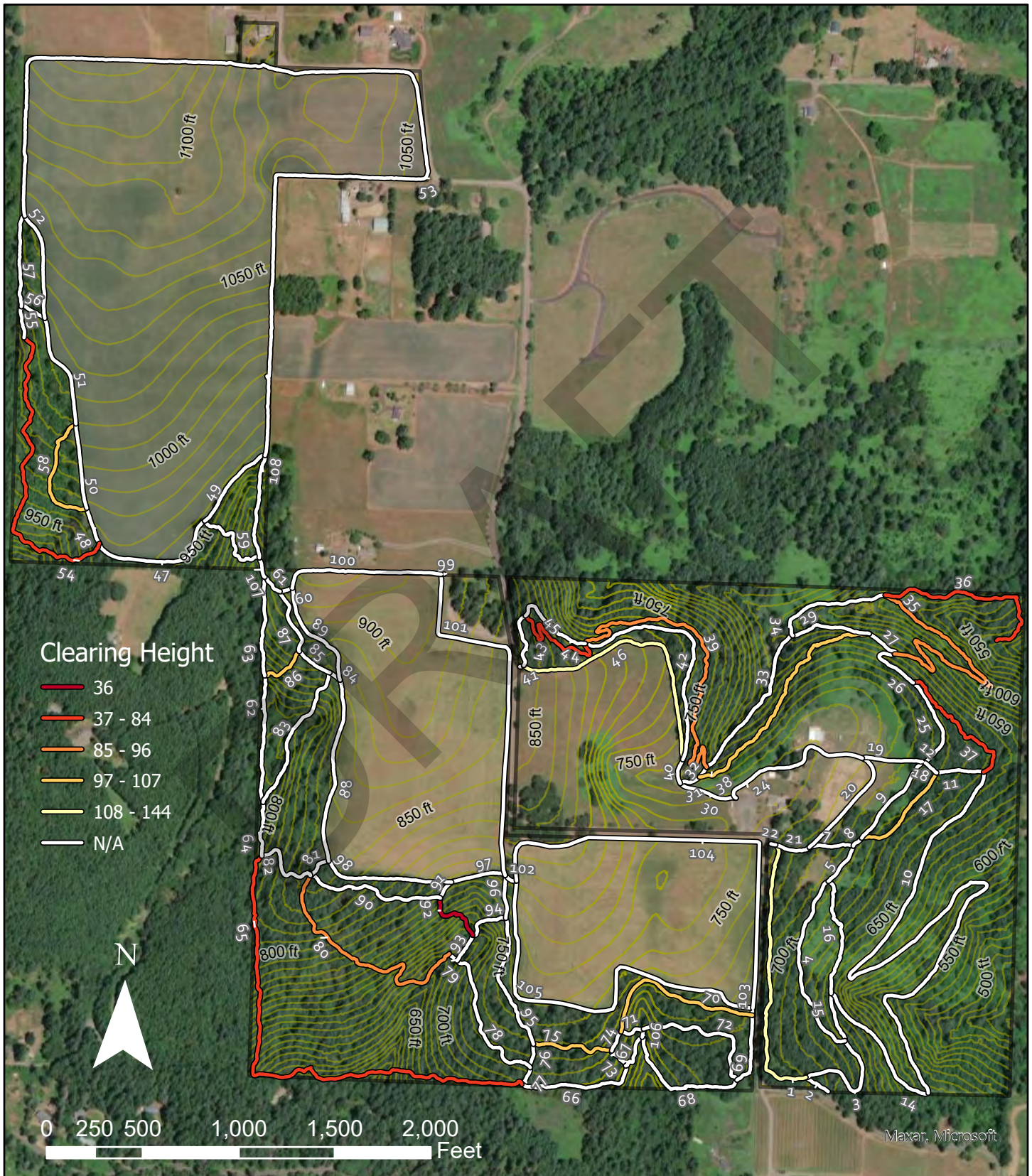
Bob and Crystal Rilee Park Trails

Tread Width (with Trail Numbers)



Bob and Crystal Rilee Park Trails

Clearing Height (with Trail Numbers)



Bob and Crystal Rilee Park Trails

Tread Surface (with Trail Numbers)

