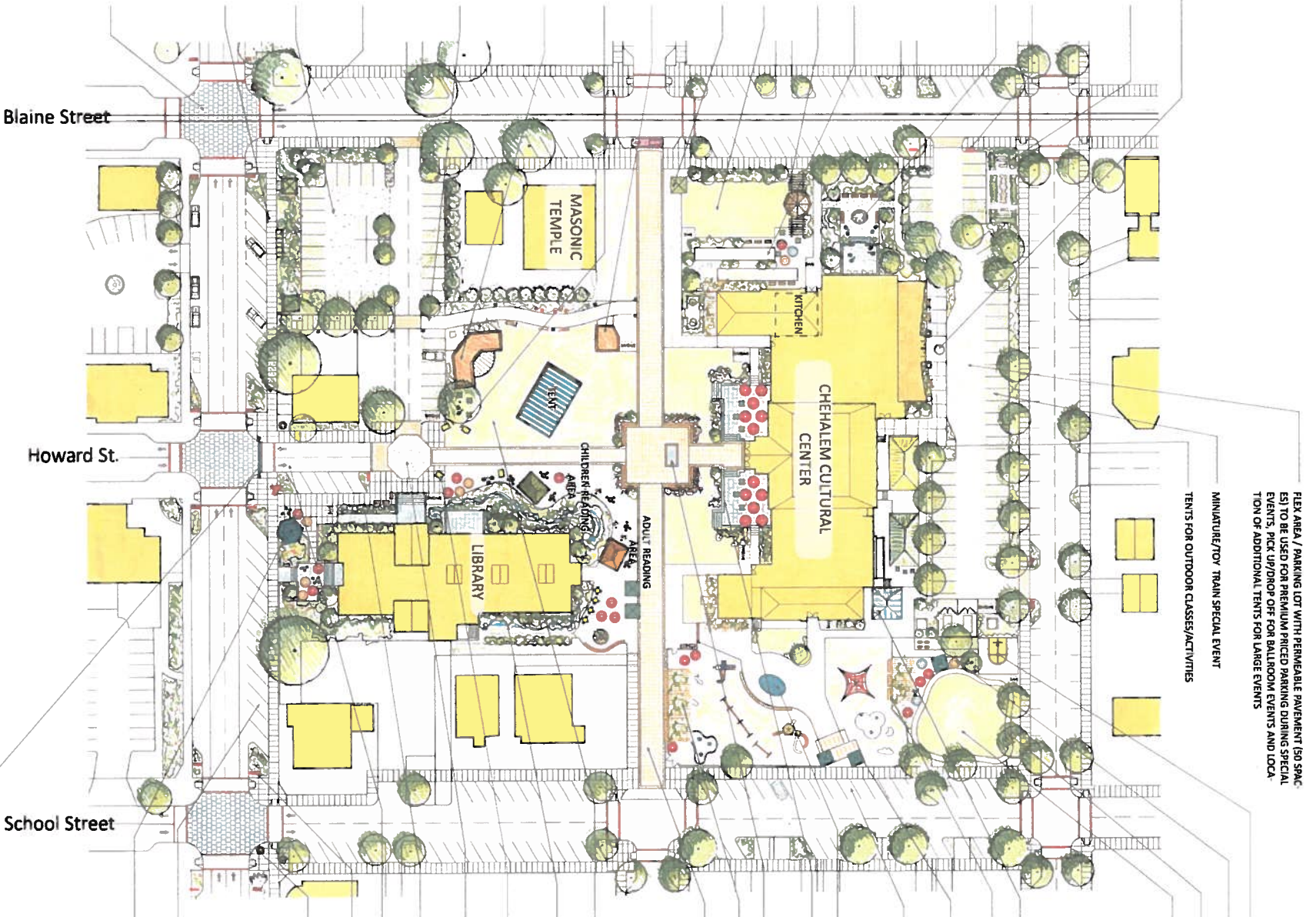


- BALLROOM DROP-OFF, WITH FOCAL POINT, MEETING SPOT
- COMMUNITY GARDEN
- PARKING SIGNAGE EXPLAINING PARKING RULES
- GARDEN AND GARDEN ANNEX: FORMAL GARDEN IN PROXIMITY OF BALLROOM AND KITCHEN FACILITIES
- UPPER TERRACE ENCLOSED WITH GLASS WALL PARTITIONS AND WITH RETRACTABLE AWNINGS TO EXTEND USE OF GARDEN. GARAGE TYPE DOORS ON THE BUILDING SO THE AREA CAN BE USED FOR PRIVATE EVENTS
- BOCCIE, CHESS, HORSESHOES AND OTHER LAWN GAMES
- WINE BAR/WINE TASTINGS OR WINE DINNERS
- CULTURAL PLAZA WEST LAWN FOR RECEPTIONS, PARTIES, OR ADDITIONAL SPACE FOR LARGE CONCERTS AND EVENTS
- WINE COUNTRY TOURS- GATHERING AND STARTING POINT WITH INFORMATION, ORIENTATION, GATHERING
- RESTROOM BUILDING AND GAME KIOSKS
- FOOD VENDORS, COFFEE CARTS, SATELLITE CARTS FOR EXISTING RESTAURANTS ON HOWARD (DURING LUNCHTIME AND MIDDAY)
- RECONFIGURED ANNEX BUILDING WITH LARGE STAGE PAD WITH ELECTRIC, ACCESS, AND RAIN PROTECTION POSSIBLE RETRACTABLE RAIN PROTECTION FOR AUDIENCE AREA
- ART PASSAGE / ALLEY TO PUBLIC PARKING WITH ENVIRONMENTAL ART FEATURES (CONTINUE RAIN GARDEN THEME, PEOPLE FRIENDLY BID-SWALES, LOCAL ART AND GARDENING DISPLAYS)
- ANGLED PARKING BETWEEN SHERMAN AND HANCOCK STREETS
- PARKING (TOTAL 42 SPACES) WITH SOME SPACES RESERVED FOR ELECTRICAL AND COMPACT CARS
- "NEWBERG CIVIC PLAZA" BUS STOP WITH BUS SHELTER, MAP AND BUS SCHEDULE. BUS STOP TO BE PARKING WHEN NOT IN USE (EXAMPLE BUS STOP DURING THE DAY AND PARKING DURING EVENTS/NIGHTTIME USES)
- DISTINCTIVE CROSSWALKS AND SPECIAL INTERSECTION PAVEMENT DESIGN TO EXTEND TO THE INTERSECTIONS AT FIRST AVENUE INDICATE THE ENTRANCE TO THE CHEHALEM CULTURAL CENTER



FLEX AREA / PARKING LOT WITH PERMEABLE PAVEMENT (50 SPACES) TO BE USED FOR PREMIUM PRICED PARKING DURING SPECIAL EVENTS, PICK UP/DROP OFF FOR BALLROOM EVENTS AND LOCATION OF ADDITIONAL TENTS FOR LARGE EVENTS

MINIATURE/TOY TRAIN SPECIAL EVENT TENTS FOR OUTDOOR CLASSES/ACTIVITIES

HALF COURT BASKETBALL COURT  
COMMUNITY ACTIVITIES AS BREAD OVEN, GAME TABLES  
BIKE LEARNER TRACK  
NEIGHBORHOOD AND FAMILY PARK WITH LARGE LAWN FOR PICK UP SOCCER GAMES, KICKBALL, ETC.

**E. Sherman Street**

OUTDOOR POTTERY CLASS SPACE WITH SHADE/COVER, KILN YARD WORK AREAS  
PERGOLA/SHELTERED PICNIC AREA OVERLOOKING PLAYGROUND  
RESTROOM BUILDING WITH SHELTERED SEATING OVERLOOKING BOTH PLAYGROUNDS, GAME KIOSK, CLIMBING WALL, STORAGE  
ANGLED PARKING ON SCHOOL AND BLAINE STREETS  
ROTAARY PARK KEEP EXISTING PLAY STRUCTURE, ADD WHERE POSSIBLE TENTS/SHELTER FOR WEATHER PROTECTION  
SPASH PAD WITH SEATING  
SYMMETRICAL RAISED TERRACES FOR MEETING AREA, OUTDOOR ART CLASSES, COFFEE SHOP WITH CAFE SEATING MOVABLE FURNITURE  
MEETING FOCAL POINT AT ART CENTER ENTRANCE  
PARENT SEATING AREA WITH LOW DECORATIVE FENCE AROUND SMALL KIDS PLAY AREA  
CLOSE SHERIDAN STREET TO VEHICULAR TRAFFIC SERVICE TRAFFIC ONLY

**Sheridan Street**

LIBRARY PLAZA / ANNEX AREA (UPPER HOWARD STREET ANNEX, ANNEX GREEN)  
LIBRARY DEMONSTRATION GARDEN  
FOOD VENDORS, COFFEE CARTS, SATELLITE CARTS FOR EXISTING RESTAURANTS ON HOWMIDDAY)  
VEHICULAR DROP OFF AT LIBRARY ENTRANCE-LIBRARY ENTRANCE ACCESS SIGN TO BE RE-DESIGNED TO INCREASE VISIBILITY  
REMOVE WALLS AROUND LIBRARY PROVIDE MOVABLE SEATING AT THE TERRACE OUTSIDE OLD LIBRARY ENTRANCE ON HANCOCK HOWARD STREET TO BE TWO WAY VEHICULAR TRAFFIC-NORTH OF THE LIBRARY ENTRANCE TO BE CLOSED TO VEHICULAR TRAFFIC  
DIRECTIONAL MAP ENTRY SIGNS INDICATING BUILDING LOCATION AND PARKING AVAILABILITY  
OUTDOOR ART, AND ART ELEMENTS

**Hancock Street**

BACK-IN ANGLED PARKING ON HANCOCK STREET  
STARTED INFORMATION KIOSK TO BE LOCATED ON THE CORNER OF HOWARD ST AND HANCOCK  
CIVIC CORRIDOR GATEWAY- ENTRY ARCH-WAY AT HOWARD STREET ENTRANCE WITH WAITING SIGNAGE, KIOSK, BANNERS

- LEGEND**
- UMBRELLAS AND CAFE SEATING
  - TENT-(RETRACTABLE)
  - KIOSK
  - PERGOLA WITH RAIN PROTECTION AND VINES
  - CROSSWALK
  - BIKE RACKS

**Parking summary:**

- 53 Parking Spaces on Blaine Street
- 56 Parking Spaces on School Street
- 28 Parking Spaces on Shermas street
- 32 Parking Spaces on Hancock Street
- 50 Parking Spaces in the North Parking lot
- 42 Parking Spaces in the south parking lot and Howards St.
- 317 Total Parking**